

Mexico

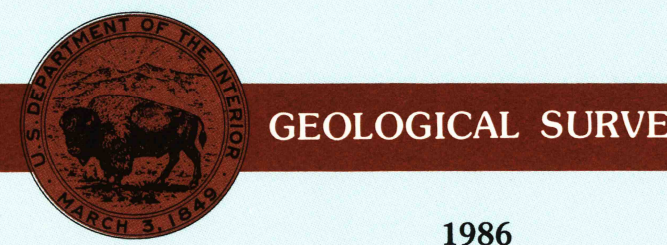
MISSOURI-ILLINOIS

1:100 000-scale
planimetric map



30 X 60 MINUTE QUADRANGLE
SHOWING

- Elevations in meters
- Highways, roads and other manmade structures
- Water features
- Woodland areas
- Geographic names



Produced by the United States Geological Survey

Compiled from USGS 1:24 000-scale topographic maps dated 1972-1978. Planimetry revised from aerial photographs taken 1984 and other source data. Revised information not field checked. Map edited 1986.

Projection and 10 000-meter grid, zone 15, Universal Transverse Mercator
25 000-foot grid ticks based on Missouri coordinate system, east and central zones
1927 North American Datum
To place on the predicted North American Datum 1983, move the projection lines 1 meter south and 12 meters east
There may be private inholdings within the boundaries of the National or State reservations shown on this map

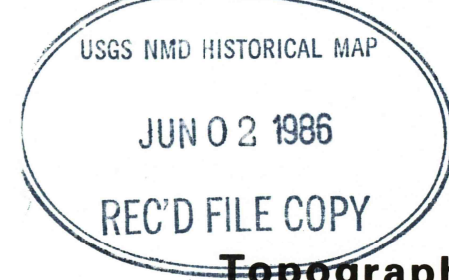
NATIONAL GEODETIC VERTICAL DATUM OF 1929

ELEVATIONS SHOWN TO THE NEAREST METER

THIS MAP COMPLIES WITH NATIONAL MAP ACCURACY STANDARDS

CONVERSION TABLE		DECLINATION DIAGRAM	ADJOINING MAPS		
Meters	Feet		1	2	3
1	3.2808		1	2	3
2	6.5617		4	5	
3	9.8425		6	7	8
4	13.1234				
5	16.4042				
6	19.6850				
7	22.9659				
8	26.2467				
9	29.5275				
10	32.8084				
To convert meters to feet multiply by 3.2808		UTM grid convergence (3N) and 1983 magnetic declination (M) at center of map. Diagram is approximate.			
To convert feet to meters multiply by 0.3048					

FOR SALE BY U.S. GEOLOGICAL SURVEY
DENVER, COLORADO 80225, OR RESTON, VIRGINIA 22092



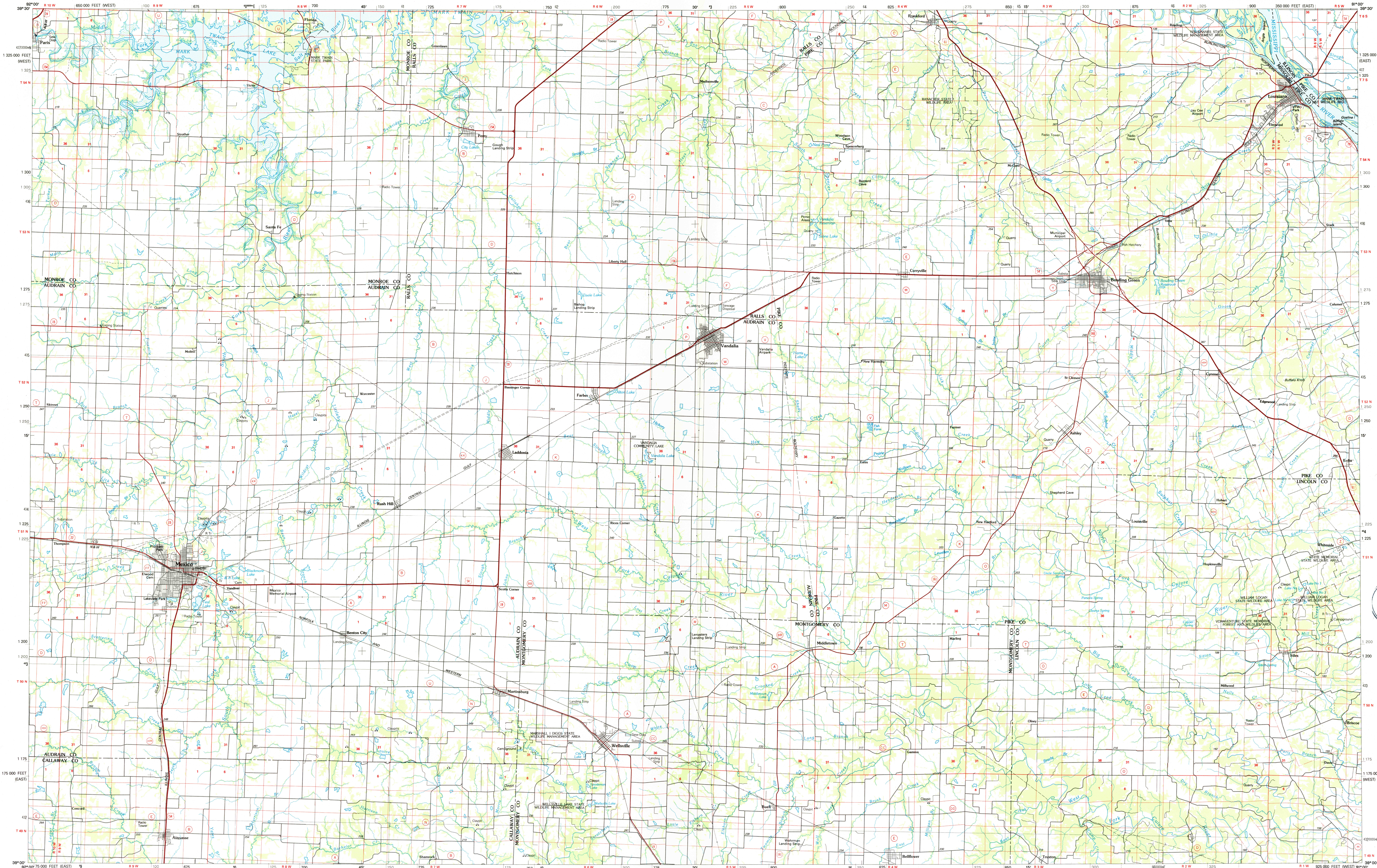
Topographic Map Symbols

Primary highway, hard surface	
Secondary highway, hard surface	
Light duty road, principal street, hard or improved surface	
Other road or street; trail	
Route marker: interstate, U.S. State	
Railroad: standard gage; narrow gage	
Bridge; overpass; underpass	
Tunnel: road; railroad	
Built up area; locality; elevation	
Airport; landing field; landing strip	
National boundary	
State boundary	
County boundary	
National or State reservation boundary	
Land grant boundary	
U.S. public lands survey: map, township, section	
Range, township, section line; protected	
Power transmission line; pipeline	
Dam; dam with lock	
Cemetery; building	
Windmill; water well; spring	
Mine shaft; adit or cave; mine; quarry; gravel pit	
Campground; picnic area; U.S. national monument	
Ruins; cliff dwelling	
Distorted surface: strip mine, lava, sand	
Contours: index; intermediate; supplementary	
Bathymetric contours: index; intermediate	
Stream, lake; perennial; intermittent	
Rapids, large and small; falls, large and small	
Area to be submerged; marsh, swamp	
Land subject to controlled inundation; woodland	
Scrub; mangrove	
Gravel; vineyard	

A pamphlet describing topographic maps is available on request

MEXICO, MISSOURI-ILLINOIS

30 X 60 MINUTE SERIES (PLANIMETRIC)



SCALE 1:100 000

1 CENTIMETER ON THE MAP REPRESENTS 1 KILOMETER ON THE GROUND

MEXICO, MISSOURI-ILLINOIS
39091-A1-PL-100

1986