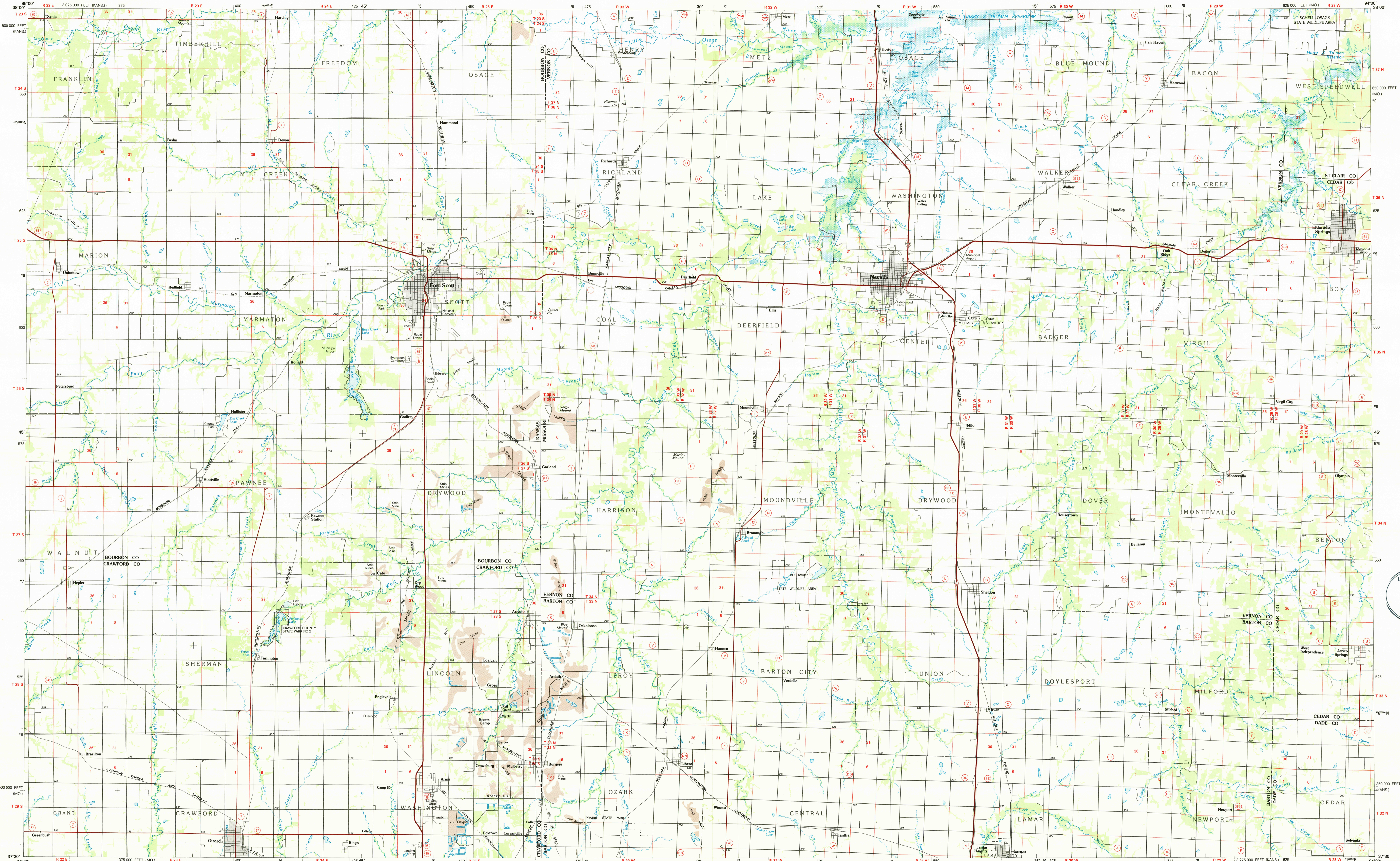


NEVADA, MISSOURI-KANSAS

30 X 60 MINUTE SERIES (PLANIMETRIC)



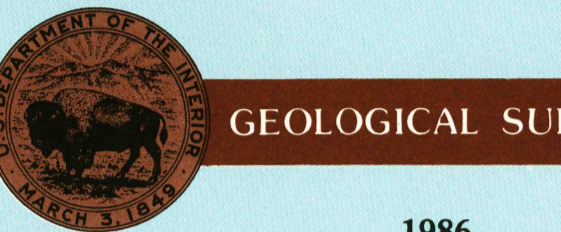
Nevada MISSOURI-KANSAS

1:100 000-scale planimetric map



30 X 60 MINUTE QUADRANGLE SHOWING

- Elevations in meters
- Highways, roads and other manmade structures
- Water features
- Woodland areas
- Geographic names



1986

Produced by the United States Geological Survey
 Compiled from USGS 1:24 000-scale topographic maps dated 1933-1978. Planimetry revised from aerial photographs taken 1981 and other source data. Revised information not field checked. Map edited 1986.
 Projection and 10 000-meter grid, zone 15 Universal Transverse Mercator. 25 000-foot grid ticks based on Missouri coordinate system, west zone and Kansas coordinate system south zone. 1927 North American Datum. To place on the predicted North American Datum 1983 move the projection lines 1 meter south and 20 meters east.
 There may be private inholdings within the boundaries of the National or State reservations shown on this map.

NATIONAL GEODETIC VERTICAL DATUM OF 1929 ELEVATIONS SHOWN TO THE NEAREST METER

THIS MAP COMPLIES WITH NATIONAL MAP ACCURACY STANDARDS

Meters	Feet
1	3.2808
2	6.5617
3	9.8425
4	13.1234
5	16.4042
6	19.6850
7	22.9659
8	26.2467
9	29.5275
10	32.8084

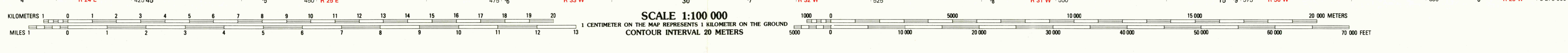
To convert meters to feet multiply by 3.2808
 To convert feet to meters multiply by 0.3048

DECLINATION DIAGRAM	ADJOINING MAPS																
	<table border="1"> <tr><td>1</td><td>Garrett</td></tr> <tr><td>2</td><td>Blaine</td></tr> <tr><td>3</td><td>Harry S. Truman</td></tr> <tr><td>4</td><td>Chambers</td></tr> <tr><td>5</td><td>Roller</td></tr> <tr><td>6</td><td>Colleville</td></tr> <tr><td>7</td><td>Spiller</td></tr> <tr><td>8</td><td>Springfield</td></tr> </table>	1	Garrett	2	Blaine	3	Harry S. Truman	4	Chambers	5	Roller	6	Colleville	7	Spiller	8	Springfield
1	Garrett																
2	Blaine																
3	Harry S. Truman																
4	Chambers																
5	Roller																
6	Colleville																
7	Spiller																
8	Springfield																

FOR SALE BY U.S. GEOLOGICAL SURVEY, DENVER, COLORADO 80225
 OR RESTON, VIRGINIA 22092
 JUN 10 1986
 REC'D FILE COPY

Topographic Map Symbols

- Primary highway, hard surface
- Secondary highway, hard surface
- Light duty road, principal street, hard or improved surface
- Other road or street, trail
- Route marker, Interstate, U. S. State
- Railroad, standard gauge, narrow gauge
- Bridges, overpass, underpass
- Tunnel, road, railroad
- Built up area, locality, elevation
- Airport, landing field, landing strip
- National boundary
- State boundary
- County boundary
- National or State reservation boundary
- Land grant boundary
- U. S. public lands survey, range, township, section
- Range, township, section line, protected
- Power transmission line, pipeline
- Dam, dam with lock
- Cemetery, building
- Windmill, water well, spring
- Mine shaft, pit or cave, mine, quarry, gravel pit
- Campground, picnic area, U. S. location monument
- Ruins, cliff dwelling
- Distorted surface, strip mine, lava, sand
- Contours: index, intermediate, supplementary
- Bathymetric contours: index, intermediate
- Stream, lake, perennial, intermittent
- Riparian, large and small, lake, large and small
- Area to be submerged, marsh, swamp
- Land subject to controlled inundation, woodland
- Scrub, mangrove
- Orchard, vineyard



NEVADA, MISSOURI-KANSAS
 37094-E1-PL-100
 1986

A pamphlet describing topographic maps is available on request