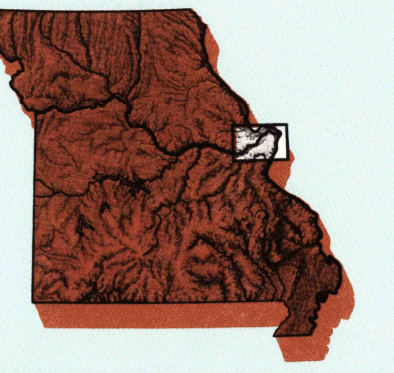


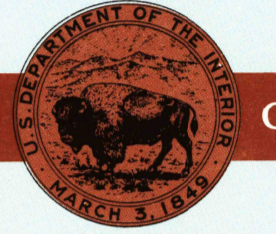
St. Louis MISSOURI-ILLINOIS

1:100 000-scale
planimetric map



30 X 60 MINUTE QUADRANGLE
SHOWING

- Elevations in meters
- Highways, roads and other manmade structures
- Water features
- Woodland areas
- Geographic names



GEOLOGICAL SURVEY

1985

Produced by the United States Geological Survey
 Compiled from USGS 1:24 000-scale topographic maps dated 1951-1982. Planimetry revised from aerial photographs taken 1982-83 and other source data. Revised information not field checked. Map edited 1985.
 Projection and 10 000-meter grid, zone 15, Universal Transverse Mercator.
 25 000-foot grid ticks based on Missouri coordinate system, east zone and Illinois coordinate system, west zone 1927 North American Datum.
 To place on the predicted North American Datum 1983, move the projection lines 2 meters south and 10 meters east.
 There may be private inholdings within the boundaries of the National or State reservations shown on this map.

NATIONAL GEODETIC VERTICAL DATUM OF 1929
ELEVATIONS SHOWN TO THE NEAREST METER

THIS MAP COMPLIES WITH NATIONAL MAP ACCURACY STANDARDS

CONVERSION TABLE		DECLINATION DIAGRAM		ADJOINING MAPS	
Meters	Feet	MAGNETIC		GRID	
1	3.2808	1985		1	2
2	6.5617	1984		3	4
3	9.8425	1983		5	6
4	13.1234	1982		7	8
5	16.4042	1981			
6	19.6850	1980			
7	22.9659	1979			
8	26.2467	1978			
9	29.5275	1977			
10	32.8084	1976			

To convert meters to feet multiply by 3.2808
 To convert feet to meters multiply by 0.3048

UTM grid convergence (10N and 18E magnetic declination 1985)
 To convert true to magnetic multiply by 0.8045
 Diagram is approximate

1	Mexico
2	Jessupville
3	Ladell
4	Fulton
5	Carlsbad Lake
6	Sullivan
7	Fowler
8	Packeyville

FOR SALE BY U.S. GEOLOGICAL SURVEY
DISTRIBUTION CENTER, 2225, OR RESTON, VIRGINIA 22092

USGS NMD HISTORICAL MAP

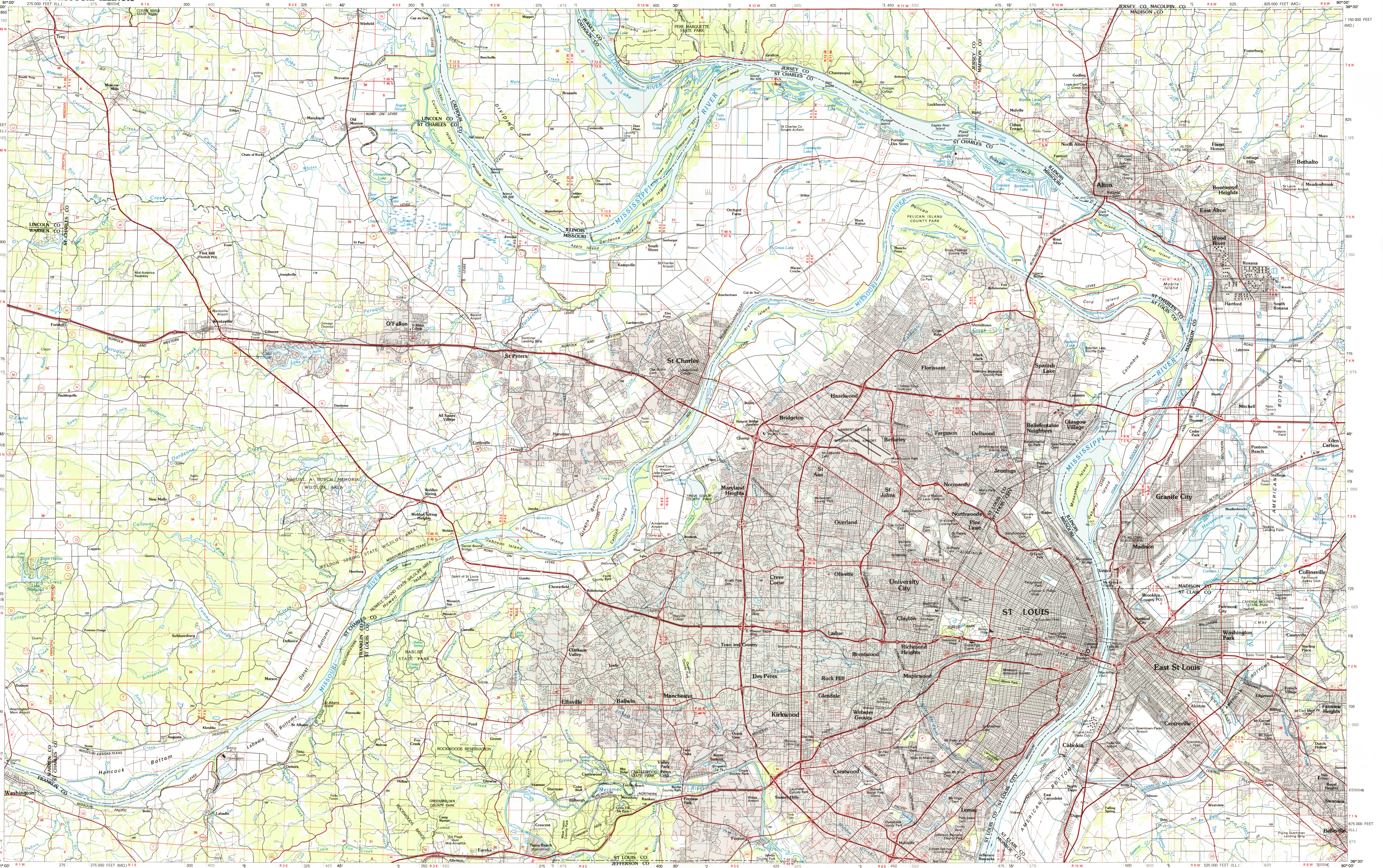
FEB 10 1986

REC'D FILE COPY

Topographic Map Symbols

- Primary highway, hard surface
- Secondary highway, hard surface
- Light duty road, gravel street, hard or improved surface
- Other road or street, trail
- Route marker: Interstate, U.S., State
- Railroad: standard gage; narrow gage
- Bridge: overpass; underpass
- Tunnel: road; railroad
- Built up area, locality, elevation
- Airport: landing field, landing strip
- National boundary
- State boundary
- County boundary
- National or State reservation boundary
- Land grant boundary
- U.S. public lands survey: range, township, section
- Range, township; section line: protracted
- Power transmission line: pipeline
- Dam: dam with lock
- Canal: holding
- Windmill; water well; spring
- Mine shaft; adit or cave; mine, quarry; gravel pit
- Canneground; picnic area; U.S. location monument
- Ruin; cliff dwelling
- Quarried surface; strip mine; lava, sand
- Contours: index, intermediate; supplementary
- Bathymetric contours: index, intermediate
- Stream, lake: perennial; intermittent
- Rapids, large and small; falls, large and small
- Area to be submerged; marsh, swamp
- Land subject to controlled inundation; woodland
- Shrub; mangrove
- Orchard; vineyard

A pamphlet describing topographic maps is available on request



SCALE 1:100 000
 1 CENTIMETER ON THE MAP REPRESENTS 1 KILOMETER ON THE GROUND

0 1 2 3 4 5 6 7 8 9 10 11 12 13 14 15 16 17 18 19 20
 KILOMETERS

0 1000 2000 3000 4000 5000 6000 7000 8000 9000 10000 15000 20000 METERS

0 1 2 3 4 5 6 7 8 9 10 11 12 13 14 15 16 17 18 19 20
 MILES

0 1000 2000 3000 4000 5000 6000 7000 8000 9000 10000 15000 20000 FEET