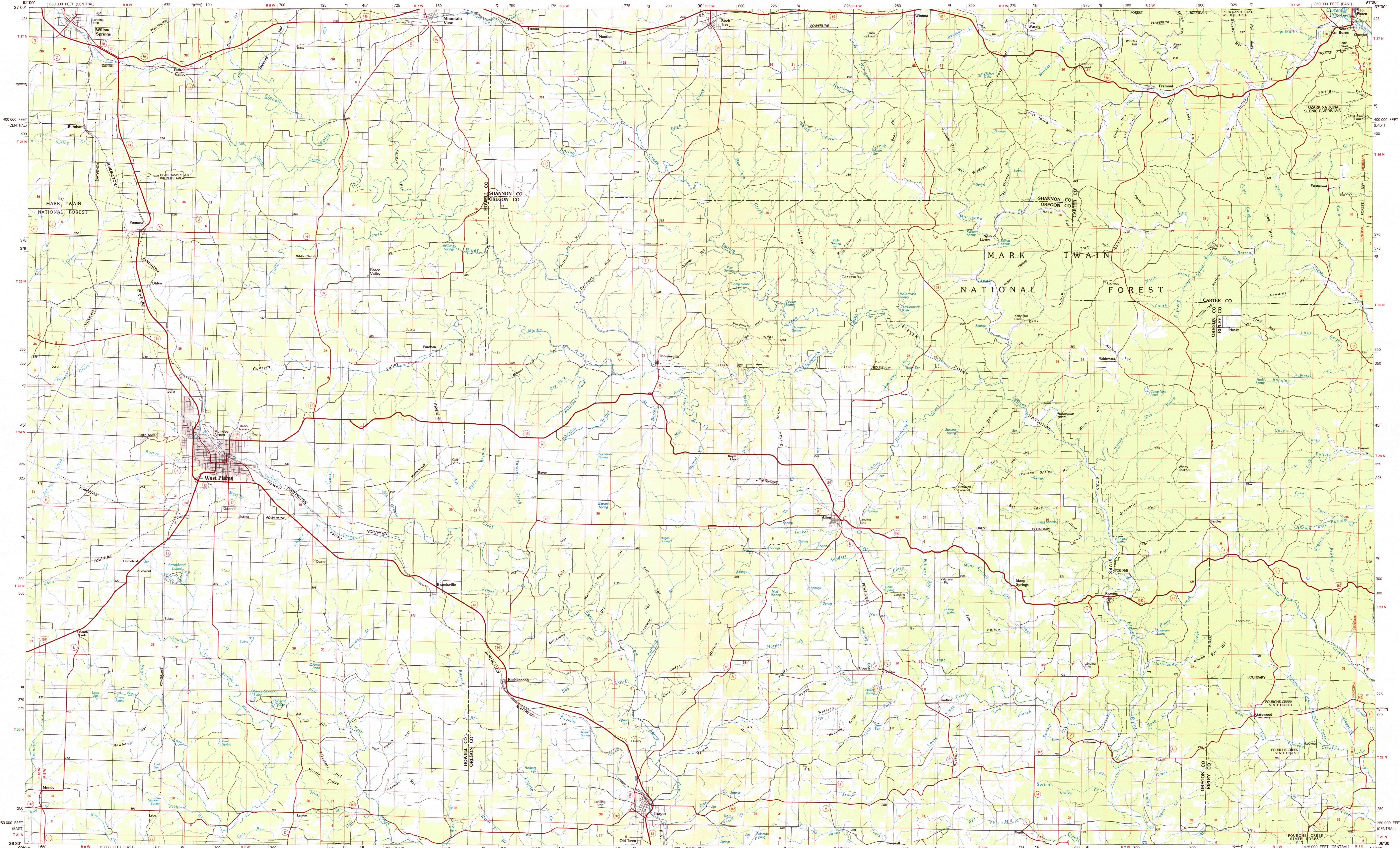


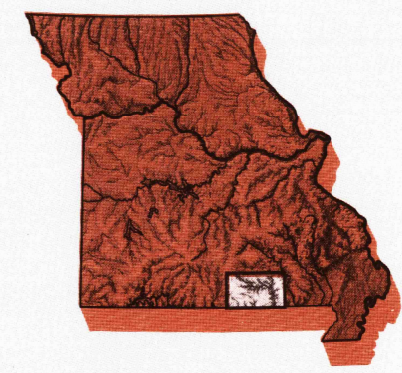
WEST PLAINS, MISSOURI

30 X 60 MINUTE SERIES (PLANIMETRIC)



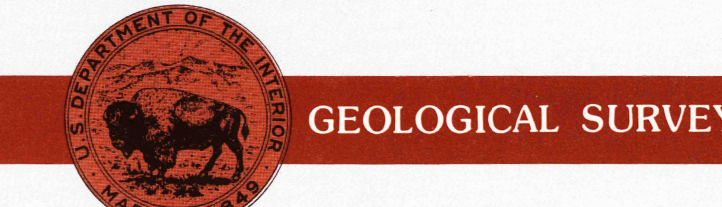
West Plains MISSOURI

1:100 000-scale metric planimetric map



30 X 60 MINUTE QUADRANGLE SHOWING

- Elevations in meters
- Highways, roads and other manmade structures
- Water features
- Woodland areas
- Geographic names



Produced by the United States Geological Survey
 Compiled from USGS 1:24 000 and 1:62 500-scale topographic maps dated 1943-1983. Planimetry revised from aerial photographs taken 1978 and other source data. Revised information not field checked. Map edited 1984.
 Projection and 10 000-meter grid, zone 15, Universal Transverse Mercator.
 25 000-foot grid ticks based on Missouri coordinate system, east zone and central zone
 1927 North American Datum
 To place on the predicted North American Datum 1983, move the projection lines 3 meters south and 12 meters east
 There may be private inholdings within the boundaries of the National or State reservations shown on this map

NATIONAL GEODETIC VERTICAL DATUM OF 1929 ELEVATIONS SHOWN TO THE NEAREST METER

THIS MAP COMPLIES WITH NATIONAL MAP ACCURACY STANDARDS

CONVERSION TABLE		DECLINATION DIAGRAM		ADJOINING MAPS	
Meters	Feet	Magnetic Declination		1	2
1	3.2808	Magnetic Declination		3	4
2	6.5617	Magnetic Declination		5	6
3	9.8425	Magnetic Declination		7	8
4	13.1234	Magnetic Declination			
5	16.4042	Magnetic Declination			
6	19.6850	Magnetic Declination			
7	22.9659	Magnetic Declination			
8	26.2467	Magnetic Declination			
9	29.5276	Magnetic Declination			
10	32.8084	Magnetic Declination			

To convert meters to feet multiply by 3.2808
 To convert feet to meters multiply by 0.3048

UTM grid convergence (EN) and 1000 magnetic declination (MD) at center of map Diagram is approximate

1	Mountain Grove
2	Spring Valley
3	Philmont
4	Ava
5	Flader Bluff
6	Roll Shoals Lake
7	Cherokee Village
8	Paragould

FOR SALE BY U.S. GEOLOGICAL SURVEY, DENVER, COLORADO 80225 OR RESTON, VIRGINIA 22092

Topographic Map Symbols

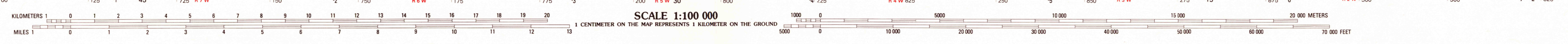
- Primary highway, hard surface
- Secondary highway, hard surface
- Light duty road, principal street, hard or improved surface
- Center road or street; walk
- Route marker: Interstate, U.S. State
- Railroad: standard gauge; narrow gauge
- Bridge: overpass; underpass
- Tunnel: road; railroad
- Built up area, locality, elevation
- Airport: landing field; landing strip
- National boundary
- State boundary
- County boundary
- National or State reservation boundary
- Land grant boundary
- U.S. public lands survey: range, township, section
- Range, township; section line: protracted
- Power transmission line; pipeline
- Dam; dam with lock
- Cemetery; building
- Wellhead; water well; spring
- Mine shaft; sid or cave; mine, quarry; gravel pit
- Campground; picnic area; U.S. location monument
- Ruins; cliff dwelling
- Distorted surface: strip mine, lava, sand
- Contours: index, intermediate, supplementary
- Bathymetric contours: index, intermediate
- Stream, lake: perennial; intermittent
- Rapids, large and small; falls, large and small
- Area to be submerged; marsh, swamp
- Land subject to controlled inundation; woodland
- Scrub; meadow
- Orchard; vineyard

A pamphlet describing topographic maps is available on request

RETURN TO: USGS AND HISTORICAL MAP ARCHIVES

WEST PLAINS, MISSOURI 36091-E1-PL-100

1984



WEST PLAINS, MISSOURI 36091-E1-PL-100