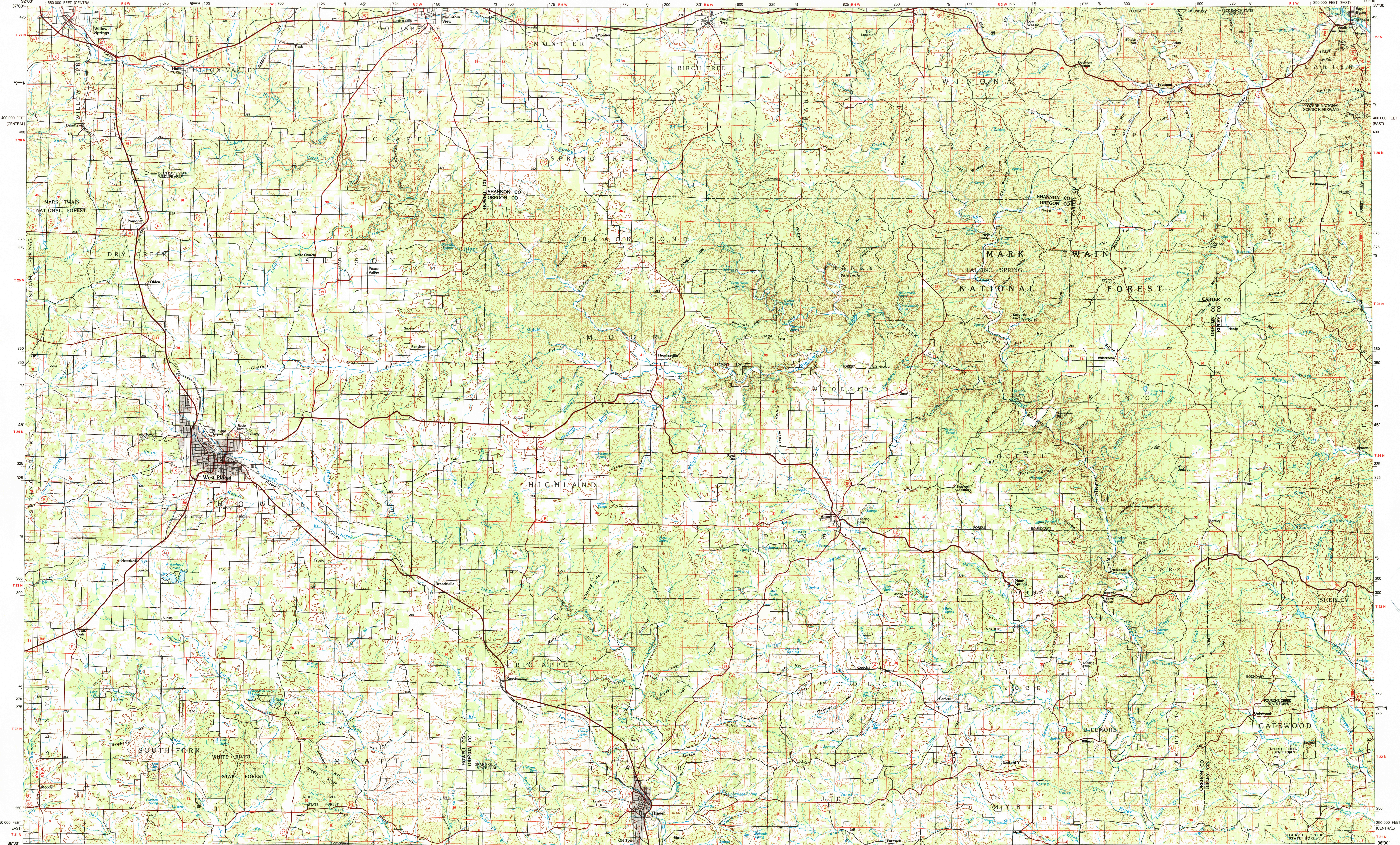


WEST PLAINS, MISSOURI

30 X 60 MINUTE SERIES (TOPOGRAPHIC)



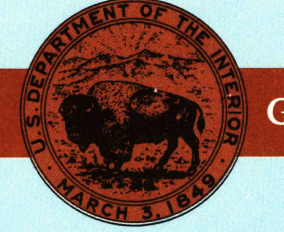
# West Plains MISSOURI

1:100 000-scale metric  
topographic map



30 X 60 MINUTE QUADRANGLE  
SHOWING

- Contours and elevations in meters
- Highways, roads and other manmade structures
- Water features
- Woodland areas
- Geographic names



GEOLOGICAL SURVEY

1984  
PHOTOINSPECTED 1985

Produced by the United States Geological Survey  
 Compiled from USGS 1:24 000 and 1:62 500-scale topographic maps dated 1943-1983. Planimetry revised from aerial photographs taken 1978 and other source data. Revised information not field checked. Map edited 1984.  
 Projection and 10 000-meter grid, zone 15, Universal Transverse Mercator  
 25 000-foot grid ticks based on Missouri coordinate system, east zone and central zone  
 1927 North American Datum  
 To place on the predicted North American Datum 1983, move the projection lines 3 meters south and 12 meters east.  
 There may be private inholdings within the boundaries of the National or State reservations shown on this map.  
 Map photostereoscopic using 1983-85 photographs  
 No major culture or drainage changes found  
 CONTOUR INTERVAL 20 METERS  
 NATIONAL GEODETIC VERTICAL DATUM OF 1929  
 ELEVATIONS SHOWN TO THE NEAREST METER

THIS MAP COMPLIES WITH NATIONAL MAP ACCURACY STANDARDS

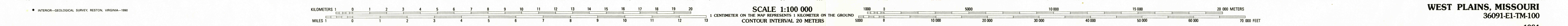
CONVERSION TABLE		DECLINATION DIAGRAM		ADJOINING MAPS		
Meters	Feet	Magnetic Declination		1	2	3
1	3.2808	Magnetic Declination		4	5	
2	6.5617	Magnetic Declination		6	7	8
3	9.8425	Magnetic Declination				
4	13.1234	Magnetic Declination				
5	16.4042	Magnetic Declination				
6	19.6850	Magnetic Declination				
7	22.9659	Magnetic Declination				
8	26.2467	Magnetic Declination				
9	29.5275	Magnetic Declination				
10	32.8084	Magnetic Declination				

FOR SALE BY U.S. GEOLOGICAL SURVEY  
DENVER, COLORADO 80225, OR RESTON, VIRGINIA 22092

SEP 10 1985  
Topographic Map Symbols

Primary highway, hard surface	Secondary highway, hard surface	Light duty road, principal street, hard or improved surface	Other road or street, trail	Route marker: interstate, U.S. State	Railroad: standard gauge, narrow gauge	Bridge: overpass, underpass	Tunnel: road, railroad	Built up area, locality, elevation	Airport: landing field, landing strip	National boundary	State boundary	County boundary	National or State reservation boundary	Land grant boundary	U.S. public lands survey: range, township, section	Range, township, section line, uncontracted	Power transmission line, pipeline	Dam: dam with lock	Cemetery: building	Well: water well, spring	Mine shaft, well or cave, mine, quarry, gravel pit	Compass: jones area, U.S. location monument	Ruins: cliff dwellings	Distorted surface: strip mine, lava, sand	Contours: index, intermediate, supplementary	Bathymetric contours: index, intermediate	Stream: lake, perennial, intermittent	Rapids, large and small, falls, large and small	Area to be submerged: marsh, swamp	Land subject to controlled inundation: woodland	Scrub, mangrove	Order: vineyard
-------------------------------	---------------------------------	---	-----------------------------	--------------------------------------	--	-----------------------------	------------------------	------------------------------------	---------------------------------------	-------------------	----------------	-----------------	--	---------------------	--	---	-----------------------------------	--------------------	--------------------	--------------------------	--	---	------------------------	---	--	---	---------------------------------------	---	------------------------------------	---	-----------------	-----------------

A pamphlet describing topographic maps is available on request



SCALE 1:100 000  
1 CENTIMETER ON THE MAP REPRESENTS 1 KILOMETER ON THE GROUND  
CONTOUR INTERVAL 20 METERS

WEST PLAINS, MISSOURI  
36091-EI-TM-100  
1984  
PHOTOINSPECTED 1985