

CAMPBELL HILL
1:62 500

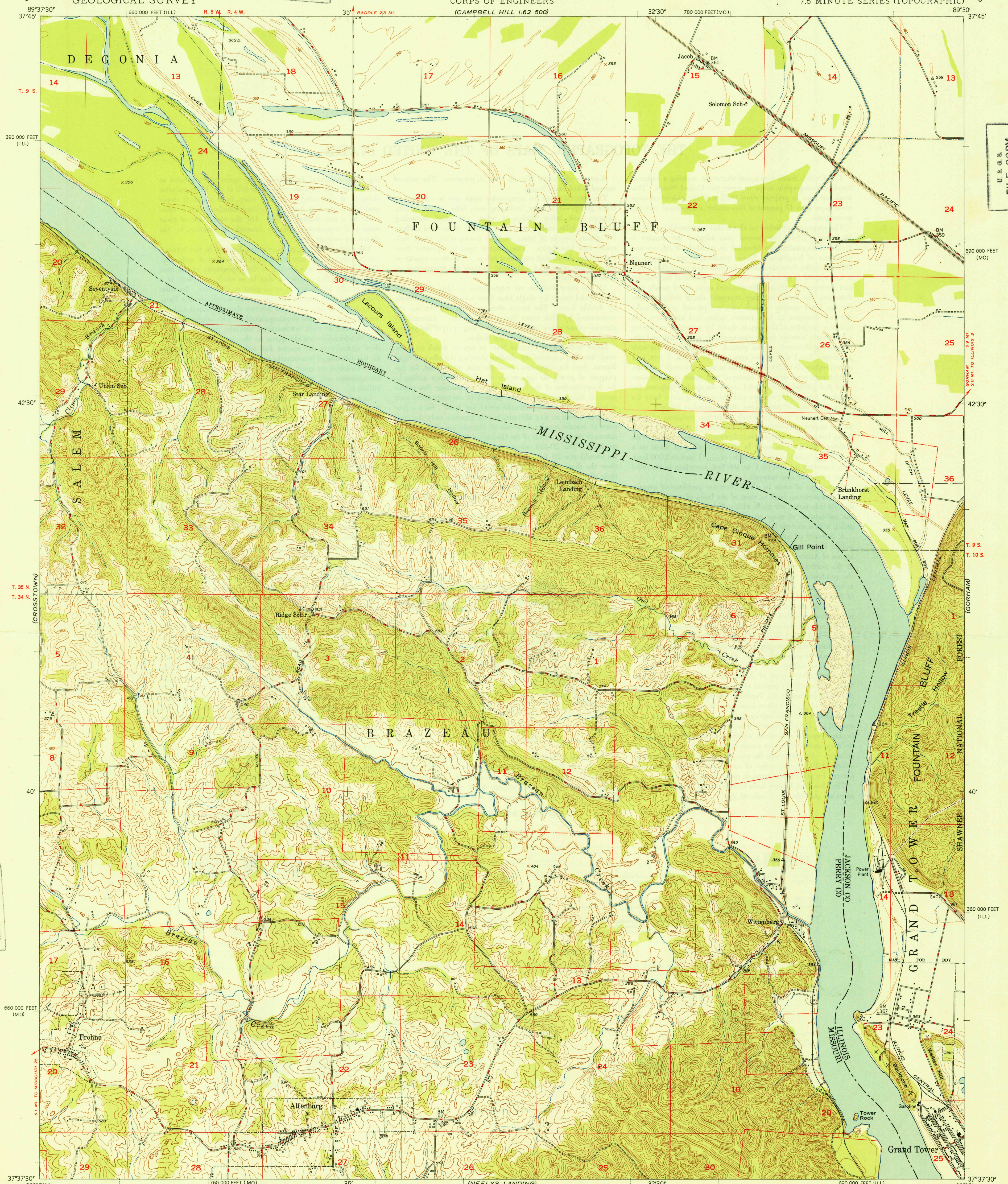
MURPHYSBORO
1:62 500

UNITED STATES
DEPARTMENT OF THE INTERIOR
GEOLOGICAL SURVEY

U. S. G. S.
FILE COPY
Inspection and Editing

UNITED STATES
DEPARTMENT OF THE ARMY
CORPS OF ENGINEERS
(CAMPBELL HILL 1:62 500)

ALTENBURG QUADRANGLE
MISSOURI-ILLINOIS
7.5 MINUTE SERIES (TOPOGRAPHIC)

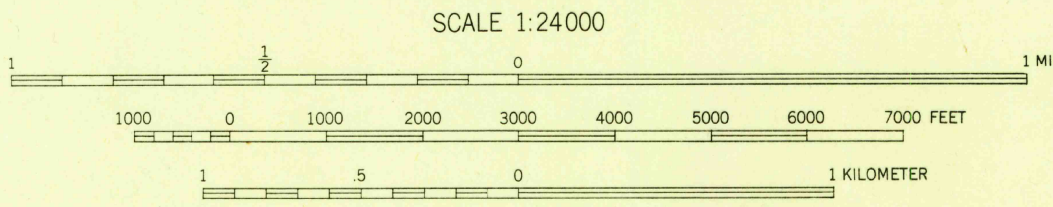


U. S. G. S.
FILE COPY
Inspection and Editing

U. S. G. S.
FILE COPY
Inspection and Editing

Maped, edited, and published by the Geological Survey
Control by Mississippi River Commission,
USED, USC&GS, and USGS
Topography from aerial photographs by multiplex methods
and by plane-table surveys 1947
Aerial photographs taken 1946
Polyconic projection, 1927 North American Datum
10,000 foot grid based on Illinois Coordinate System,
West Zone, and Missouri Coordinate System, East Zone

TRUE NORTH
MAGNETIC NORTH
APPROXIMATE MEAN
DECLINATION, 1947



CONTOUR INTERVAL 20 FEET
DASHED LINES REPRESENT HALF-INTERVAL CONTOURS
DATUM IS MEAN SEA LEVEL

THIS MAP COMPLIES WITH NATIONAL MAP ACCURACY STANDARDS
FOR SALE BY U. S. GEOLOGICAL SURVEY, WASHINGTON 25, D. C.

USGS
Historical File
Topographic Division

ROAD CLASSIFICATION
HARD-SURFACE ALL WEATHER ROADS
Heavy-duty 4 LANE 16 LANE
Medium-duty 4 LANE 16 LANE
Loose-surface or narrow hard-surface
DRY WEATHER ROADS
Improved dirt
Unimproved dirt

WOODLAND
Woods—Brushwood
Orchard

U. S. G. S.
FILE COPY
Inspection and Editing

ALTENBURG, MO.-ILL.
N3737.5—W8930.7.5
PRINTED 1948

DEC 1 1948

4245