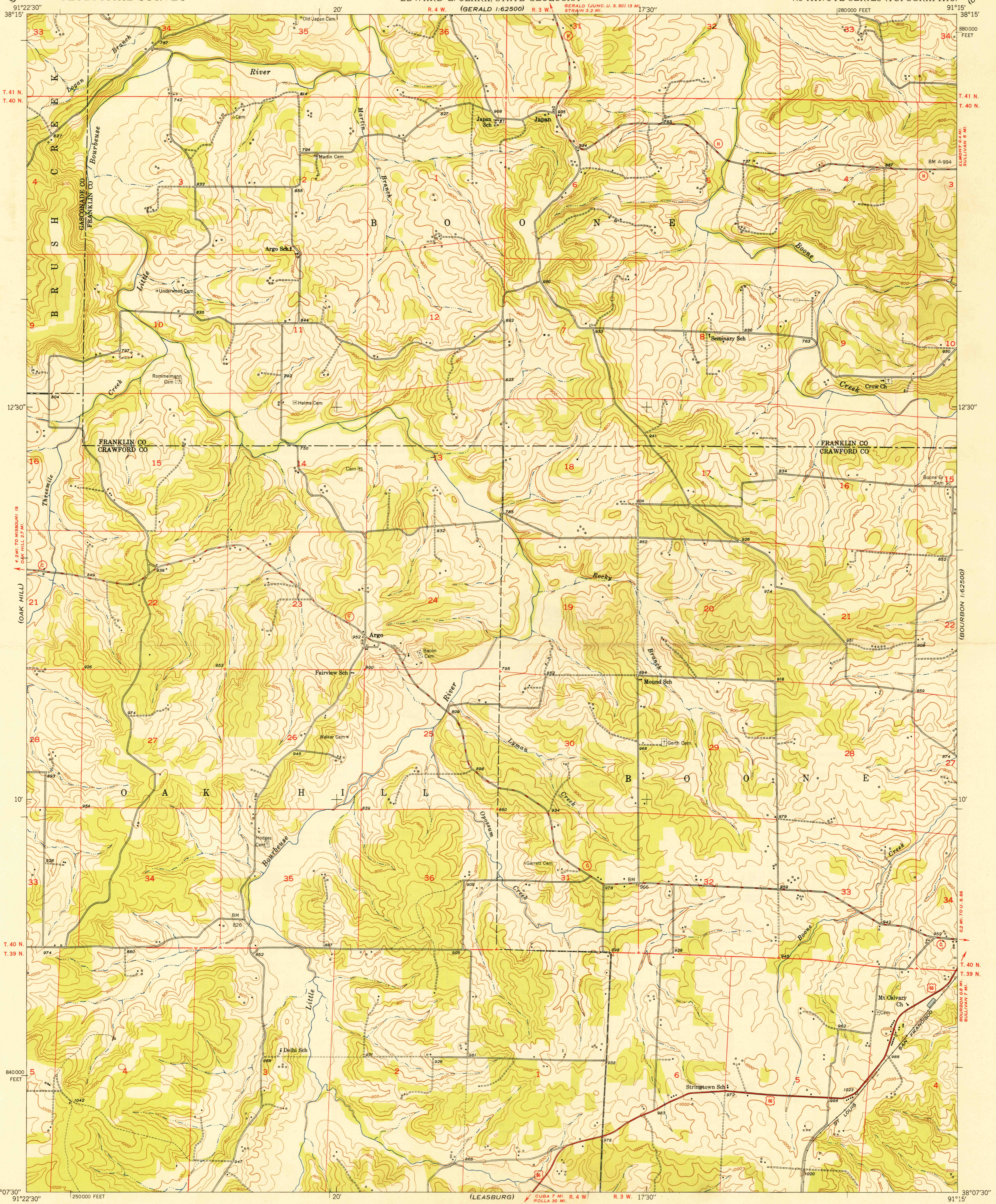


U. S. G. S.
FILE COPY
Inspection and Editing.

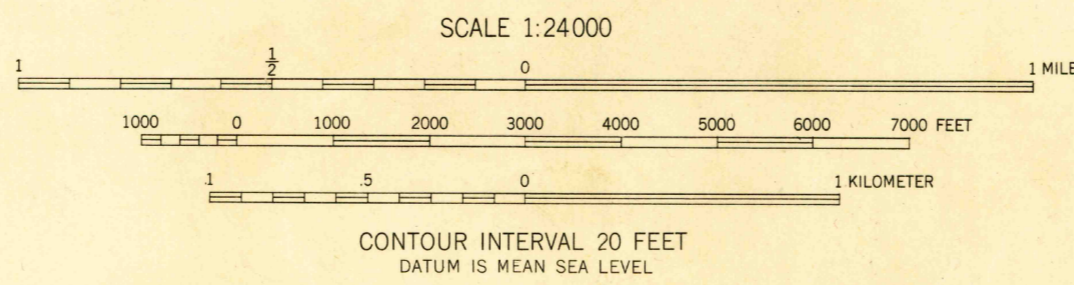


U. S. G. S.
FILE COPY
Inspection and Editing.

U. S. G. S.
FILE COPY
Inspection and Editing.

Mapped, edited, and published by the Geological Survey
Control by USGS and USC&GS
Culture and drainage in part compiled
from aerial photographs taken 1938 and 1941
Topography by plane-table methods, 1948
Polyconic projection. 1927 North American datum
10000-foot grid based on Missouri coordinate system,
east zone

TRUE NORTH
MAGNETIC NORTH
APPROXIMATE MEAN
DECLINATION, 1948



SCALE 1:24,000
CONTOUR INTERVAL 20 FEET
DATUM IS MEAN SEA LEVEL

THIS MAP COMPLIES WITH NATIONAL MAP ACCURACY STANDARDS
FOR SALE BY U. S. GEOLOGICAL SURVEY, WASHINGTON 25, D. C.

USGS
Historical File
Topographic Division

ROAD CLASSIFICATION
HARD-SURFACE ALL WEATHER ROADS DRY WEATHER ROADS
Heavy-duty — 2 LANE LANE Improved dirt
Medium-duty — 2 LANE LANE Unimproved dirt
Loose-surface, graded, or narrow hard-surface — — —
U. S. Route State Route

U. S. G. S.
FILE COPY
Inspection and Editing.

ARGO, MO.
N3807.5-W9115/7.5
PRINTED 1948

DEC 14 1948 2090