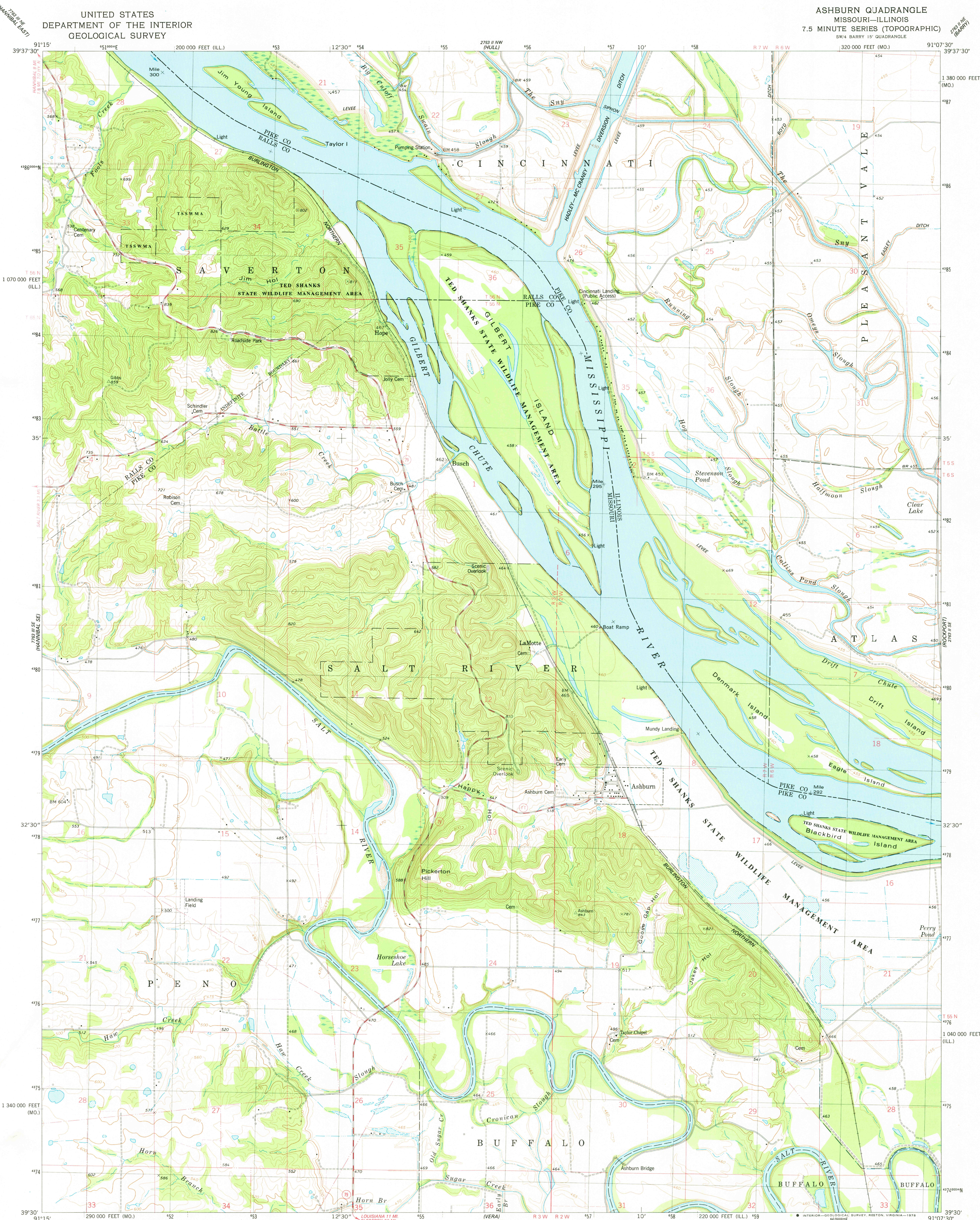


UNITED STATES
DEPARTMENT OF THE INTERIOR
GEOLOGICAL SURVEY

ASHBURN QUADRANGLE
MISSOURI-ILLINOIS
7.5 MINUTE SERIES (TOPOGRAPHIC)
SW/4 BARRY 15' QUADRANGLE



Mapped, edited, and published by the Geological Survey

Control by USGS and NOS/NOAA

Topography by photogrammetric methods from aerial photographs taken 1972 and 1974. Field checked 1975. Map edited 1978

Projection: Missouri coordinate system, east zone (transverse Mercator)

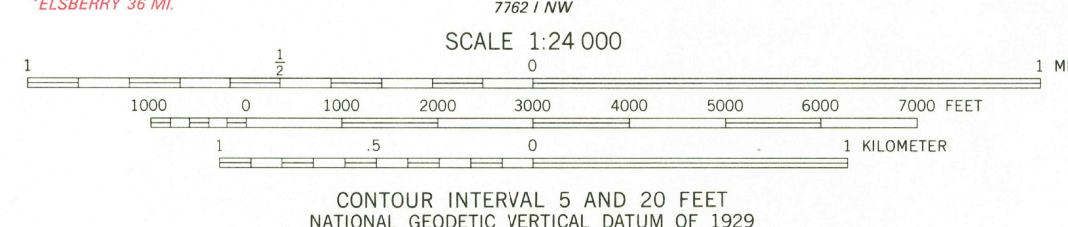
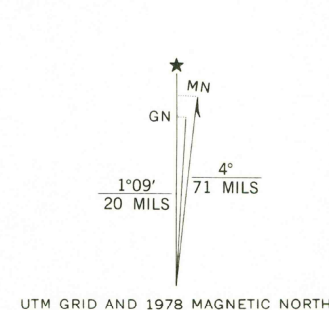
10,000-foot grid ticks based on Missouri coordinate system, east zone and Illinois coordinate system, west zone

1000-meter Universal Transverse Mercator grid, zone 15

1927 North American datum

Unidentified bounded areas in Missouri are part of the Ted Shanks State Wildlife Management Area

Fine red dashed lines indicate selected fence and field lines where generally visible on aerial photographs. This information is unchecked



THIS MAP COMPLIES WITH NATIONAL MAP ACCURACY STANDARDS
FOR SALE BY U. S. GEOLOGICAL SURVEY, DENVER, COLORADO 80225, OR RESTON, VIRGINIA 22092,
AND THE DIVISION OF RESEARCH AND TECHNICAL INFORMATION
MISSOURI DEPARTMENT OF NATURAL RESOURCES, ROLLA, MISSOURI 65401
AND STATE GEOLOGICAL SURVEY, URBANA, ILLINOIS 61801
A FOLDER DESCRIBING TOPOGRAPHIC MAPS AND SYMBOLS IS AVAILABLE ON REQUEST

ROAD CLASSIFICATION

Primary highway, hard surface	Light-duty road, hard or improved surface
Secondary highway, hard surface	Unimproved road
Interstate Route	U. S. Route
	State Route

USGS Historical File Topographic Division

ASHBURN, MO.—ILL.
SW/4 BARRY 15' QUADRANGLE
N3930—W9107.5/7.5

1978

AMS 7763 II SW—SERIES V879

DEC 18 1978