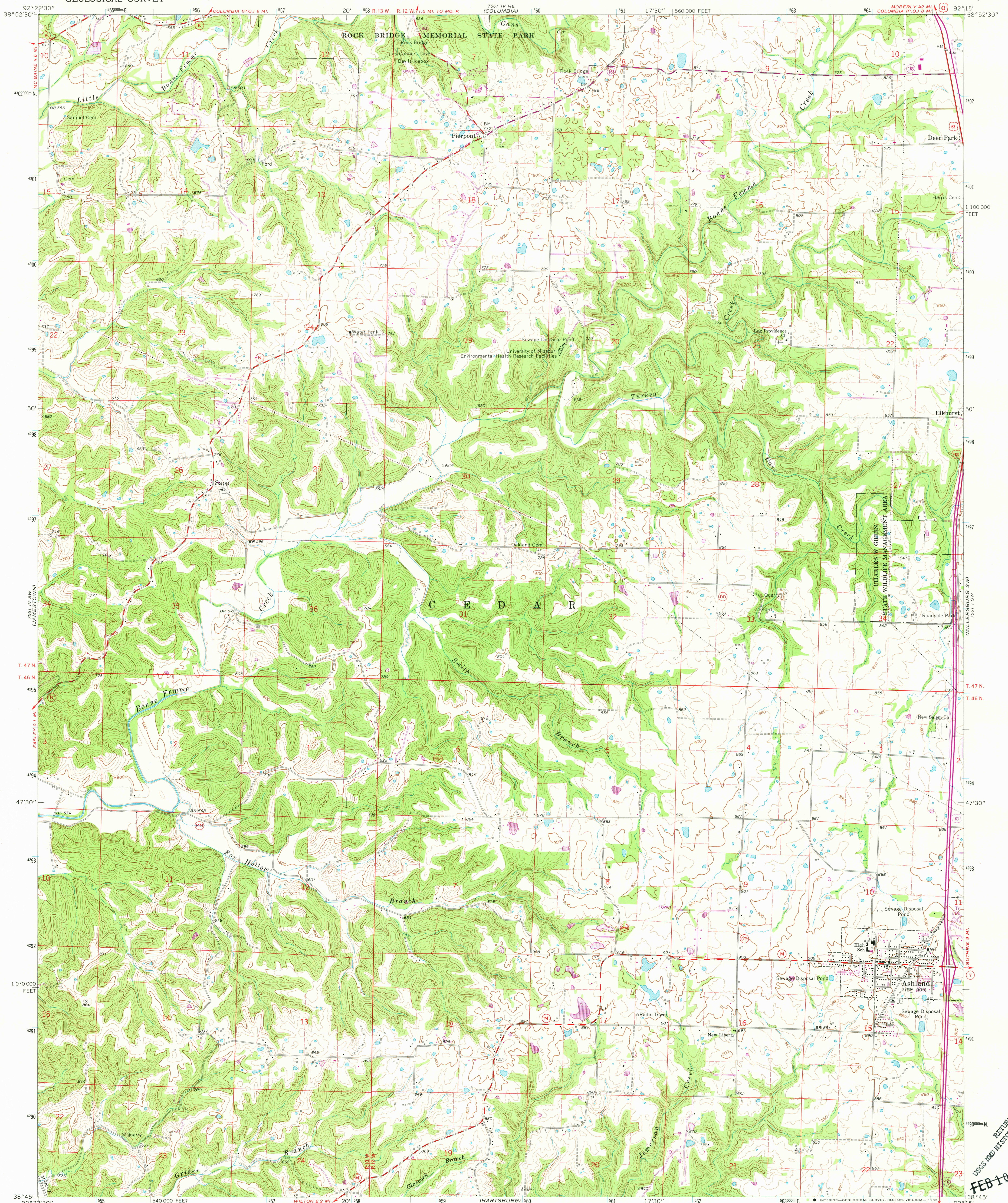


UNITED STATES  
DEPARTMENT OF THE INTERIOR  
GEOLOGICAL SURVEY

ASHLAND QUADRANGLE  
MISSOURI—BOONE CO.  
7.5 MINUTE SERIES (TOPOGRAPHIC)



Mapped, edited, and published by the Geological Survey

Control by USGS and USC&GS

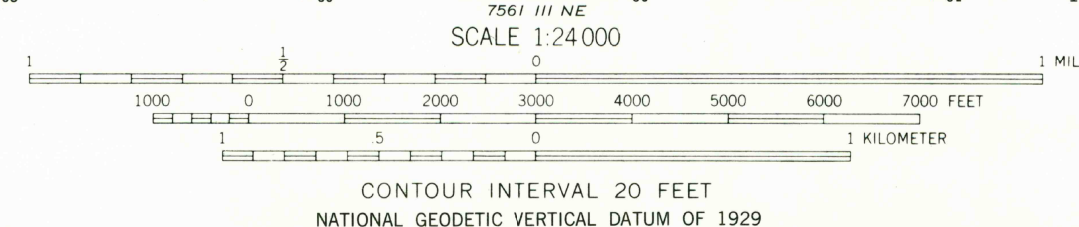
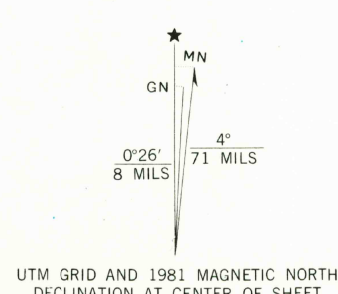
Topography by photogrammetric methods from aerial photographs taken 1967. Field checked 1969

Polyconic projection. 1927 North American datum 10,000-foot grid based on Missouri coordinate system, central zone 1000-meter Universal Transverse Mercator grid ticks, zone 15, shown in blue

Fine red dashed lines indicate selected fence and field lines where generally visible on aerial photographs. This information is unchecked

To place on the predicted North American Datum 1983 move the projection lines 1 meter south and 14 meters east as shown by dashed corner ticks

There may be private inholdings within the boundaries of the National or State reservations shown on this map



THIS MAP COMPLIES WITH NATIONAL MAP ACCURACY STANDARDS  
FOR SALE BY U. S. GEOLOGICAL SURVEY, DENVER, COLORADO 80225, OR RESTON, VIRGINIA 22092,  
AND THE DIVISION OF GEOLOGY AND LAND SURVEY  
MISSOURI DEPARTMENT OF NATURAL RESOURCES, ROLLA, MISSOURI 65401  
A FOLDER DESCRIBING TOPOGRAPHIC MAPS AND SYMBOLS IS AVAILABLE ON REQUEST

Revisions shown in purple compiled from aerial photographs taken 1980. Map edited 1981  
This information not field checked



QUADRANGLE LOCATION

Primary highway, all weather, hard surface  
Secondary highway, all weather, hard surface  
U. S. Route  
Light-duty road, all weather, improved surface  
Unimproved road, fair or dry weather  
State Route

ASHLAND, MO.

N3845—W9215/7.5

1969  
PHOTO-REVISED 1981  
DMA 7561 IV SE—SERIES W879

RETURN TO:  
1935 MOD HISTORICAL MAP ARCHIVES  
FEB 10 1982  
JEFFERSON CITY, MO

FEB 11 1982

2400