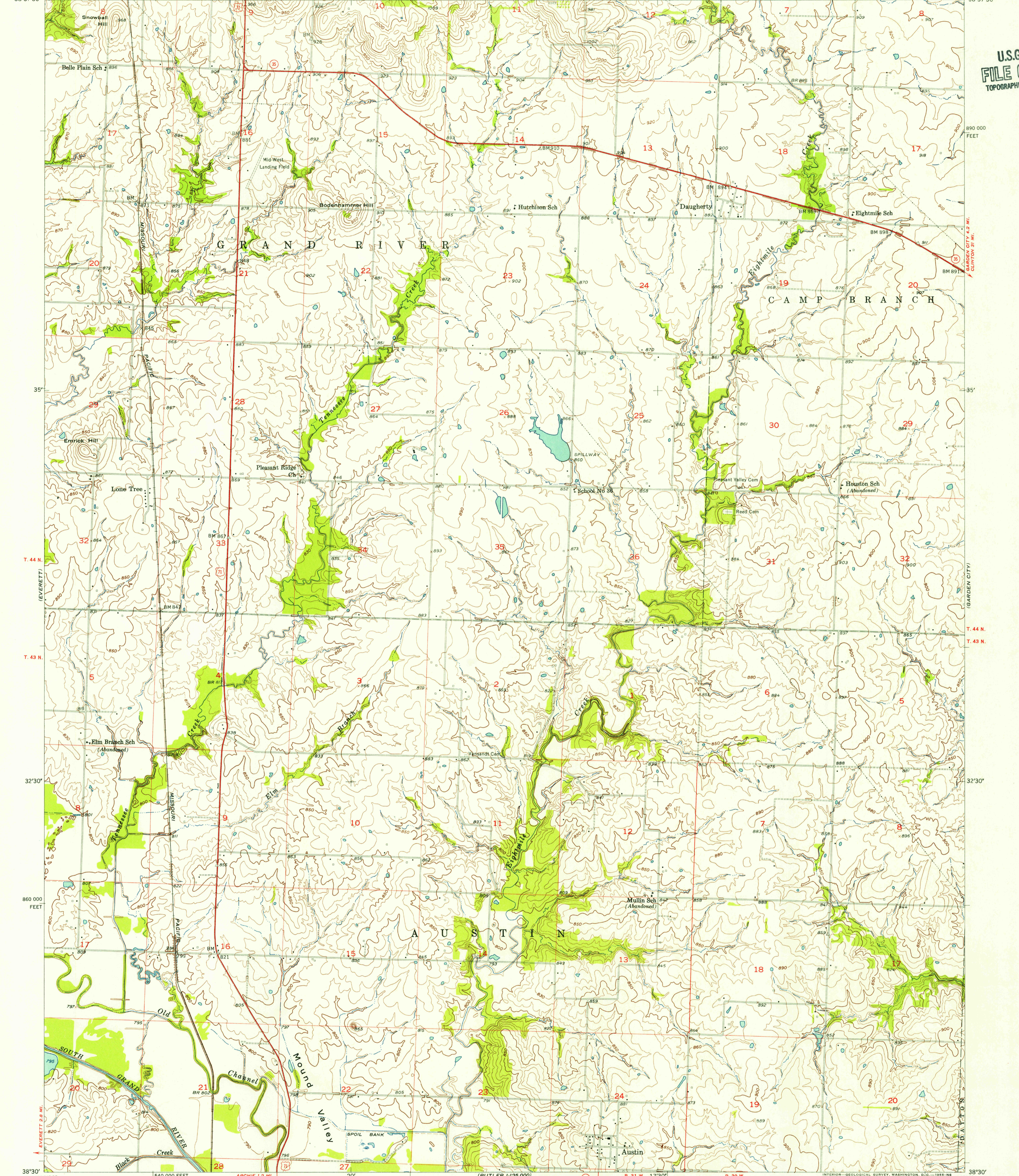
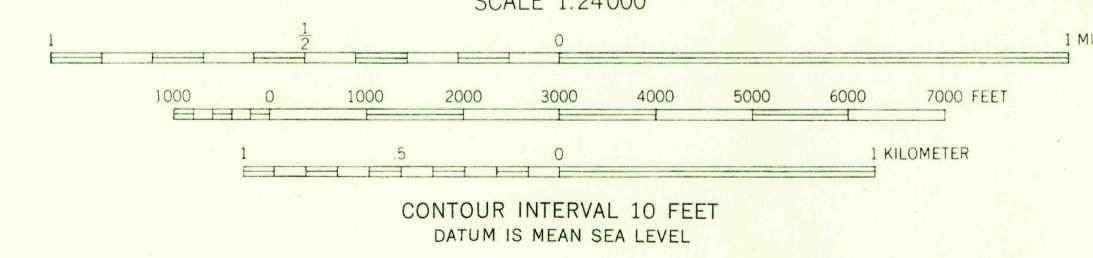
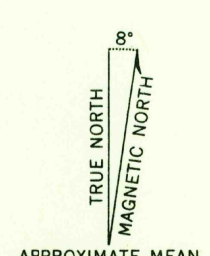


U.S.G.S. FILE COPY TOPOGRAPHIC DIVISION



Mapped, edited, and published by the Geological Survey
 Control by USGS and USC&GS
 Topography from aerial photographs by photogrammetric methods
 Aerial photographs taken 1952. Field check 1954
 Polyconic projection. 1927 North American datum
 10,000-foot grid based on Missouri coordinate system,
 west zone



ROAD CLASSIFICATION

Heavy-duty	4 LANE 6 LANE	Light-duty
Medium-duty	4 LANE 6 LANE	Unimproved dirt

U. S. Route (square symbol)
 State Route (circle symbol)

THIS MAP COMPLIES WITH NATIONAL MAP ACCURACY STANDARDS
 FOR SALE BY U. S. GEOLOGICAL SURVEY, FEDERAL CENTER, DENVER, COLORADO OR WASHINGTON 25, D. C.
 AND BY THE MISSOURI GEOLOGICAL SURVEY, ROLLA, MISSOURI
 A FOLDER DESCRIBING TOPOGRAPHIC MAPS AND SYMBOLS IS AVAILABLE ON REQUEST

U.S.G.S. FILE COPY TOPOGRAPHIC DIVISION
 AUSTIN, MO. N3830-W9415/7.5
 1954