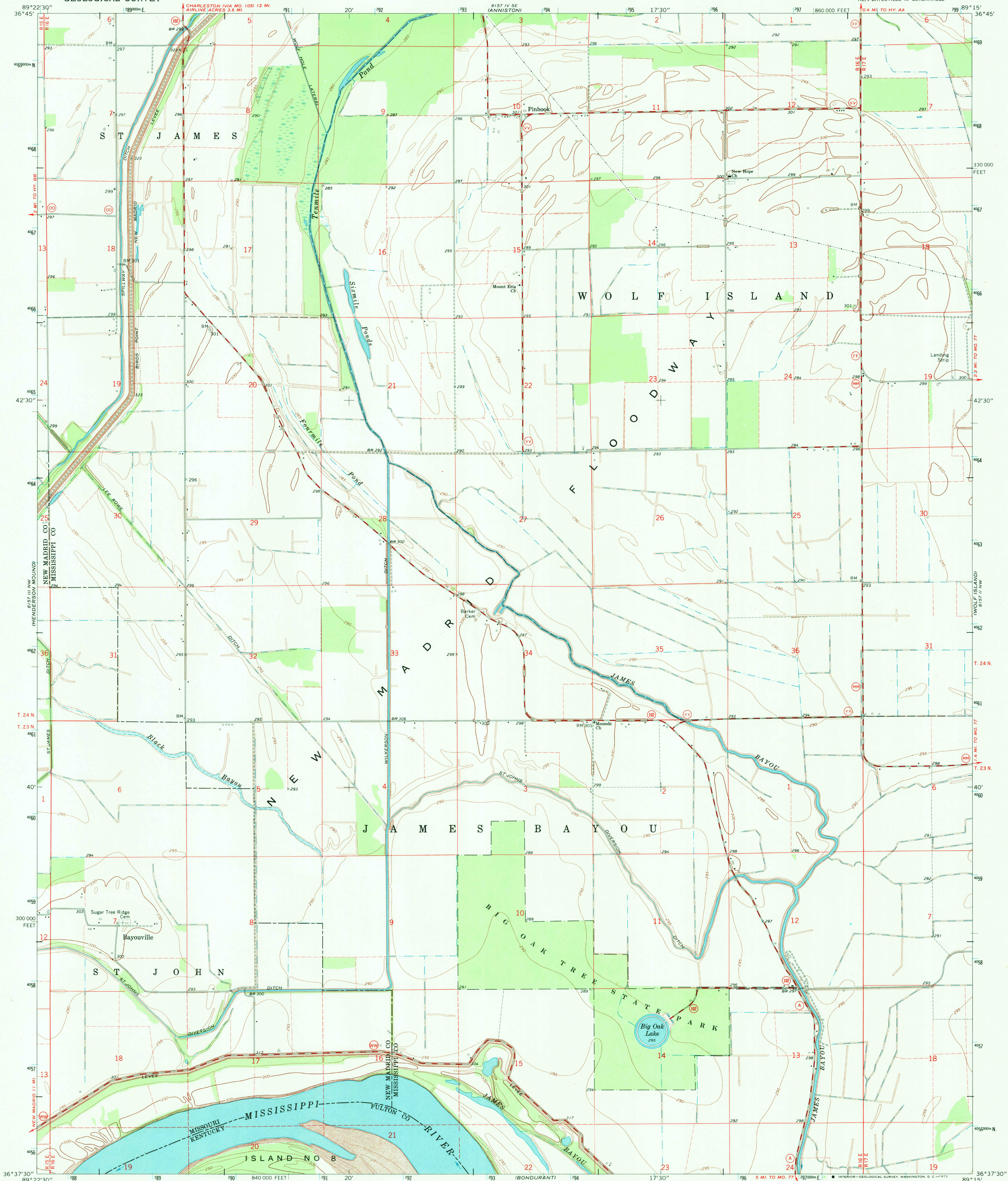
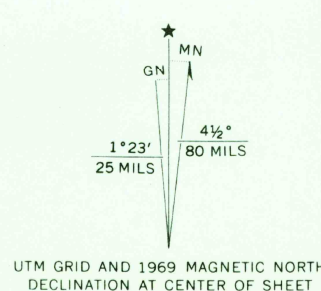


UNITED STATES  
DEPARTMENT OF THE INTERIOR  
GEOLOGICAL SURVEY

BAYOUVILLE QUADRANGLE  
MISSOURI-KENTUCKY  
7.5 MINUTE SERIES (TOPOGRAPHIC)  
NE 1/4 BAYOUVILLE 15' QUADRANGLE



Mapped, edited, and published by the Geological Survey  
Control by USGS and USC&GS  
Planimetry by photogrammetric methods from aerial photographs  
taken 1967. Topography by planetable surveys 1969  
Polyconic projection. 1927 North American datum  
10,000-foot grid based on Missouri coordinate system, east zone  
1000-meter Universal Transverse Mercator grid ticks,  
zone 16, shown in blue  
Fine red dashed lines indicate selected fence and field lines where  
generally visible on aerial photographs. This information is unchecked



THIS MAP COMPLIES WITH NATIONAL MAP ACCURACY STANDARDS  
FOR SALE BY U. S. GEOLOGICAL SURVEY, DENVER, COLORADO 80225, OR WASHINGTON, D. C. 20242,  
MISSOURI GEOLOGICAL SURVEY, ROLLA, MISSOURI 65401,  
KENTUCKY GEOLOGICAL SURVEY, LEXINGTON, KENTUCKY 40506,  
AND KENTUCKY DEPARTMENT OF COMMERCE, FRANKFORT, KENTUCKY 40601  
A FOLDER DESCRIBING TOPOGRAPHIC MAPS AND SYMBOLS IS AVAILABLE ON REQUEST

ROAD CLASSIFICATION  
Secondary highway, all weather, Light-duty road, all weather,  
improved surface  
Unimproved road, fair or dry  
weather  
State Route

BAYOUVILLE, MO.-KY.  
NE 1/4 BAYOUVILLE 15' QUADRANGLE  
N3637.5-W8915.7/5

1969  
AMS 8157 III NE-SERIES V879

USGS  
HISTORICAL FILE  
TOPOGRAPHIC DIVISION