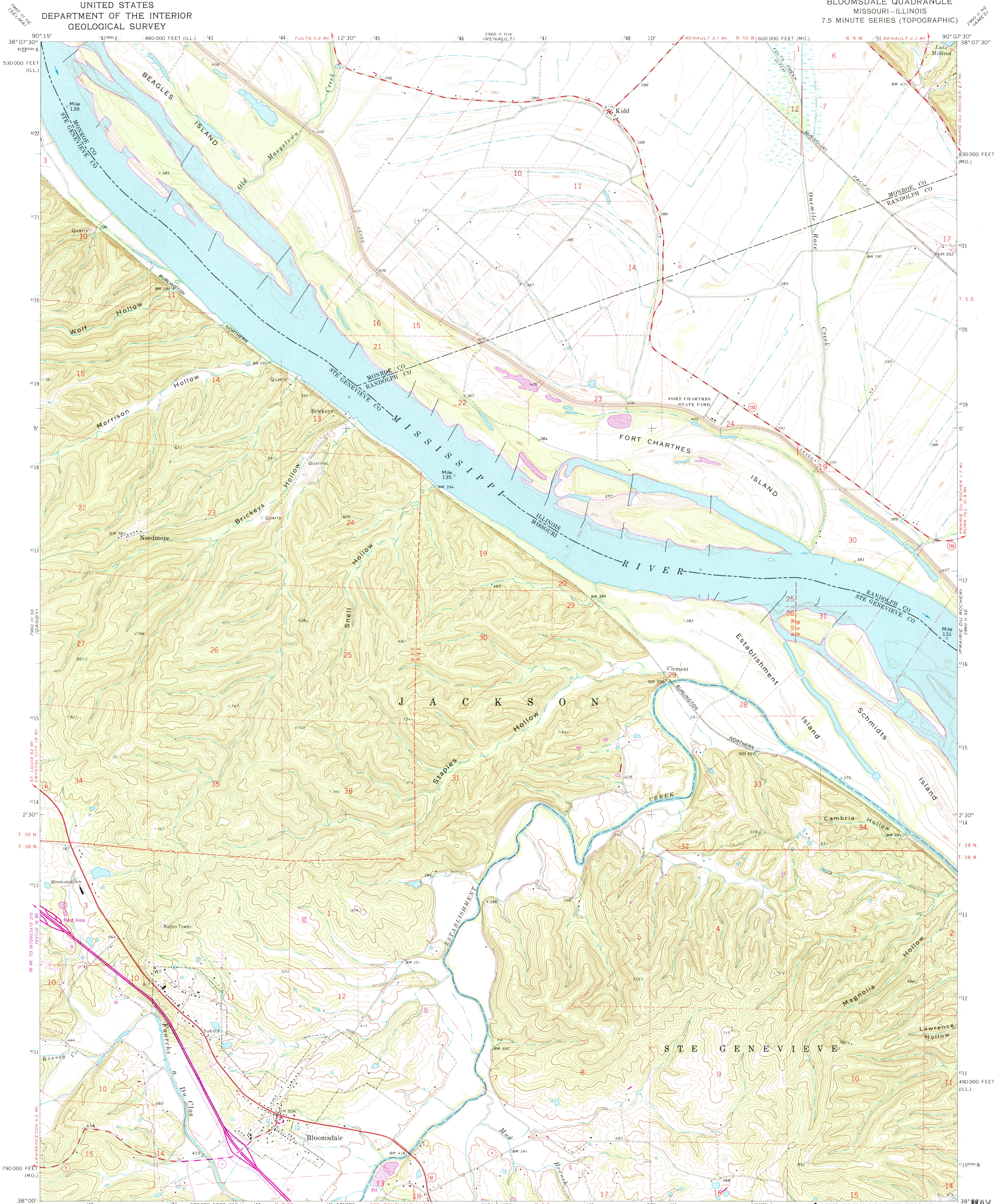


UNITED STATES
DEPARTMENT OF THE INTERIOR
GEOLOGICAL SURVEY

BLOOMSDALE QUADRANGLE
MISSOURI-ILLINOIS
7.5 MINUTE SERIES (TOPOGRAPHIC)



Mapped, edited, and published by the Geological Survey
Control by USGS and USC&GS
Topography by photogrammetric methods from aerial photographs taken 1968. Field checked 1970
Polyconic projection. 1927 North American datum.
10,000-foot grids based on Missouri coordinate system, east zone and Illinois coordinate system, west zone
1000-meter Universal Transverse Mercator grid ticks, zone 15, shown in blue
Fine red dashed lines indicate selected fence and field lines where generally visible on aerial photographs. This information is unchecked
To place on the predicted North American Datum 1983 move the projection lines 2 meters south and 9 meters east as shown by dashed corner ticks
Revisions shown in purple compiled from aerial photographs taken 1980. Map edited 1982. This information not field checked

UTM GRID AND 1982 MAGNETIC NORTH DECLINATION AT CENTER OF SHEET

1 1' 44" 31 MILS

29° 44' 31 MILS

SCALE 1:24,000

0 1000 2000 3000 4000 5000 6000 7000 FEET

0 1 2 3 4 5 6 7 8 9 10 KILOMETER

CONTOUR INTERVAL 20 FEET
DOTTED LINES REPRESENT 5-FOOT CONTOURS
NATIONAL GEODETIC VERTICAL DATUM OF 1929

THIS MAP COMPLIES WITH NATIONAL MAP ACCURACY STANDARDS
FOR SALE BY U.S. GEOLOGICAL SURVEY, DENVER, COLORADO 80225, OR RESTON, VIRGINIA 22092.,
AND THE DIVISION OF GEOLOGY AND LAND SURVEY
MISSOURI DEPARTMENT OF NATURAL RESOURCES, ROLLA, MISSOURI 65401
AND STATE GEOLOGICAL SURVEY, URBANA, ILLINOIS 61801
A FOLDER DESCRIBING TOPOGRAPHIC MAPS AND SYMBOLS IS AVAILABLE ON REQUEST

ROAD CLASSIFICATION

| | |
|--|--|
| Primary highway, all weather, hard surface | Light-duty road, all weather, improved surface |
| Secondary highway, all weather, hard surface | Unimproved road, fair or dry weather |

Interstate Route U S Route State Route

MISSOURI

QUADRANGLE LOCATION

BLOOMSDALE, MO.-ILL.

N3800-W9007.5/7.5

1970
PHOTOREVISED 1982
DMA 7960 II SW-SERIES V879

9950