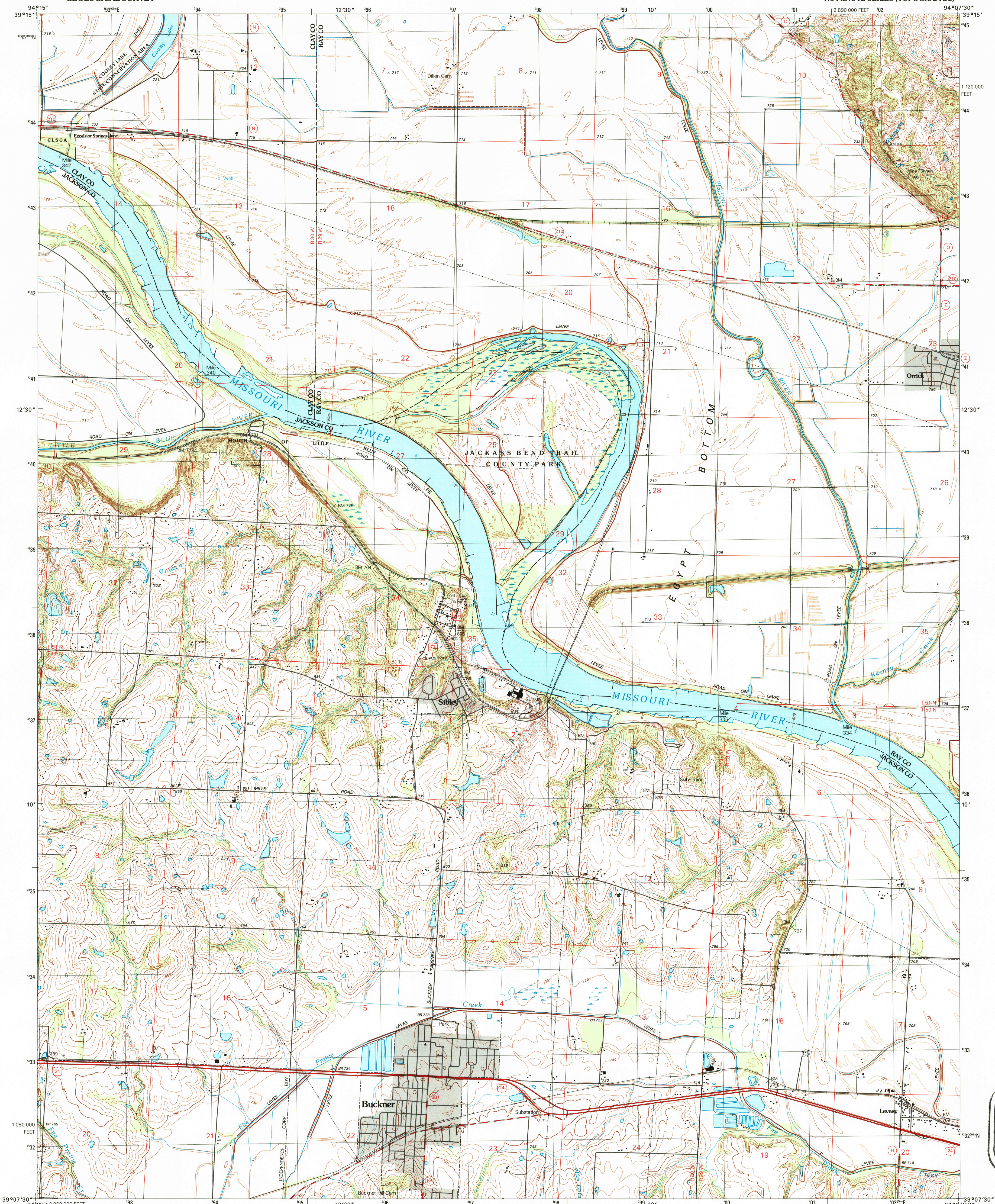


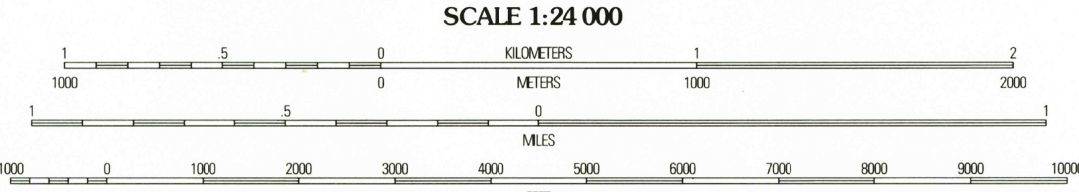
UNITED STATES
DEPARTMENT OF THE INTERIOR
GEOLOGICAL SURVEY

BUCKNER QUADRANGLE
MISSOURI
7.5-MINUTE SERIES (TOPOGRAPHIC)



Produced by the United States Geological Survey
Compiled by photogrammetric methods from imagery dated 1963
Topography partly by plane-table surveys 1965. Revised from
imagery dated 1990. PLSS and survey control current as of
1965. Map edited 1997. Contours not revised. Contours that
conflict with revised planimetry are dashed.
North American Datum of 1983 (NAD 83). Projection and
1000-meter grid: Universal Transverse Mercator, zone 15
1000-foot ticks: Missouri Coordinate System of 1983 (west zone)
North American Datum of 1927 (NAD 27) is shown by dashed
corner ticks. The values of the shift between NAD 83 and NAD 27
for 7.5-minute intersections are obtainable from National Geodetic
Survey NADCON software.
There may be private inholdings within the boundaries of
the National or State reservations shown on this map.

UTM GRID AND 1997 MAGNETIC NORTH
DECLINATION AT CENTER OF SHEET



CONTOUR INTERVAL 10 FEET
SUPPLEMENTARY CONTOUR INTERVAL 5 FEET
NATIONAL GEODETIC VERTICAL DATUM OF 1929

THIS MAP COMPLIES WITH NATIONAL MAP ACCURACY STANDARDS
FOR SALE BY U.S. GEOLOGICAL SURVEY, DENVER, COLORADO 80225, OR RESTON, VIRGINIA 22092
AND DIVISION OF GEOLOGY AND LAND SURVEY
MISSOURI DEPARTMENT OF NATURAL RESOURCES, ROLLA, MISSOURI 65401
A FOLDER DESCRIBING TOPOGRAPHIC MAPS AND SYMBOLS IS AVAILABLE ON REQUEST



QUADRANGLE LOCATION

ROAD CLASSIFICATION
Primary highway
hard surface
Secondary highway
hard surface
Light-duty road, hard or
improved surface
Unimproved road
Interstate Route
U.S. Route
State Route

1	2	3
4	5	6
7	8	9

1 Kearney
2 Excelsior Springs
3 Rayville
4 Missouri City
5 Camden
6 Blue Springs
7 Oak Grove
8 Bates City

BUCKNER, MO

1990

DMA 7162 II NW-SERIES V879

U.S. GEOLOGICAL SURVEY
APR 30 1997
REC'D FILE COPY

1-20579-709-0
1520587090876