

2462 SW (HARRISBURG)

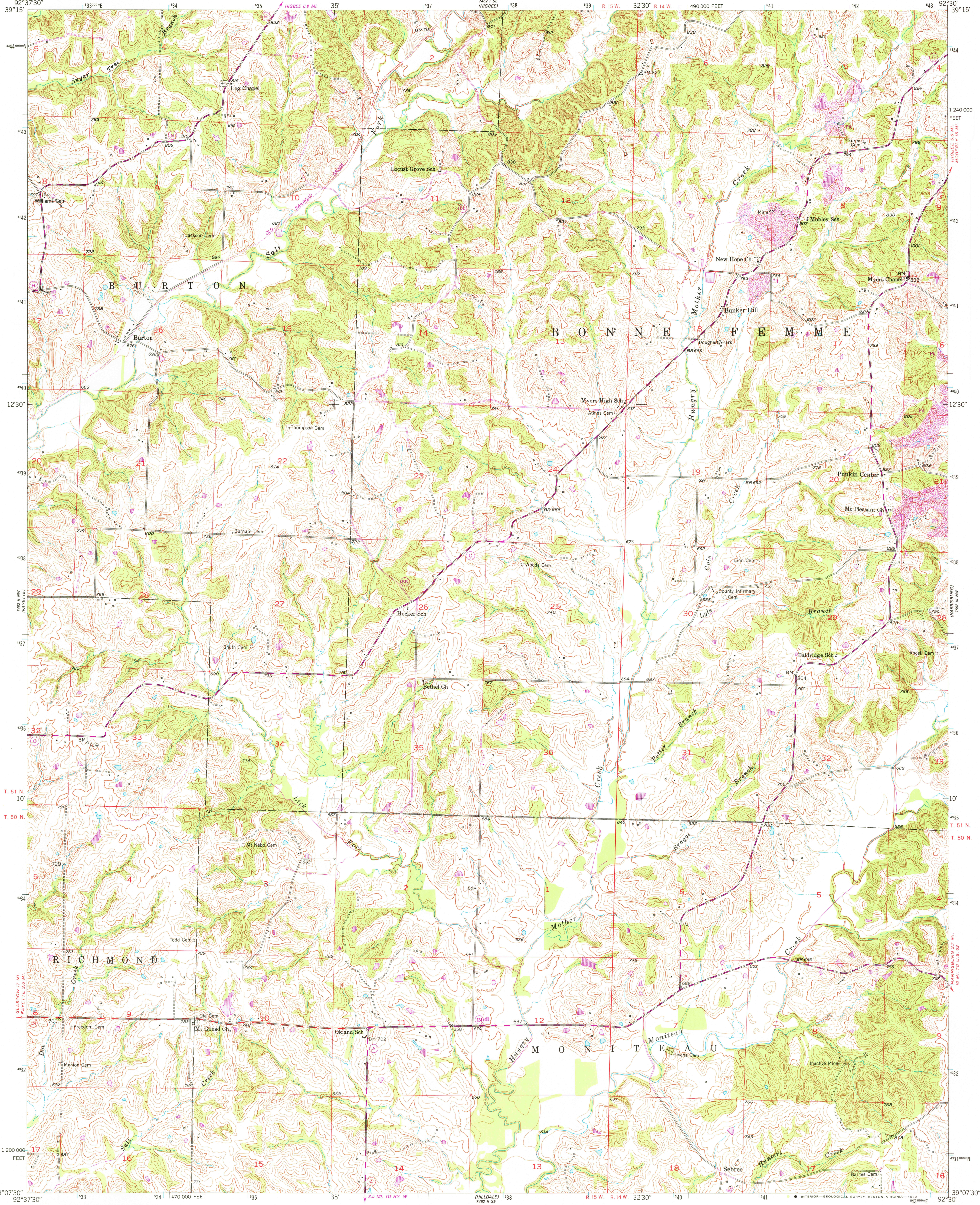
UNITED STATES
DEPARTMENT OF THE INTERIOR
GEOLOGICAL SURVEY



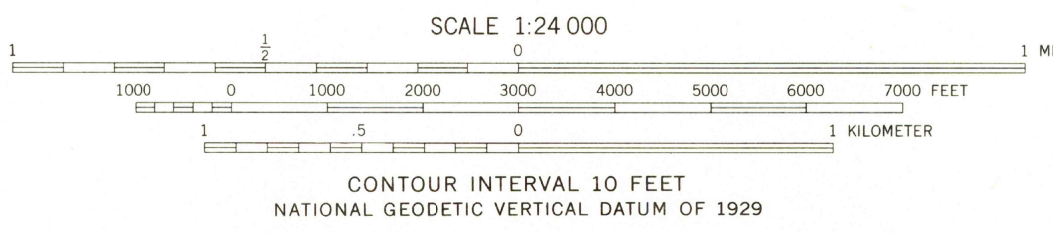
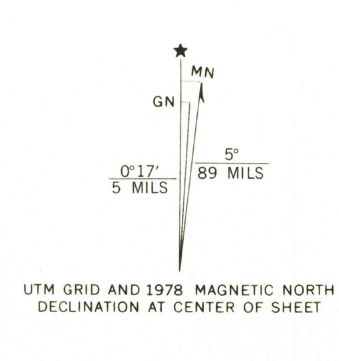
STATE OF MISSOURI
DEPARTMENT OF NATURAL RESOURCES
WALLACE B. HOWE, STATE GEOLOGIST

BURTON QUADRANGLE
MISSOURI-HOWARD CO.
7.5 MINUTE SERIES (TOPOGRAPHIC)

2462 SW (HARRISBURG)

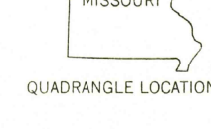


Mapped, edited, and published by the Geological Survey
Control by USGS and USC&GS
Topography from aerial photographs by Kesh plotter
Aerial photographs taken 1947. Field check 1952-1953
Polyconic projection. 1927 North American datum
10,000-foot grid based on Missouri coordinate system,
central zone
1000-meter Universal Transverse Mercator grid ticks,
zone 15, shown in blue
Revisions shown in purple compiled from aerial photographs taken
1977. Map edited 1978. This information not field checked



ROAD CLASSIFICATION

Primary highway, hard surface	Light-duty road, hard or improved surface
Secondary highway, hard surface	Unimproved road
Interstate Route	U. S. Route
	State Route



THIS MAP COMPLIES WITH NATIONAL MAP ACCURACY STANDARDS
FOR SALE BY U. S. GEOLOGICAL SURVEY, DENVER, COLORADO 80225, OR RESTON, VIRGINIA 22092
AND THE DIVISION OF RESEARCH AND TECHNICAL INFORMATION
MISSOURI DEPARTMENT OF NATURAL RESOURCES, ROLLA, MISSOURI 65401
A FOLDER DESCRIBING TOPOGRAPHIC MAPS AND SYMBOLS IS AVAILABLE ON REQUEST

USGS
Historical File
Topographic Division
BURTON, MO.
N 3907.5 - W 9230/7.5
1953
PHOTOREVISED 1978
AMS 7462 II NE - SERIES V879

MAY 11 1979

3400