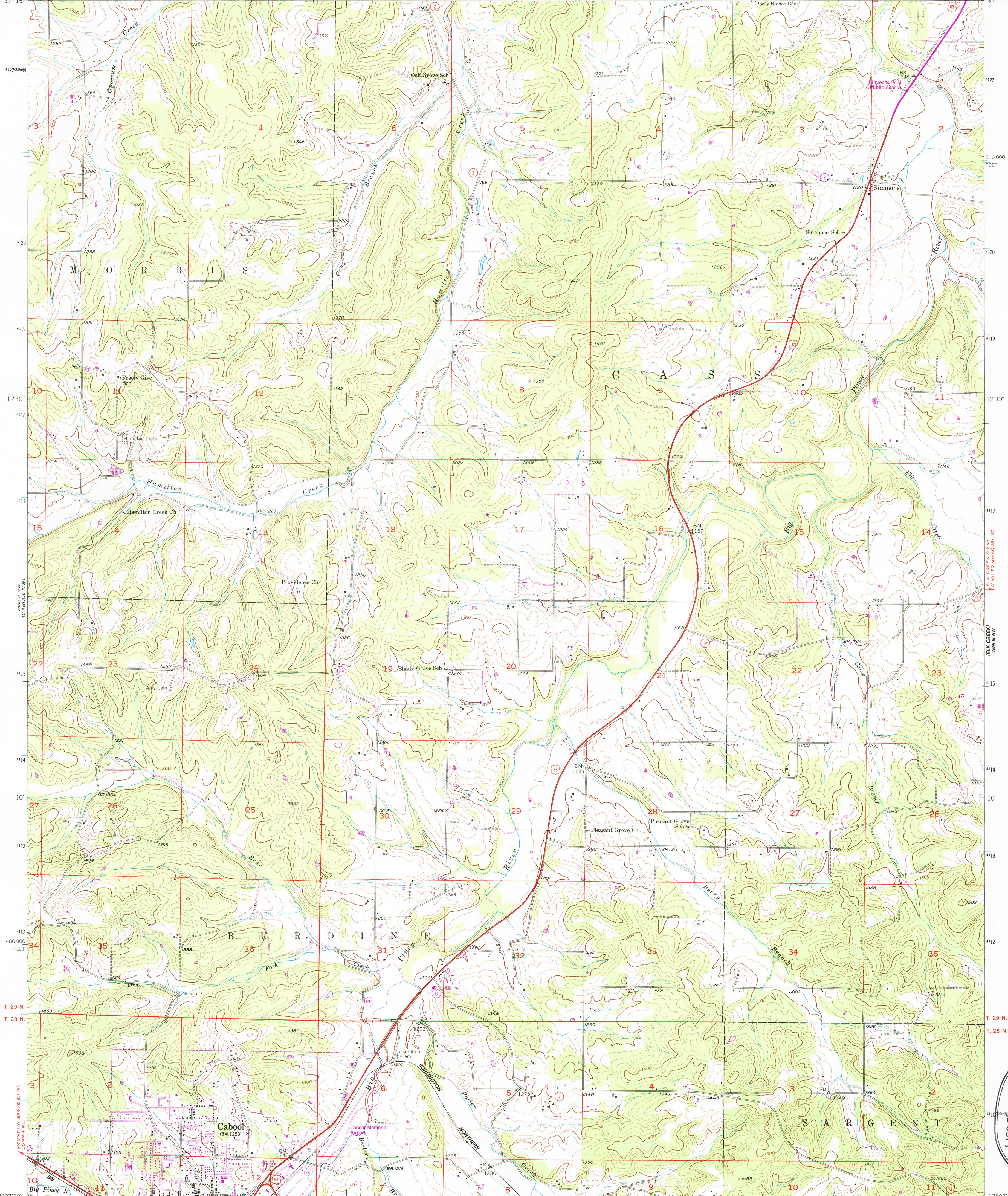


92°07'30" 578000E 7568 / SE 7.8 MI. TO MISSOURI 17 7568 / SE HOUSTON 6.2 MI. LICKING 25 MI. 92°00'

R. 11 W. S81 5' R. 10 W. S82 2'30" S86 640 000 FEET 37°15'



USGS NMID HISTORICAL MAP  
MAR 14 1986  
REC'D FILE COPY

Mapped, edited, and published by the Geological Survey

Control by USGS and USC&amp;GS

Topography from aerial photographs by multiplex methods  
Aerial photographs taken 1949. Field check 1951

Polyconic projection. 1927 North American datum  
10,000-foot grid based on Missouri coordinate system,

central zone  
1000-meter Universal Transverse Mercator grid ticks,  
zone 15, shown in blue

To place on the predicted North American Datum 1983,  
move the projection lines 2 meters south and  
14 meters east as shown by dashed corner ticks

Revisions shown in purple compiled from aerial photographs taken 1982 and other sources. This information not field checked. Map edited 1985

SCALE 1:24 000

0 1 MIL

0 1000 2000 3000 4000 5000 6000 7000 FEET

0 0.5 1 KILOMETER

CONTOUR INTERVAL 20 FEET

NATIONAL GEODETIC VERTICAL DATUM OF 1929

THIS MAP COMPLIES WITH NATIONAL MAP ACCURACY STANDARDS  
FOR SALE BY U. S. GEOLOGICAL SURVEY, DENVER, COLORADO 80225, OR RESTON, VIRGINIA 22092  
AND DIVISION OF GEOLOGY AND LAND SURVEY  
MISSOURI DEPARTMENT OF NATURAL RESOURCES, ROLLA, MISSOURI 65401  
A FOLDER DESCRIBING TOPOGRAPHIC MAPS AND SYMBOLS IS AVAILABLE ON REQUEST

ROAD CLASSIFICATION

Heavy-duty		<b>4 LANE 16 LANE</b>	Light-duty		
Medium-duty		<b>4 LANE 16 LANE</b>	Unimproved dirt		
		U. S. Route			State Route

CABOOL NE, MO.  
NE/4 CABOOL 15' QUADRANGLE  
37092-B1-TF-024  
1951  
PHOTOREVISED 1985  
DMA 7558 II NE-SERIES V87