

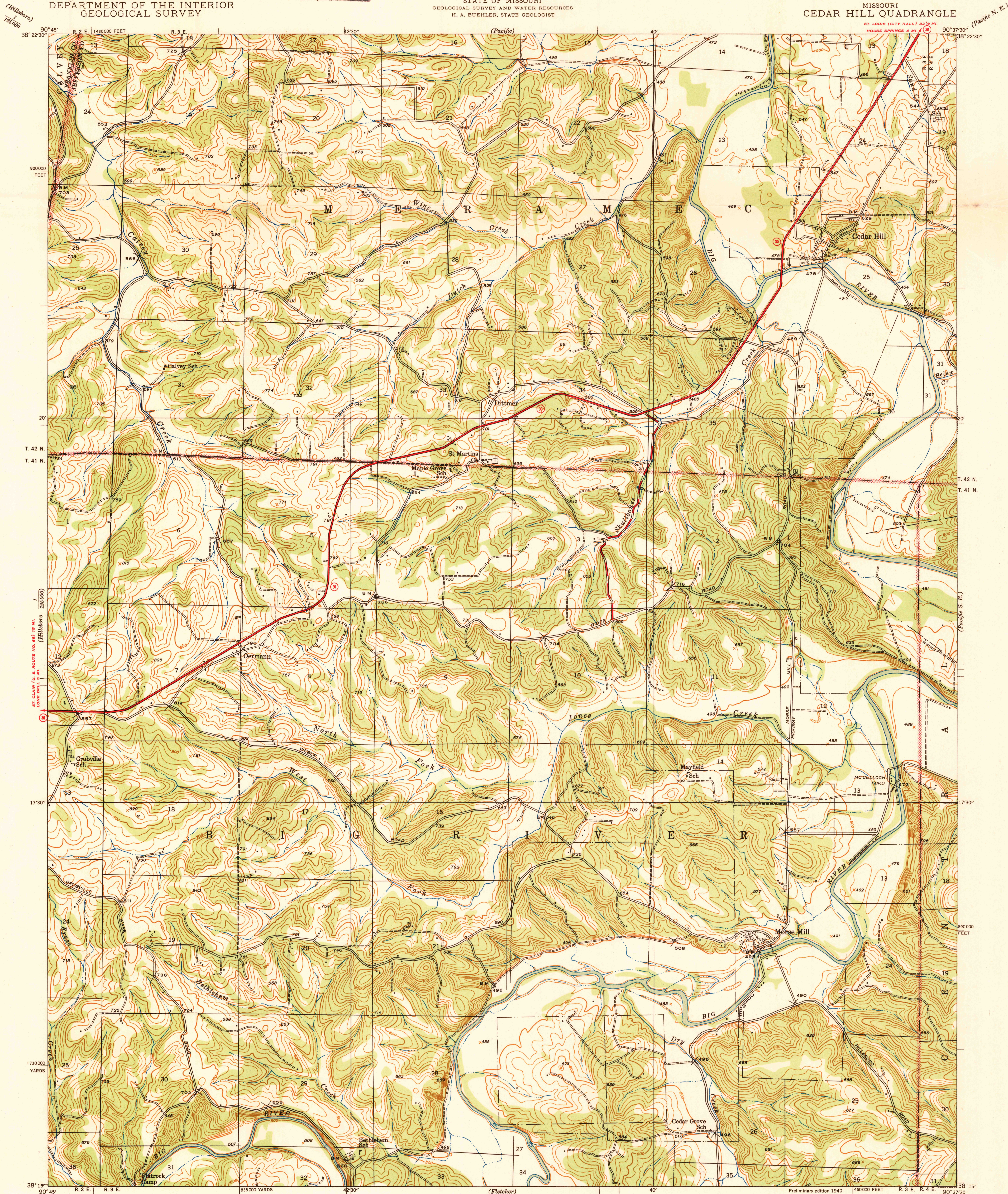
U. S. G. S.
FILE COPY
Inspection and Editing.

UNITED STATES
DEPARTMENT OF THE INTERIOR
GEOLOGICAL SURVEY

STATE OF MISSOURI
GEOLOGICAL SURVEY AND WATER RESOURCES
H. A. BUEHLER, STATE GEOLOGIST

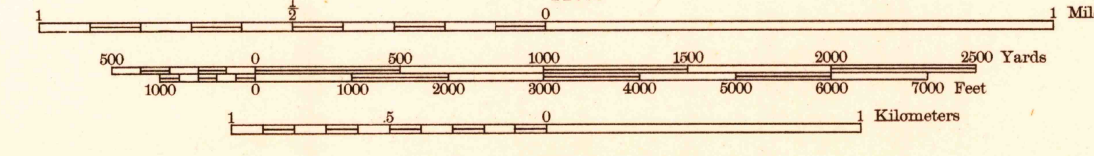
MISSOURI
CEDAR HILL QUADRANGLE

ST. LOUIS (CITY HALL) 32 1/2 MI.
HOUSE SPRINGS 4 MI.



Glenn S. Smith, Division Engineer
Topography by W. B. Brewer
Culture and drainage in part compiled from aerial photographs
Surveyed in 1938

TRUE NORTH
MAGNETIC NORTH
APPROXIMATE MEAN
DECLINATION, 1938



Scale 24000
Contour interval 20 feet
10 foot contours added in dashed lines
Datum is mean sea level

ROUTES USUALLY TRAVELED
HARD IMPERVIOUS SURFACES
OTHER SURFACE IMPROVEMENTS
1940
② U. S. ROUTE
③ STATE ROUTE
Polyconic projection. 1927 North American datum
5000 yard grid based on U. S. zone system, C
10000 foot grid based on Missouri (East)
rectangular coordinate system
To join Pacific S. E. map, use dotted projection corners

U.S.G.S.
Historical File
Topographic
FILE COPY
Inspection and Editing.

CEDAR HILL, MO.
N 3815-W 9037.5/7.5

AUG 2 - 1940