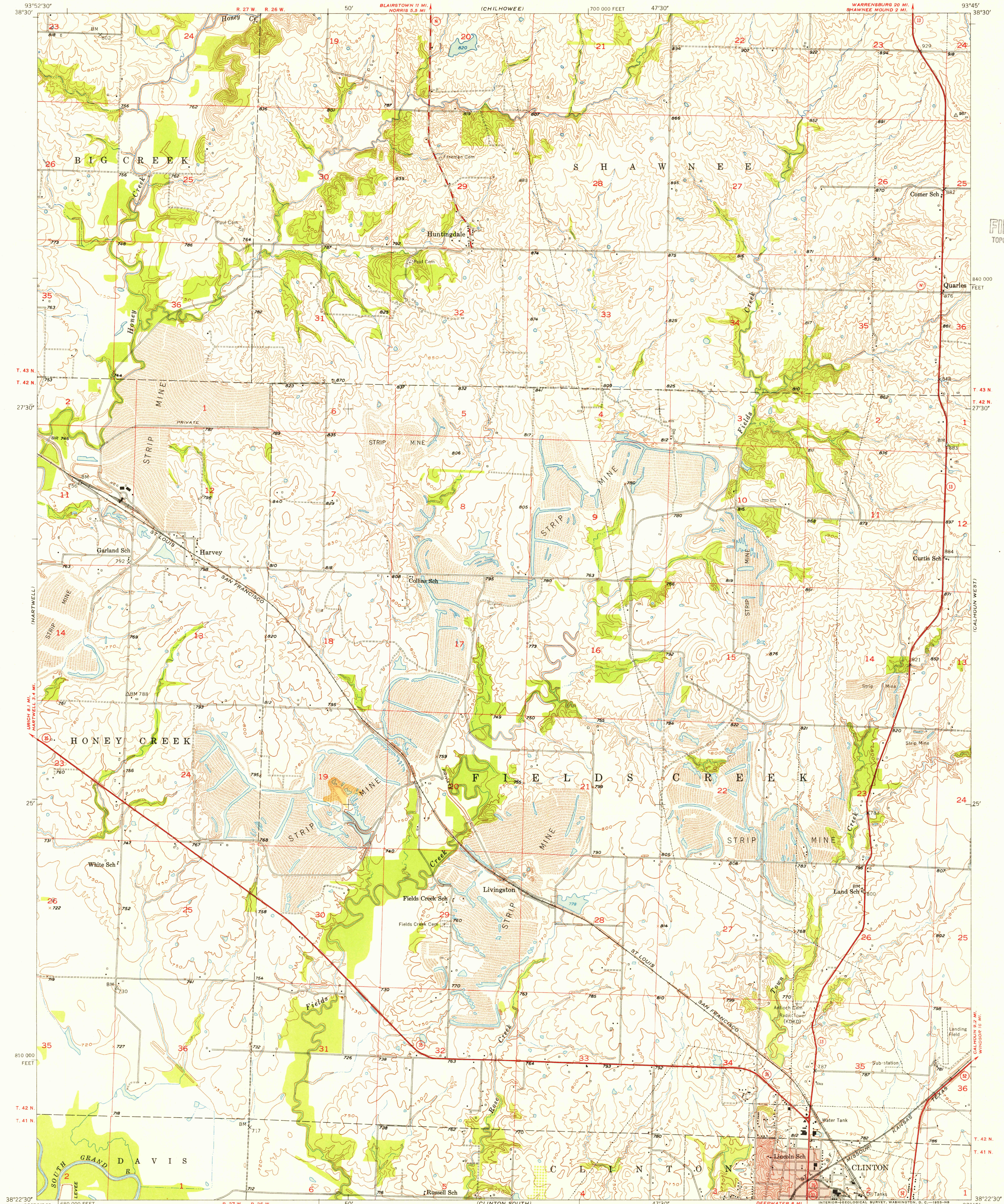


UNITED STATES  
DEPARTMENT OF THE INTERIOR  
GEOLOGICAL SURVEY

CLINTON NORTH QUADRANGLE  
MISSOURI-HENRY CO.  
7.5 MINUTE SERIES (TOPOGRAPHIC)

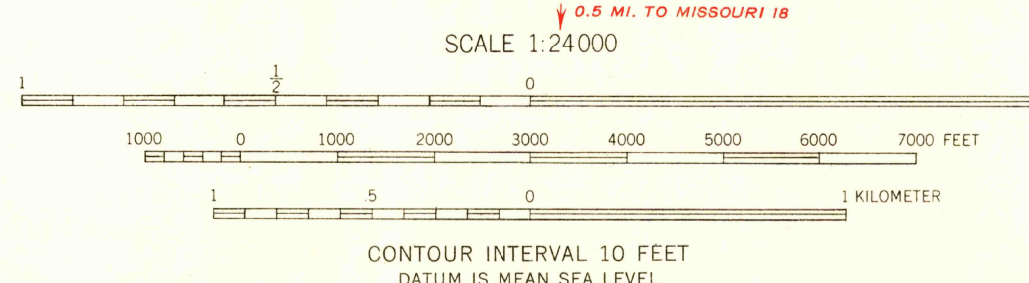
WARRENSBURG  
1:250,000

U.S.G.S.  
FILE COPY  
TOPOGRAPHIC DIVISION



Mapped, edited, and published by the Geological Survey as part of the Department of the Interior program for the development of the Missouri River Basin.  
Control by USGS and USC&GS.  
Topography from aerial photographs by photogrammetric methods and by plane-table surveys 1953. Aerial photographs taken 1950.  
Polyconic projection. 1927 North American datum.  
10,000-foot grid based on Missouri coordinate system, west zone.  
Red tint indicates areas in which only landmark buildings are shown.

TRUE NORTH  
MAGNETIC NORTH  
APPROXIMATE MEAN DECLINATION, 1953



THIS MAP COMPLIES WITH NATIONAL MAP ACCURACY STANDARDS  
FOR SALE BY U.S. GEOLOGICAL SURVEY, FEDERAL CENTER, DENVER, COLORADO OR WASHINGTON 25, D. C.  
AND BY THE MISSOURI GEOLOGICAL SURVEY, ROLLA, MISSOURI  
A FOLDER DESCRIBING TOPOGRAPHIC MAPS AND SYMBOLS IS AVAILABLE ON REQUEST

USGS  
Historical File  
Topographic Division



ROAD CLASSIFICATION  
Heavy-duty 4 LANE 16 LANE Light-duty  
Medium-duty 4 LANE 16 LANE Unimproved dirt  
U.S. Route State Route

CLINTON NORTH, MO.  
N3822.5-W9345/7.5

U.S.G.S.  
FILE COPY  
TOPOGRAPHIC DIVISION

1953

SEP 13 1955