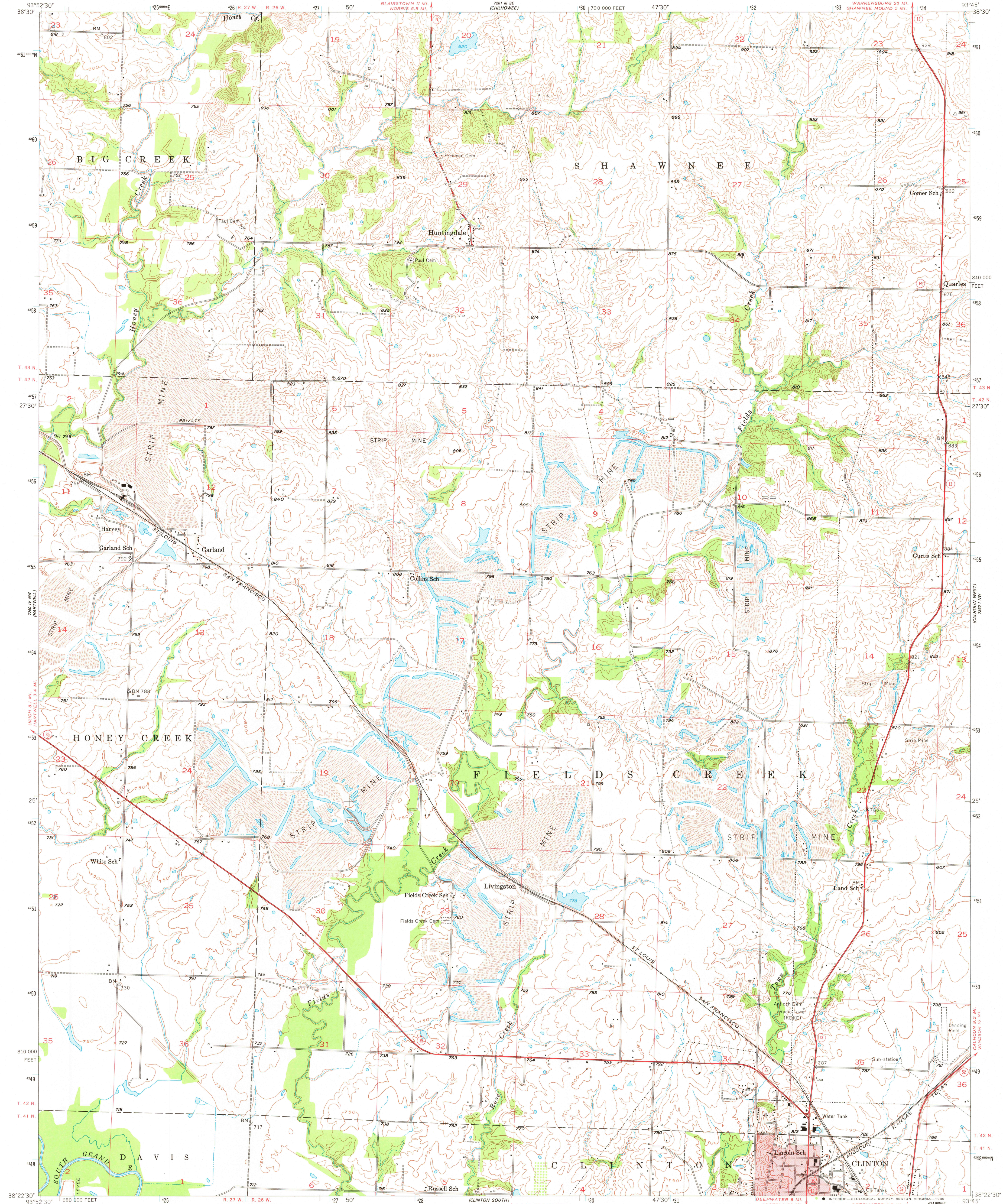


UNITED STATES
DEPARTMENT OF THE INTERIOR
GEOLOGICAL SURVEY

CLINTON NORTH QUADRANGLE
MISSOURI-HENRY CO.
7.5 MINUTE SERIES (TOPOGRAPHIC)



Mapped, edited, and published by the Geological Survey
as part of the Department of the Interior program
for the development of the Missouri River Basin

Control by USGS and USC&GS

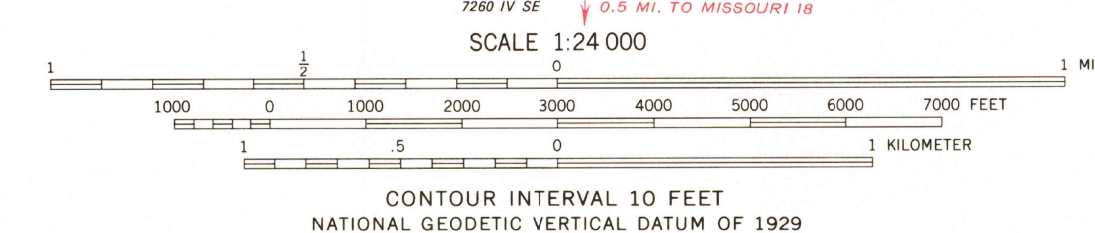
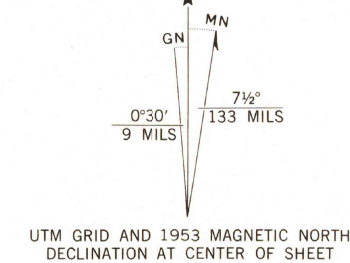
Topography from aerial photographs by photogrammetric methods
and by plane-table surveys 1953. Aerial photographs taken 1950

Polyconic projection. 1927 North American datum
10,000-foot grid based on Missouri coordinate system,
west zone

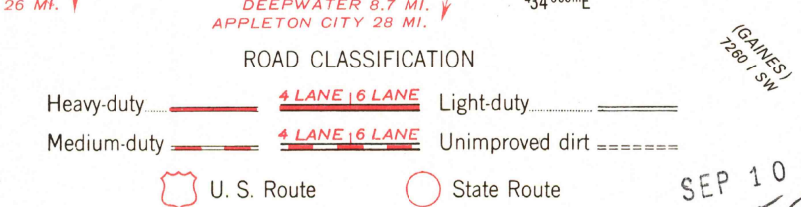
Red tint indicates areas in which only
landmark buildings are shown

1000-meter Universal Transverse Mercator grid ticks,
zone 15, shown in blue

To place on the predicted North American Datum 1983 move
the projection lines 18 meters east as shown by dashed
corner ticks



THIS MAP COMPLIES WITH NATIONAL MAP ACCURACY STANDARDS
FOR SALE BY U. S. GEOLOGICAL SURVEY, DENVER, COLORADO 80225, OR RESTON, VIRGINIA 22092,
AND THE DIVISION OF GEOLOGY AND LAND SURVEY
MISSOURI DEPARTMENT OF NATURAL RESOURCES, ROLLA, MISSOURI 65401
A FOLDER DESCRIBING TOPOGRAPHIC MAPS AND SYMBOLS IS AVAILABLE ON REQUEST



USGS
Historical File
Topographic Division

CLINTON NORTH, MO.
N3822.5-W9345/7.5
1953
DMA 7260 IV NE-SERIES V879

SEP 10 1980
1500