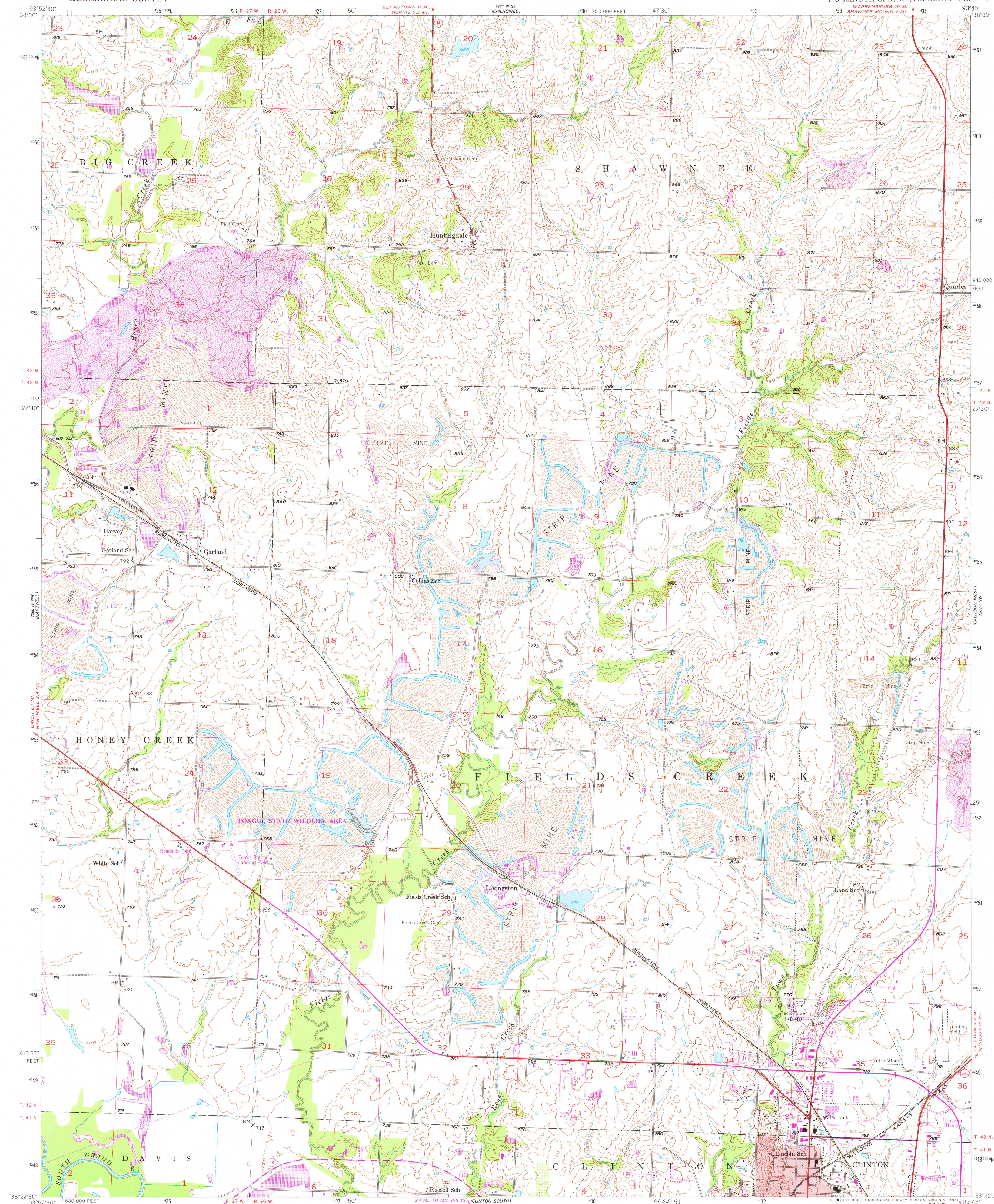


UNITED STATES
DEPARTMENT OF THE INTERIOR
GEOLOGICAL SURVEY

CLINTON NORTH QUADRANGLE
MISSOURI-HENRY CO.
7.5 MINUTE SERIES (TOPOGRAPHIC)



Mapped, edited, and published by the Geological Survey as part of the Department of the Interior program for the development of the Missouri River Basin Control by USGS and USC&GS
Topography from aerial photographs by photogrammetric methods and by plane-table surveys 1953. Aerial photographs taken 1950
Polyconic projection. 1927 North American datum 10,000-foot grid based on Missouri coordinate system, west zone
Red tint indicates areas in which only landmark buildings are shown
1000-meter Universal Transverse Mercator grid ticks, zone 15, shown in blue
To place on the predicted North American Datum 1983 move the projection lines 18 meters east as shown by dashed corner ticks

UTM GRID AND 1981 MAGNETIC NORTH DECLINATION AT CENTER OF SHEET
There may be private inholdings within the boundaries of the National or State reservations shown on this map

SCALE 1:24 000
CONTOUR INTERVAL 10 FEET
NATIONAL GEODETIC VERTICAL DATUM OF 1929
THIS MAP COMPLIES WITH NATIONAL MAP ACCURACY STANDARDS
FOR SALE BY U. S. GEOLOGICAL SURVEY, DENVER, COLORADO 80225, OR RESTON, VIRGINIA 22092,
AND THE DIVISION OF GEOLOGY AND LAND SURVEY
MISSOURI DEPARTMENT OF NATURAL RESOURCES, ROLLA, MISSOURI 65401
A FOLDER DESCRIBING TOPOGRAPHIC MAPS AND SYMBOLS IS AVAILABLE ON REQUEST

CLINTON NORTH, MO.
N3822.5-W9345.7.5
1953
PHOTOREVISED 1981
DMA 7280 IV NE-SERIES V879
ROAD CLASSIFICATION
Heavy-duty 4 LANE 1 LANE Light-duty
Medium-duty 4 LANE 1 LANE Unimproved dirt
U. S. Route State Route
QUADRANGLE LOCATION
Revisions shown in purple compiled from aerial photographs taken 1950. Map edited 1981
This information not field checked
RETURN TO:
USGS NMD HISTORICAL MAP ARCHIVES

ARR 151982
2100