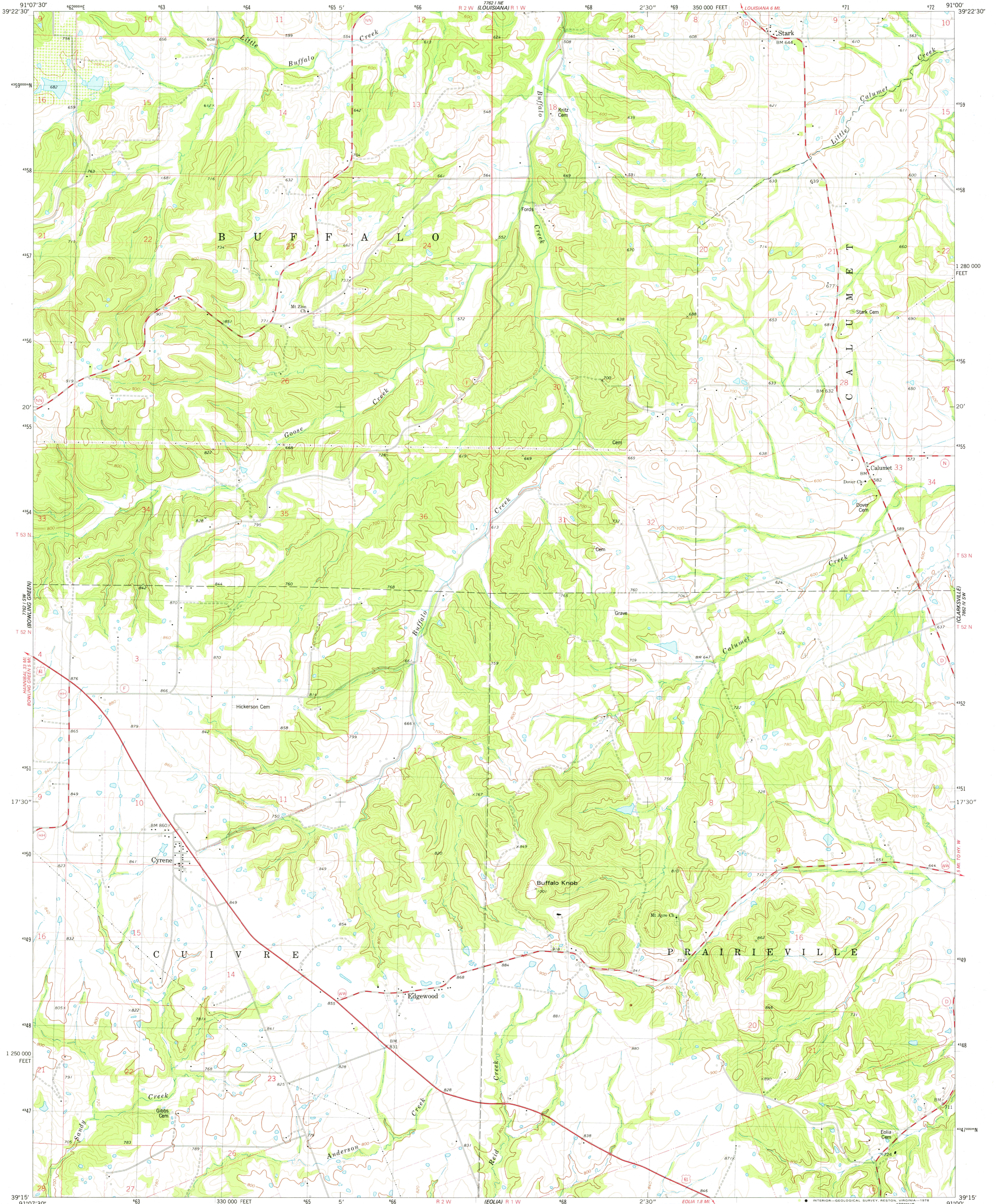


7152 1/4 NW

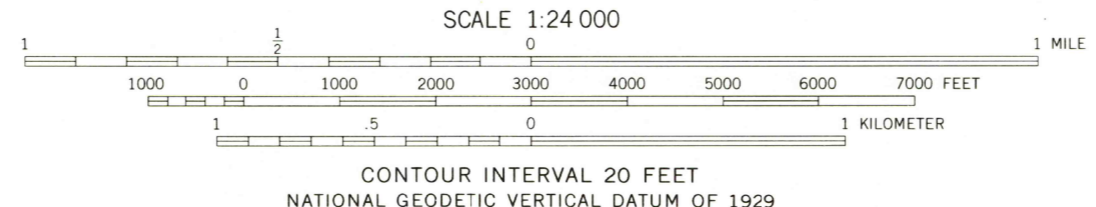
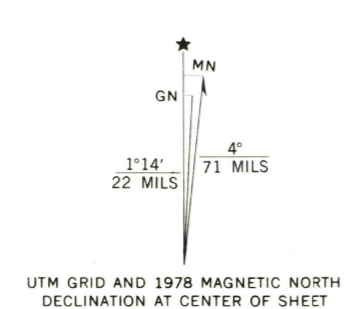
UNITED STATES  
DEPARTMENT OF THE INTERIOR  
GEOLOGICAL SURVEY

CYRENE QUADRANGLE  
MISSOURI—PIKE CO.  
7.5 MINUTE SERIES (TOPOGRAPHIC)  
8E/4 BOWLING GREEN 15' QUADRANGLE

7082 1/4 NW WEST 1/4  
PLEASANT HILL WEST 1/4



Mapped, edited, and published by the Geological Survey  
Control by USGS and NOS/NOAA  
Topography by photogrammetric methods from aerial photographs  
taken 1972. Field checked 1973. Map edited 1978  
Projection and 10,000-foot grid ticks: Missouri coordinate  
system, east zone (transverse Mercator)  
1000-meter Universal Transverse Mercator grid, zone 15  
1927 North American datum  
Fine red dashed lines indicate selected fence and field lines where  
generally visible on aerial photographs. This information is unchecked



- Primary highway, hard surface
- Secondary highway, hard surface
- Unimproved road
- Light-duty road, hard or improved surface
- Interstate Route
- U. S. Route
- State Route

THIS MAP COMPLIES WITH NATIONAL MAP ACCURACY STANDARDS  
FOR SALE BY U. S. GEOLOGICAL SURVEY, DENVER, COLORADO 80225, OR RESTON, VIRGINIA 22092,  
AND THE DIVISION OF RESEARCH AND TECHNICAL INFORMATION  
MISSOURI DEPARTMENT OF NATURAL RESOURCES, ROLLA, MISSOURI 65401  
A FOLDER DESCRIBING TOPOGRAPHIC MAPS AND SYMBOLS IS AVAILABLE ON REQUEST

CYRENE, MO. NOV 21 1978  
8E/4 BOWLING GREEN 15' QUADRANGLE  
N3915-W9100/7.5  
1978  
AMS 7762 I SE—SERIES V879

2900