

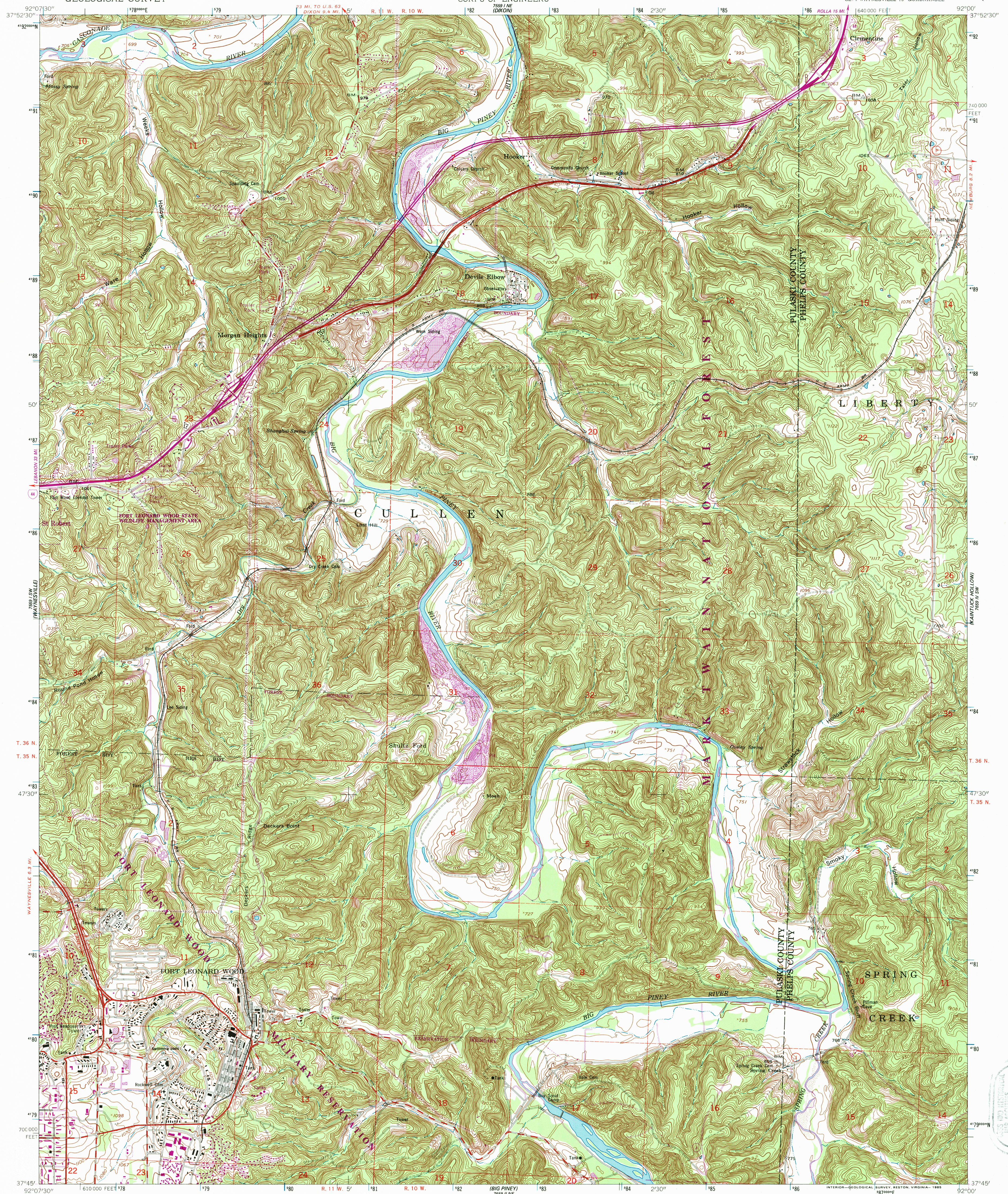
1889 NW
1889 SW
1889 SE
1889 NE

UNITED STATES
DEPARTMENT OF THE INTERIOR
GEOLOGICAL SURVEY

UNITED STATES
DEPARTMENT OF THE ARMY
CORPS OF ENGINEERS

DEVILS ELBOW QUADRANGLE
MISSOURI
7.5 MINUTE SERIES (TOPOGRAPHIC)
SE 1/4 WAYNESVILLE 15' QUADRANGLE

1889 NW
1889 SW
1889 SE
1889 NE



Mapped by the Army Map Service
Published for civil use by the Geological Survey
Control by USGS, USC&GS, and USCE
Topography from aerial photographs by photogrammetric methods
Aerial photographs taken 1953. Field check 1954
Polyconic projection. 1927 North American datum
10,000-foot grid based on Missouri coordinate system, central zone
1000-meter Universal Transverse Mercator grid ticks,
zone 15, shown in blue
Dashed land lines indicate approximate locations
Unchecked elevations are shown in brown
To place on the predicted North American Datum 1983,
move the projection lines 2 meters south and
14 meters east as shown by dashed corner ticks

UTM GRID AND 1985 MAGNETIC NORTH
DECLINATION AT CENTER OF SHEET
There may be private inholdings within
the boundaries of the National or
State reservations shown on this map

SCALE 1:24,000
1 0 1000 2000 3000 4000 5000 6000 7000 FEET
1 0 5 10 KILOMETER
CONTOUR INTERVAL 10 FEET
NATIONAL GEODETIC VERTICAL DATUM OF 1929
FOR SALE BY U.S. GEOLOGICAL SURVEY, DENVER, COLORADO 80225, OR RESTON, VIRGINIA 22092
AND DIVISION OF GEOLOGY AND LAND SURVEY
MISSOURI DEPARTMENT OF NATURAL RESOURCES, ROLLA, MISSOURI 65401
A FOLDER DESCRIBING TOPOGRAPHIC MAPS AND SYMBOLS IS AVAILABLE ON REQUEST



ROAD CLASSIFICATION 1957
Heavy-duty ——— Light-duty ———
Medium-duty ——— Unimproved dirt ———
U.S. Route ——— State Route ———
Interstate Route ———
DEVILS ELBOW, MO.
SE 1/4 WAYNESVILLE 15' QUADRANGLE
37092-G1-TF-024
1954
PHOTOREVISED 1985
DMA 1559 1 SE—SERIES V879

U.S. GEOLOGICAL SURVEY
JAN 3 1 1997
REC'D FILE COPY

ISBN 0-107-27141-5
9 780607 271647