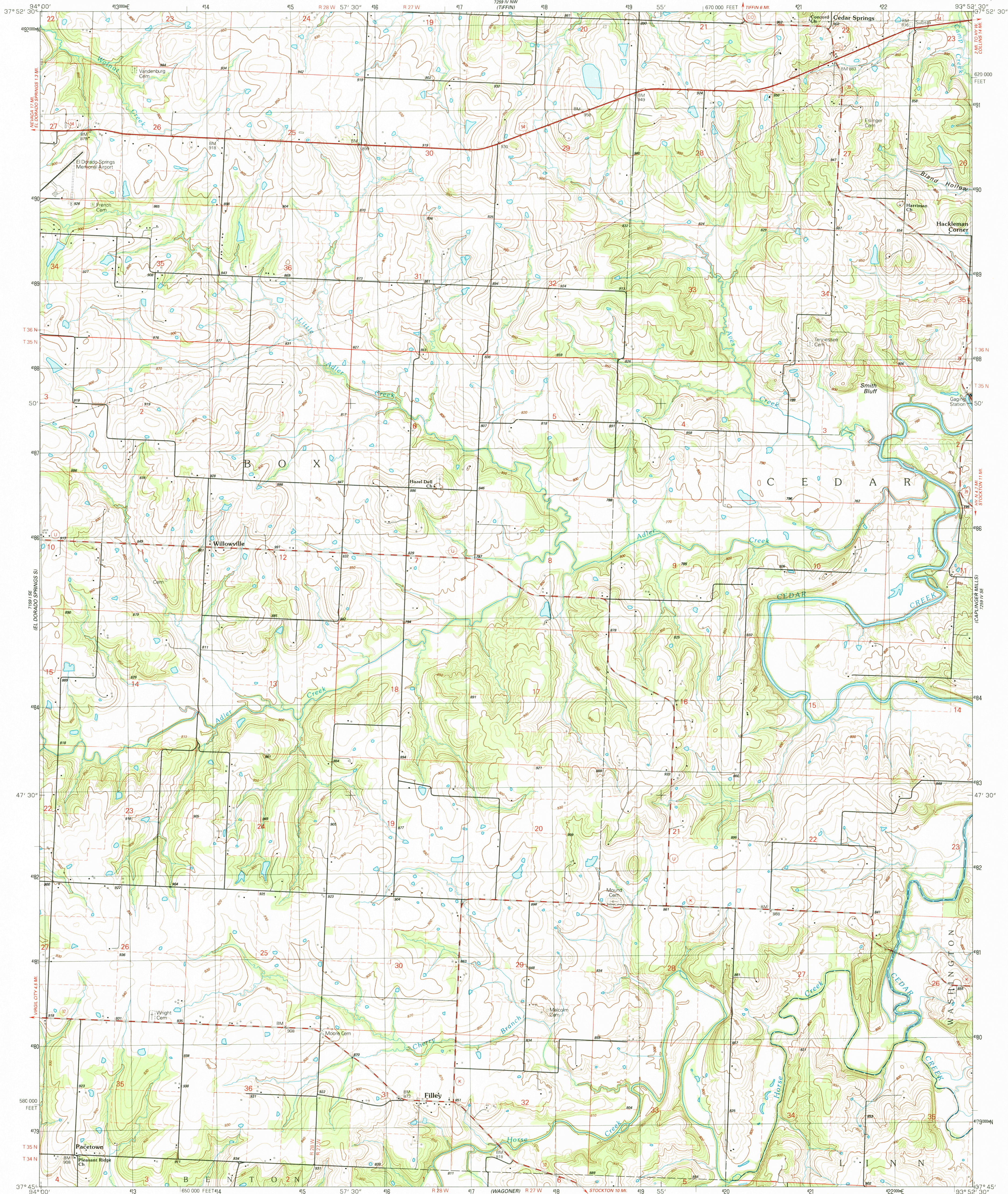


UNITED STATES
DEPARTMENT OF THE INTERIOR
GEOLOGICAL SURVEY

FILLEY QUADRANGLE
MISSOURI-CEDAR CO.
7.5 MINUTE SERIES (TOPOGRAPHIC)



Produced by the United States Geological Survey

Control by USGS and NOS/NOAA

Compiled from aerial photographs taken 1986

Field checked 1989. Map edited 1991

Projection and 10,000-foot grid ticks: Missouri coordinate

system, west zone (transverse Mercator)

1000-meter Universal Transverse Mercator grid, zone 15

1927 North American Datum

The difference between 1927 North American Datum and North

American Datum of 1983 (NAD 83) for 7.5-minute intersections

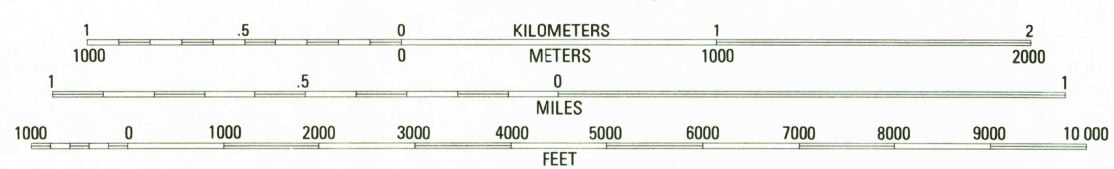
is given in USGS Bulletin 1875. The NAD 83 is shown by

dashed corner ticks

Fine red dashed lines indicate selected fence and field lines where

generally visible on aerial photographs. This information is unchecked

SCALE 1:24 000

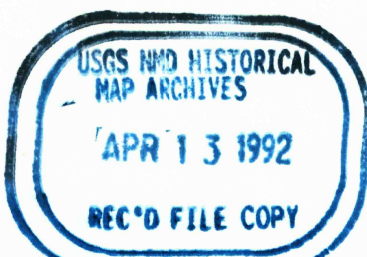


CONTOUR INTERVAL 10 FEET
NATIONAL GEODETIC VERTICAL DATUM OF 1929

THIS MAP COMPLIES WITH NATIONAL MAP ACCURACY STANDARDS
FOR SALE BY U. S. GEOLOGICAL SURVEY, DENVER, COLORADO 80225, OR RESTON, VIRGINIA 22092
AND DIVISION OF GEOLOGY AND LAND SURVEY
MISSOURI DEPARTMENT OF NATURAL RESOURCES, ROLLA, MISSOURI 65401
A FOLDER DESCRIBING TOPOGRAPHIC MAPS AND SYMBOLS IS AVAILABLE ON REQUEST

ROAD CLASSIFICATION

Primary highway, hard surface Light-duty road, hard or improved surface
Secondary highway, hard surface Unimproved road
Interstate Route U. S. Route State Route



FILLEY, MO.
37093-G8-TF-024

1991

DMA 7259 IV SW-SERIES V879