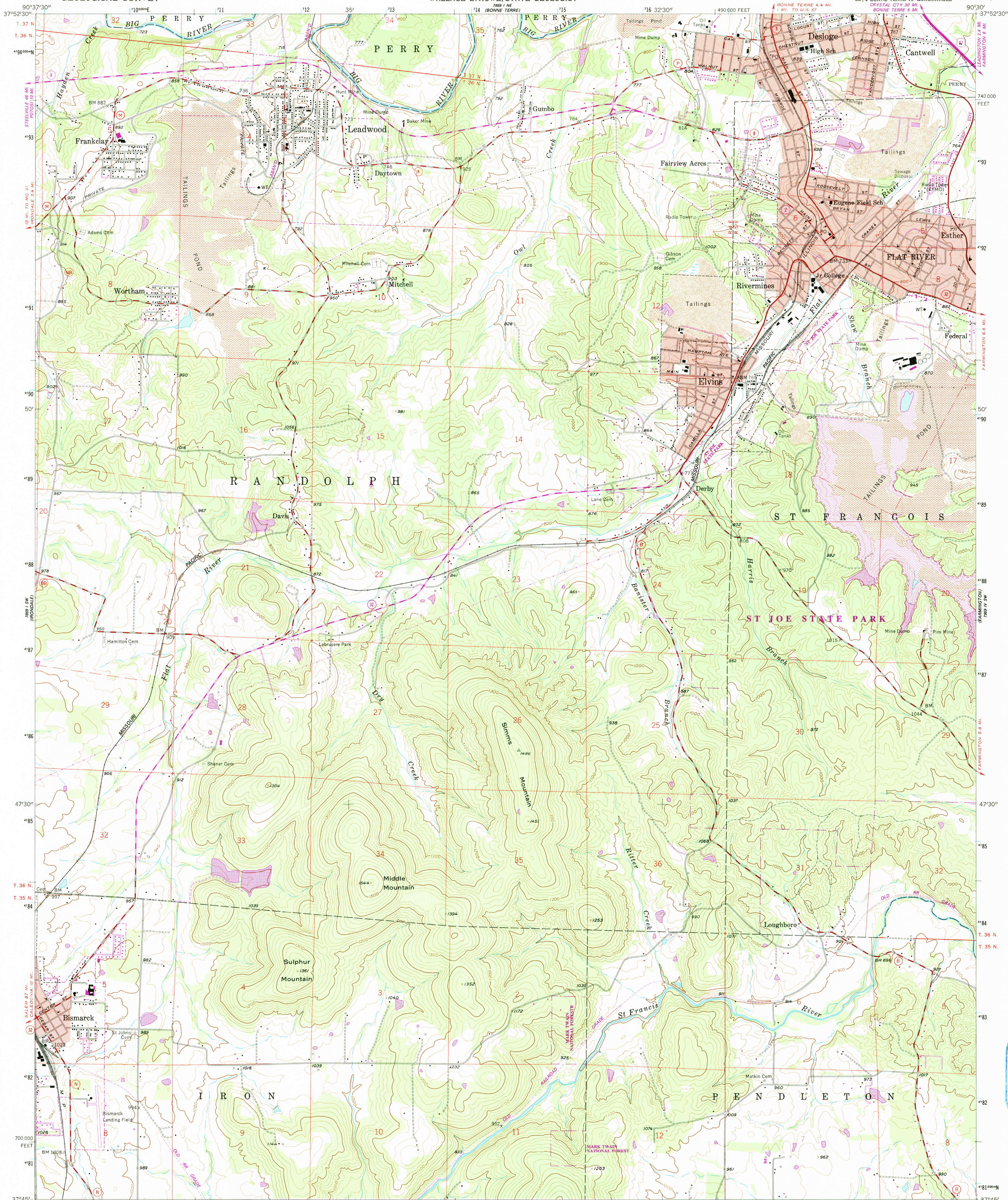


UNITED STATES  
DEPARTMENT OF THE INTERIOR  
GEOLOGICAL SURVEY

STATE OF MISSOURI  
DEPARTMENT OF NATURAL RESOURCES  
WALLACE B. HOWE, STATE GEOLOGIST

FLAT RIVER QUADRANGLE  
MISSOURI—ST. FRANCOIS CO.  
7.5 MINUTE SERIES (TOPOGRAPHIC)  
SE 1/4 BONNE TERRE 15' QUADRANGLE



Mapped, edited, and published by the Geological Survey

Control by USGS and USC&GS

Topography from aerial photographs by multiplex methods

Aerial photographs taken 1954. Field check 1958

Polyconic projection. 1927 North American datum

10,000-foot grid based on Missouri coordinate system, east zone

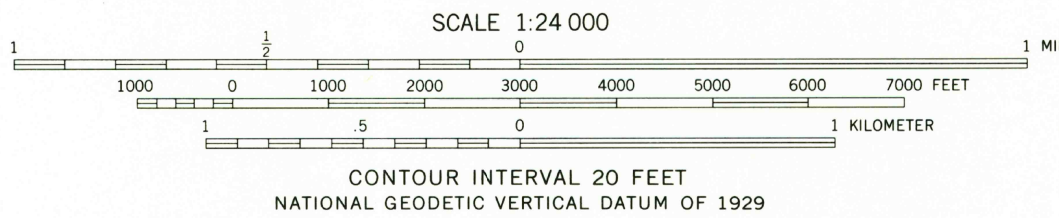
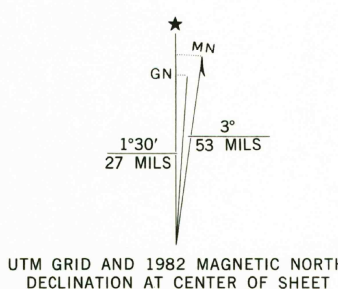
1000-meter Universal Transverse Mercator grid ticks, zone 15, shown in blue

Red tint indicates areas in which only landmark buildings are shown

To place on the predicted North American Datum 1983

move the projection lines 2 meters south and 10 meters east as shown by dashed corner ticks

There may be private inholdings within the boundaries of the National or State reservations shown on this map



THIS MAP COMPLIES WITH NATIONAL MAP ACCURACY STANDARDS  
FOR SALE BY U. S. GEOLOGICAL SURVEY, DENVER, COLORADO 80225, OR RESTON, VIRGINIA 22092,  
AND THE DIVISION OF GEOLOGY AND LAND SURVEY  
MISSOURI DEPARTMENT OF NATURAL RESOURCES, ROLLA, MISSOURI 65401  
A FOLDER DESCRIBING TOPOGRAPHIC MAPS AND SYMBOLS IS AVAILABLE ON REQUEST



Revisions shown in purple  
photographs taken 1980. Map edited 1982  
This information not field checked

ROAD CLASSIFICATION  
Primary highway, hard surface  
Secondary highway, hard surface  
Unimproved road  
Interstate Route  
U. S. Route  
State Route

FLAT RIVER, MO.  
SE 1/4 BONNE TERRE 15' QUADRANGLE  
37090-65-TF-024  
1958  
PHOTOREVISED 1982  
DMA 7859 1 SE-SERIES V879

USE AND INSPECTION  
SEP 6 1991  
REC'D FILE COPY