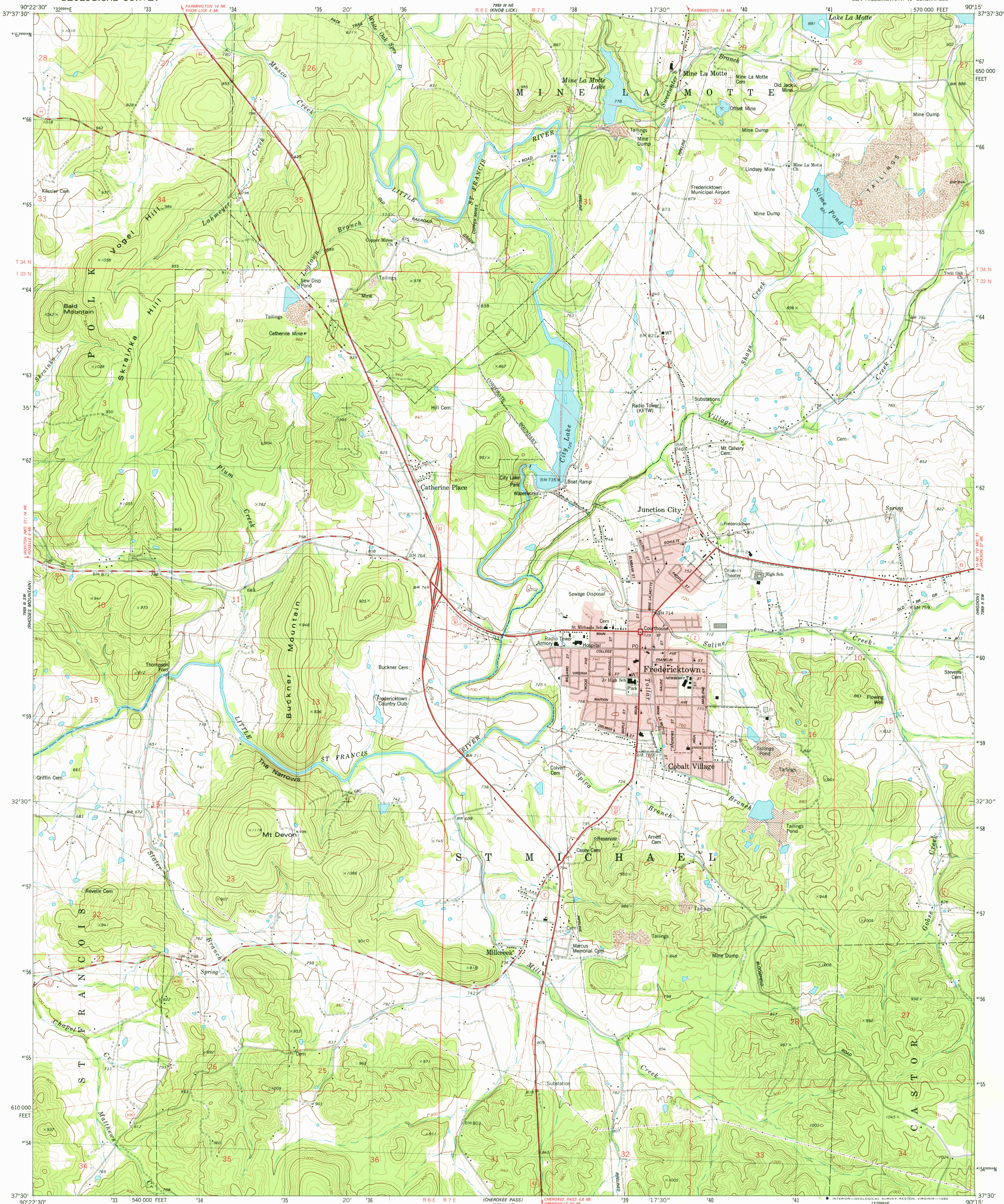
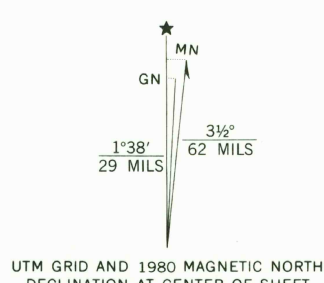


UNITED STATES
DEPARTMENT OF THE INTERIOR
GEOLOGICAL SURVEY

FREDERICKTOWN QUADRANGLE
MISSOURI-MADISON CO.
7.5 MINUTE SERIES (TOPOGRAPHIC)
8E/4 FREDERICKTOWN 15' QUADRANGLE



Mapped, edited, and published by the Geological Survey
Control by USGS and NOS/NOAA
Topography by photogrammetric methods from aerial photographs
taken 1974. Field checked 1976. Map edited 1980
Projection and 10,000-foot grid ticks: Missouri coordinate
system, east zone (transverse Mercator)
1000-meter Universal Transverse Mercator grid, zone 15
1927 North American Datum
To place on the predicted North American Datum 1983
move the projection lines 3 meters south and
9 meters east as shown by dashed corner ticks
Red tint indicates area in which only landmark buildings are shown
Fine red dashed lines indicate selected fence and field lines where
generally visible on aerial photographs. This information is unchecked



SCALE 1:24 000
1 1000 2000 3000 4000 5000 6000 7000 FEET
1 5 10 15 20 KILOMETER
CONTOUR INTERVAL 20 FEET
NATIONAL GEODETIC VERTICAL DATUM OF 1929

THIS MAP COMPLIES WITH NATIONAL MAP ACCURACY STANDARDS
FOR SALE BY U. S. GEOLOGICAL SURVEY, DENVER, COLORADO 80225, OR RESTON, VIRGINIA 22092,
AND THE DIVISION OF GEOLOGY AND LAND SURVEY
MISSOURI DEPARTMENT OF NATURAL RESOURCES, ROLLA, MISSOURI 65401
A FOLDER DESCRIBING TOPOGRAPHIC MAPS AND SYMBOLS IS AVAILABLE ON REQUEST



ROAD CLASSIFICATION
Primary highway, hard surface
Secondary highway, hard surface
Interstate Route
Light duty road, hard or improved surface
Unimproved road
U. S. Route
State Route
USGS
Historical File
Topographic Division
FREDERICKTOWN, MO.
8E/4 FREDERICKTOWN 15' QUADRANGLE
N3730-W9015/7.5
1980
DMA 7959 III SE-SERIES V879

AUG 15 1980

1650