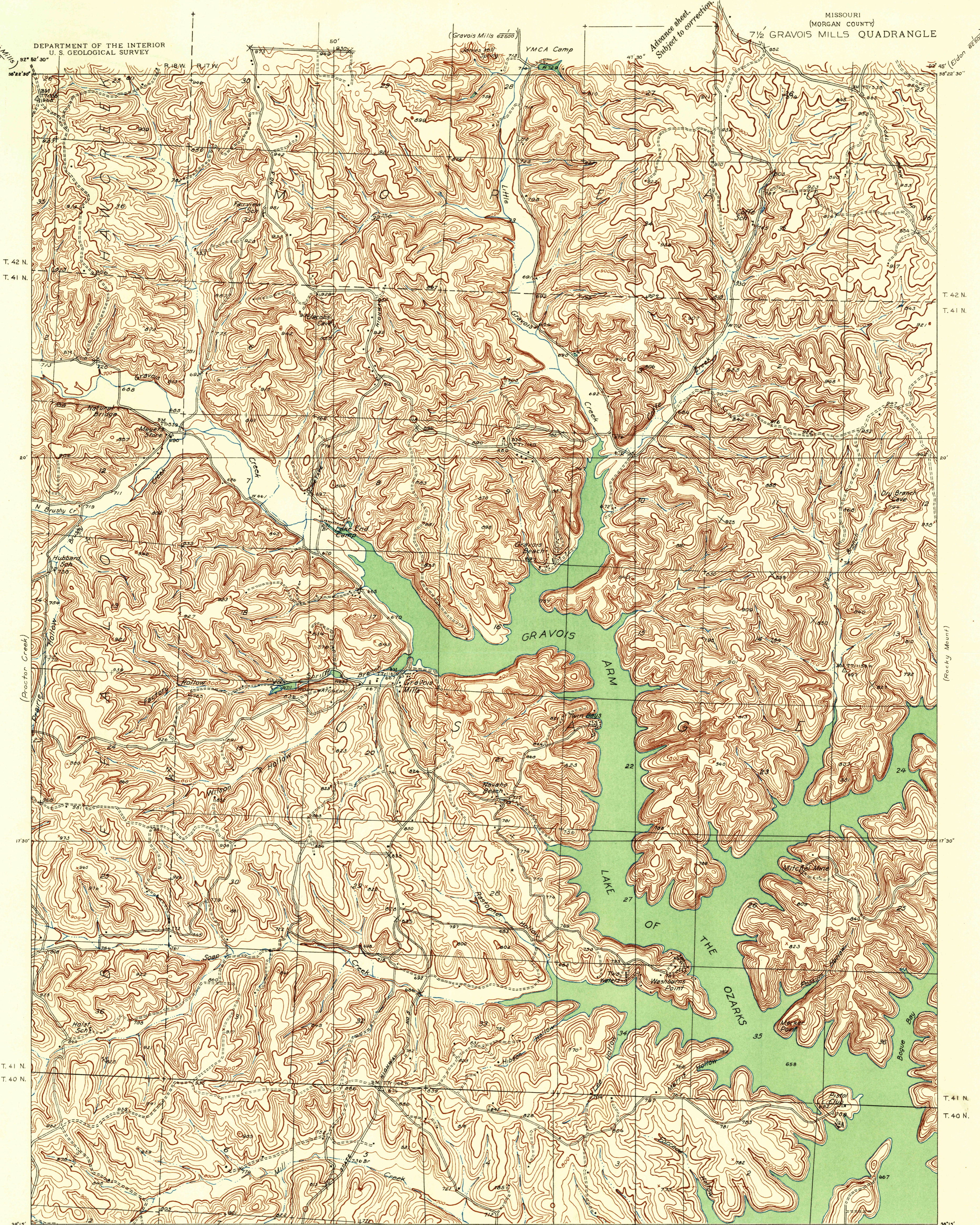


DEPARTMENT OF THE INTERIOR  
U. S. GEOLOGICAL SURVEY

MISSOURI  
(MORGAN COUNTY)  
7 1/2 GRAVOIS MILLS QUADRANGLE



T. 42 N.  
T. 41 N.

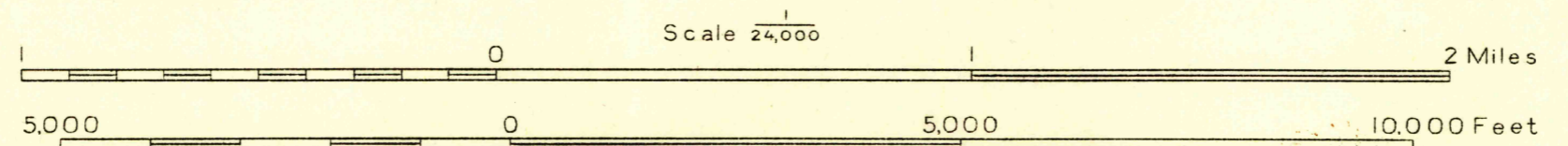
T. 42 N.  
T. 41 N.

T. 41 N.  
T. 40 N.

T. 41 N.  
T. 40 N.

Glenn S. Smith, Division Engineer  
Topography by J. B. Leachman  
C. W. Mc Caw and M. G. Handy  
Control by U. S. Geological Survey  
Surveyed in 1935

TRUE NORTH  
MAGNETIC NORTH  
APPROXIMATE MEAN  
DECLINATION, 1985



Contour interval 20 feet  
Datum is mean sea level

USGS  
Historical File  
Topographic Division

W. G. H. #19
C. W. Mc Caw
M. G. Handy

Polyconic projection. 1927 North American datum

7 1/2 GRAVOIS MILLS, MO.