

(Barnumton)

DEPARTMENT OF THE INTERIOR
U. S. GEOLOGICAL SURVEY

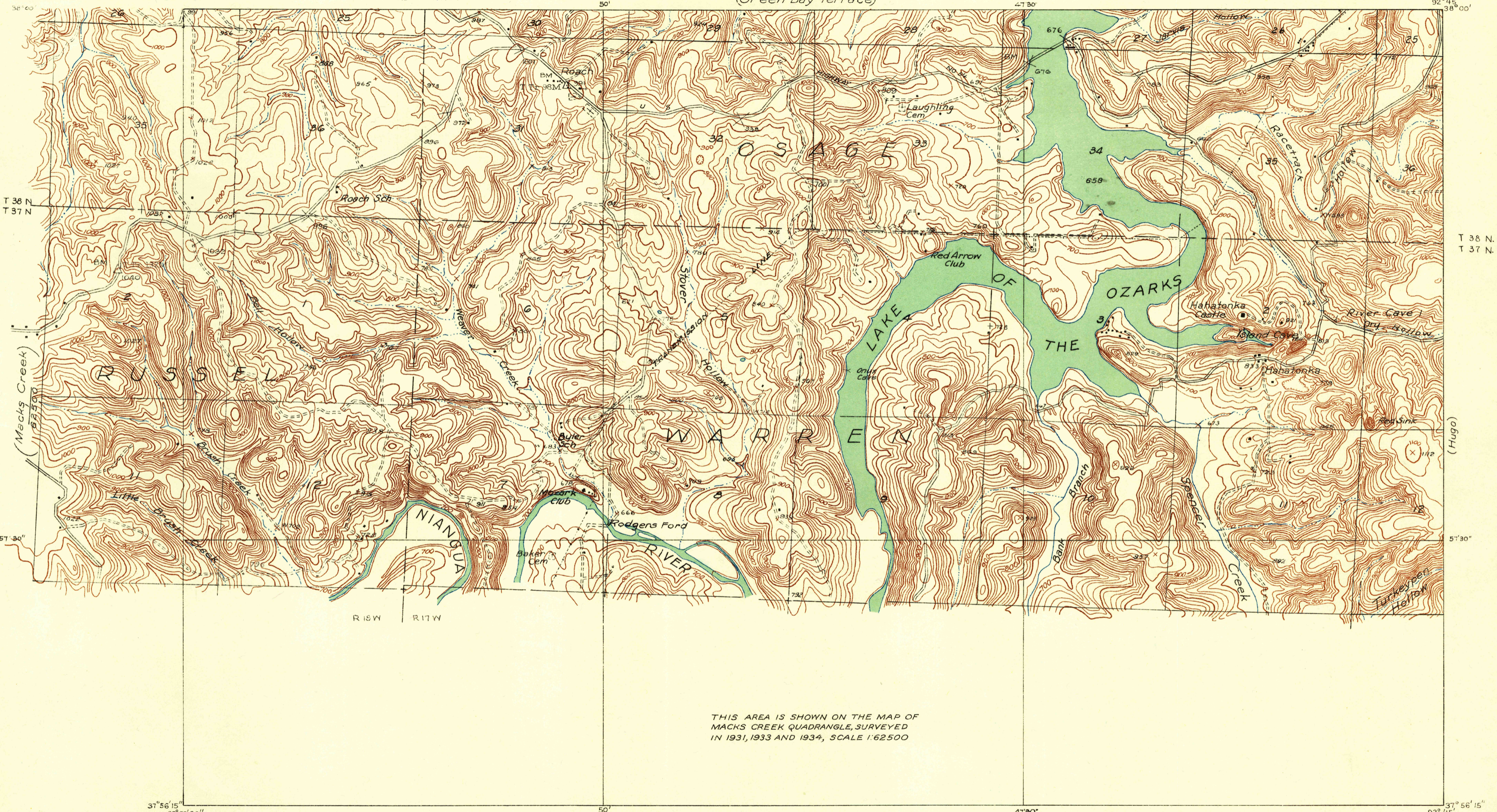
STATE OF MISSOURI
GEOLOGICAL SURVEY AND WATER RESOURCES
H. A. BUEHLER, STATE GEOLOGIST

Advance sheet
Subject to correction

U. S. G. S.
FILE COPY
Inspection and Editing.

MISSOURI
(CAMDEN COUNTY)
HAHATONKA QUADRANGLE

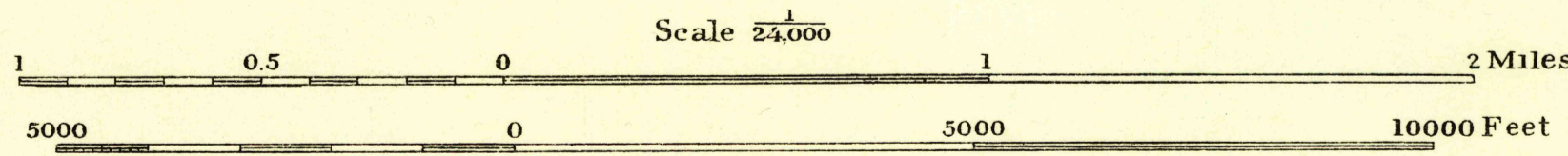
(Camdenton)



THIS AREA IS SHOWN ON THE MAP OF
MACKS CREEK QUADRANGLE, SURVEYED
IN 1931, 1933 AND 1934, SCALE 1:62500

Glenn S. Smith, Division Engineer
Topography by J. P. Ryden
Control by U. S. Geological Survey
Surveyed in 1934

TRUE NORTH
7 1/2
MAGNETIC NORTH
APPROXIMATE MEAN
DECLINATION, 1934



Contour interval 20 feet
Datum is mean sea level

USGS Polyconic projection, 1927 North American datum
Historical File
Topographic Division

HAHATONKA, MO.