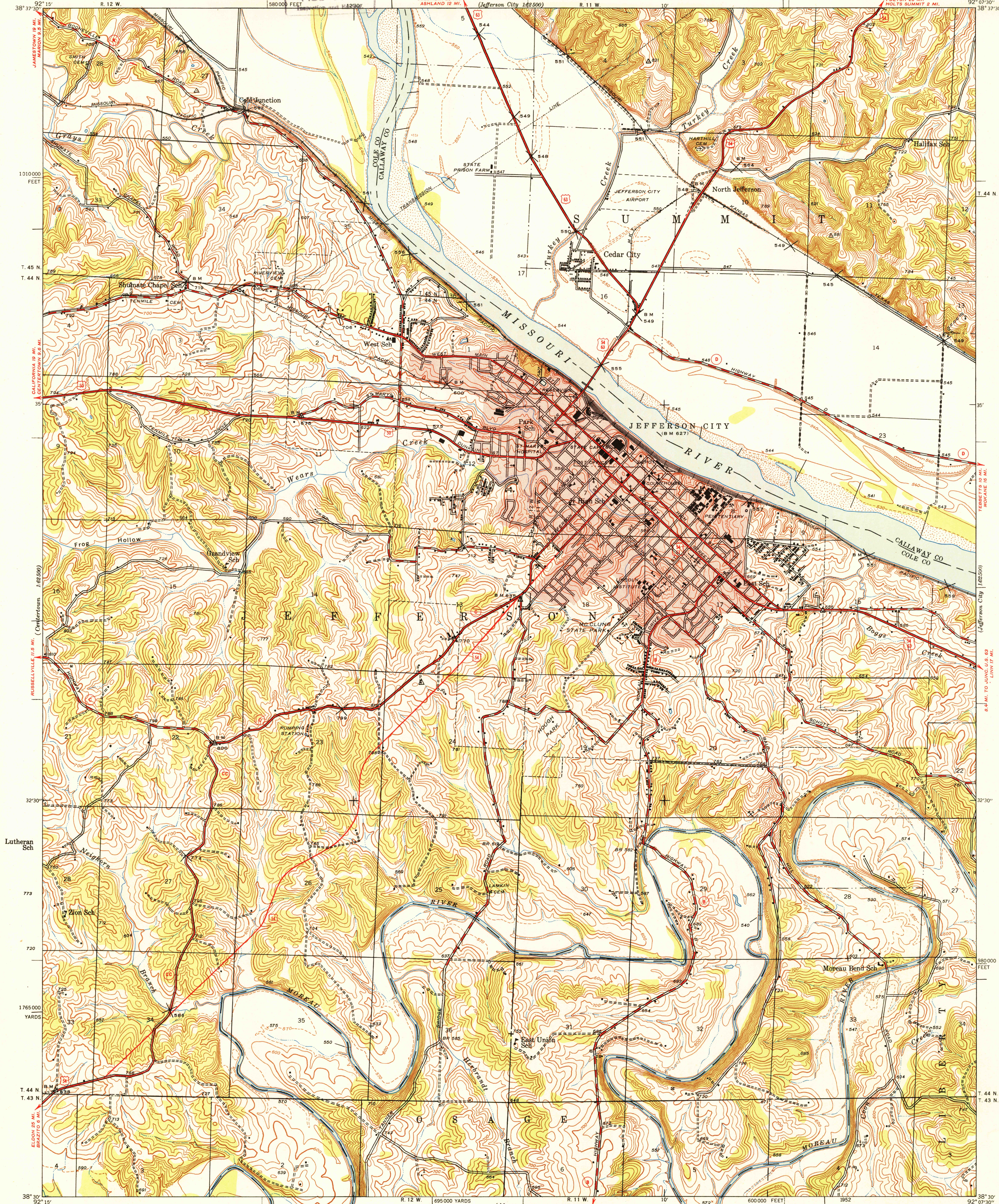


UNITED STATES
DEPARTMENT OF THE INTERIOR
GEOLOGICAL SURVEY

STATE OF MISSOURI
GEOLOGICAL SURVEY AND WATER RESOURCES

MISSOURI
JEFFERSON CITY QUADRANGLE

U.S.G.S.
FILE COPY



Topography by T. F. Murphy, W. E. Baird, S. S. Evans,
J. T. Schultz, C. A. Killian, W. P. Metcalfe, and T. A. Magee
Culture and drainage in part compiled from aerial photographs
Surveyed in 1930 and 1939

Red tint indicates areas in which only
landmark buildings are shown

ROAD CLASSIFICATION
Heavy-duty ——— 4 LANE 16 LANE Light-duty ———
Medium-duty ——— 4 LANE 16 LANE Unimproved dirt ———
U. S. Route State Route

TRUE NORTH
MAGNETIC NORTH
APPROXIMATE MEAN
DECLINATION, 1939

SCALE 1:24000
1000 0 1000 2000 3000 4000 5000 6000 7000 FEET
1 5 0 1 KILOMETER

Contour interval 20 feet
10 foot contours added in dashed lines
Datum is mean sea level

FOR SALE BY U. S. GEOLOGICAL SURVEY, FEDERAL CENTER, DENVER, COLORADO OR WASHINGTON 25, D. C.
A FOLDER DESCRIBING TOPOGRAPHIC MAPS AND SYMBOLS IS AVAILABLE ON REQUEST

U.S.G.S.
FILE COPY
Inspection and Editing

Polyconic projection. 1927 North American datum
5000 yard grid based on U. S. zone system, C
10000 foot grid based on Missouri (Central)
rectangular coordinate system

JEFFERSON CITY, MO.
1939
N 3830-W 9207.5/7.5