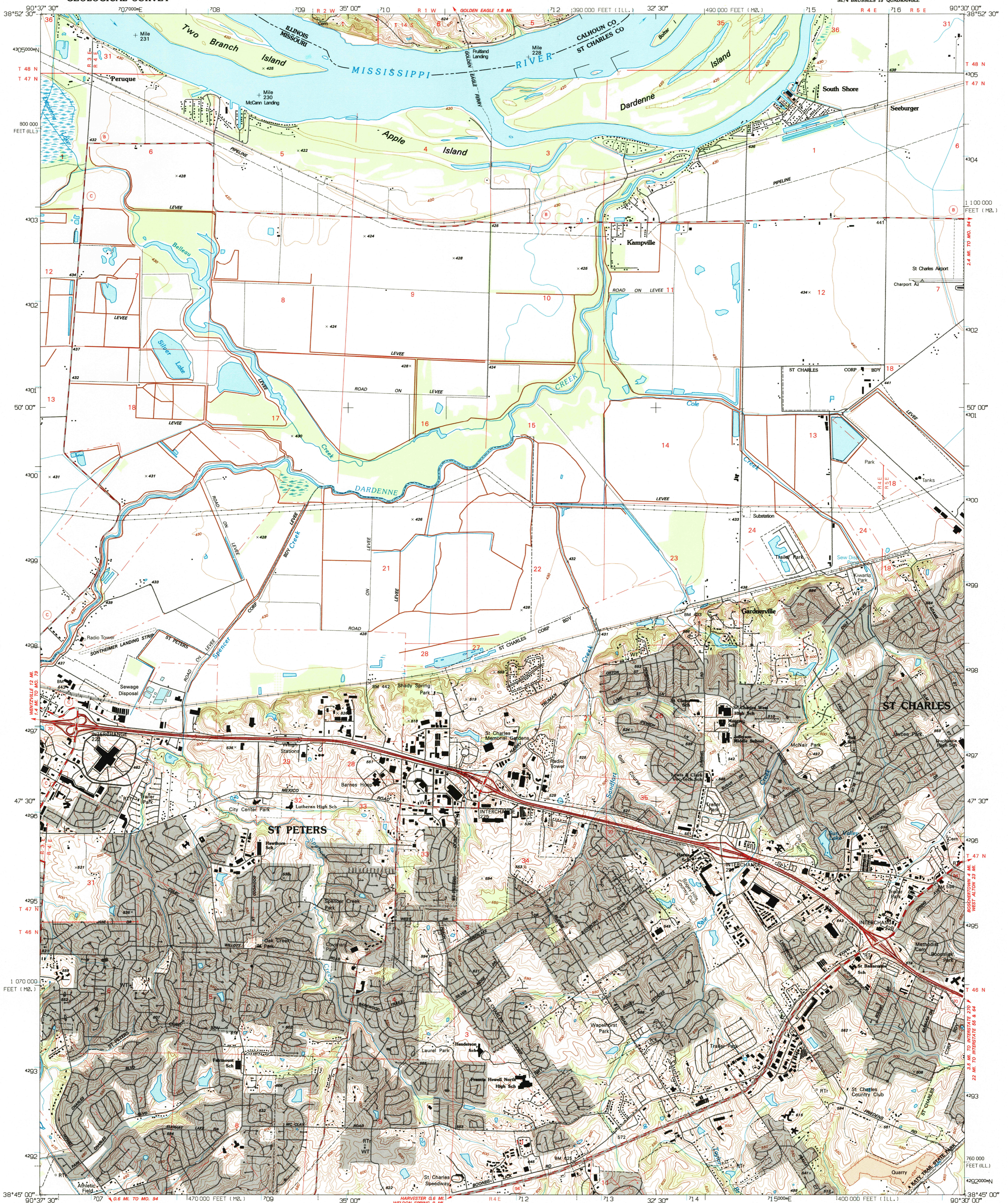


UNITED STATES
DEPARTMENT OF THE INTERIOR
GEOLOGICAL SURVEY

KAMPVILLE QUADRANGLE
MISSOURI-ILLINOIS
7.5 MINUTE SERIES (TOPOGRAPHIC)



Produced by the United States Geological Survey

Control by USGS and NOS/NOAA

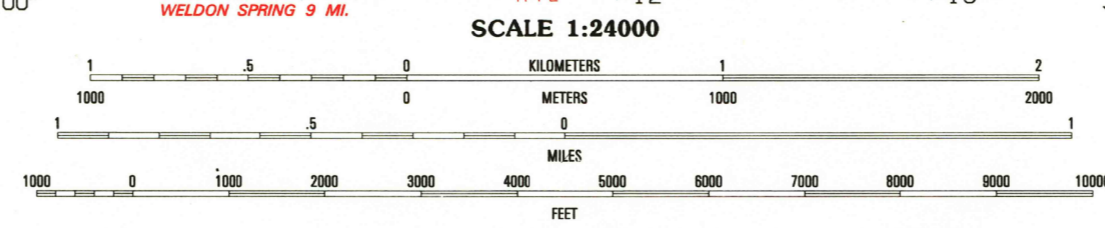
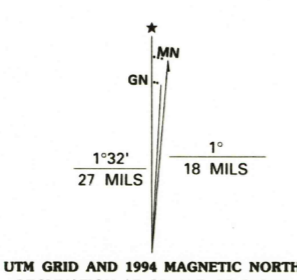
Topography by photogrammetric methods from aerial photographs taken 1952. Revised from aerial photographs taken 1990. Field checked 1993. Map edited 1994.

Universal Transverse Mercator projection
10,000-foot grid ticks: Missouri coordinate system, east zone and Illinois coordinate system, west zone
1000-meter Universal Transverse Mercator grid ticks, zone 15, shown in blue
1927 North American Datum (NAD 27)

North American Datum of 1983 (NAD 83) is shown by dashed corner ticks. The values of the shift between NAD 27 and 83 for 7.5-minute intersections are given in USGS Bulletin 1875.

There may be private inholdings within the boundaries of the National or State reservations shown on this map.

Gray tint indicates areas in which only landmark buildings are shown.



CONTOUR INTERVAL 10 FEET
NATIONAL GEODETIC VERTICAL DATUM OF 1929

COMPLIES WITH U.S. GEOLOGICAL SURVEY STANDARDS FOR SPATIAL ACCURACY - CLASS 2
FOR SALE BY U.S. GEOLOGICAL SURVEY, DENVER, COLORADO 80225, OR RESTON, VIRGINIA 22092
AND DIVISION OF GEOLOGY AND LAND SURVEY
MISSOURI DEPARTMENT OF NATURAL RESOURCES, ROLLA, MISSOURI 65401
AND ILLINOIS GEOLOGICAL SURVEY, CHAMPAIGN, ILLINOIS 61820
A FOLDER DESCRIBING TOPOGRAPHIC MAPS AND SYMBOLS IS AVAILABLE ON REQUEST



QUADRANGLE LOCATION

1	2	3	1 Winfield
4	5	6	2 Brussels
7	8	9	3 Grafton
			4 O'Fallon
			5 St. Charles
			6 Weldon Spring
			7 Chesterfield
			8 Creve Coeur

ADJOINING 7.5' QUADRANGLE NAMES

ROAD CLASSIFICATION
Primary highway
hard surface
Secondary highway
hard surface
Light-duty road, hard or
improved surface
Unimproved road
Interstate Route
U.S. Route
State Route

KAMPVILLE, MO.-ILL.
SE/4 BRUSSELS 15' QUADRANGLE
38090-G5-TF-024
1994

DMA 7861 I SE - SERIES V879

