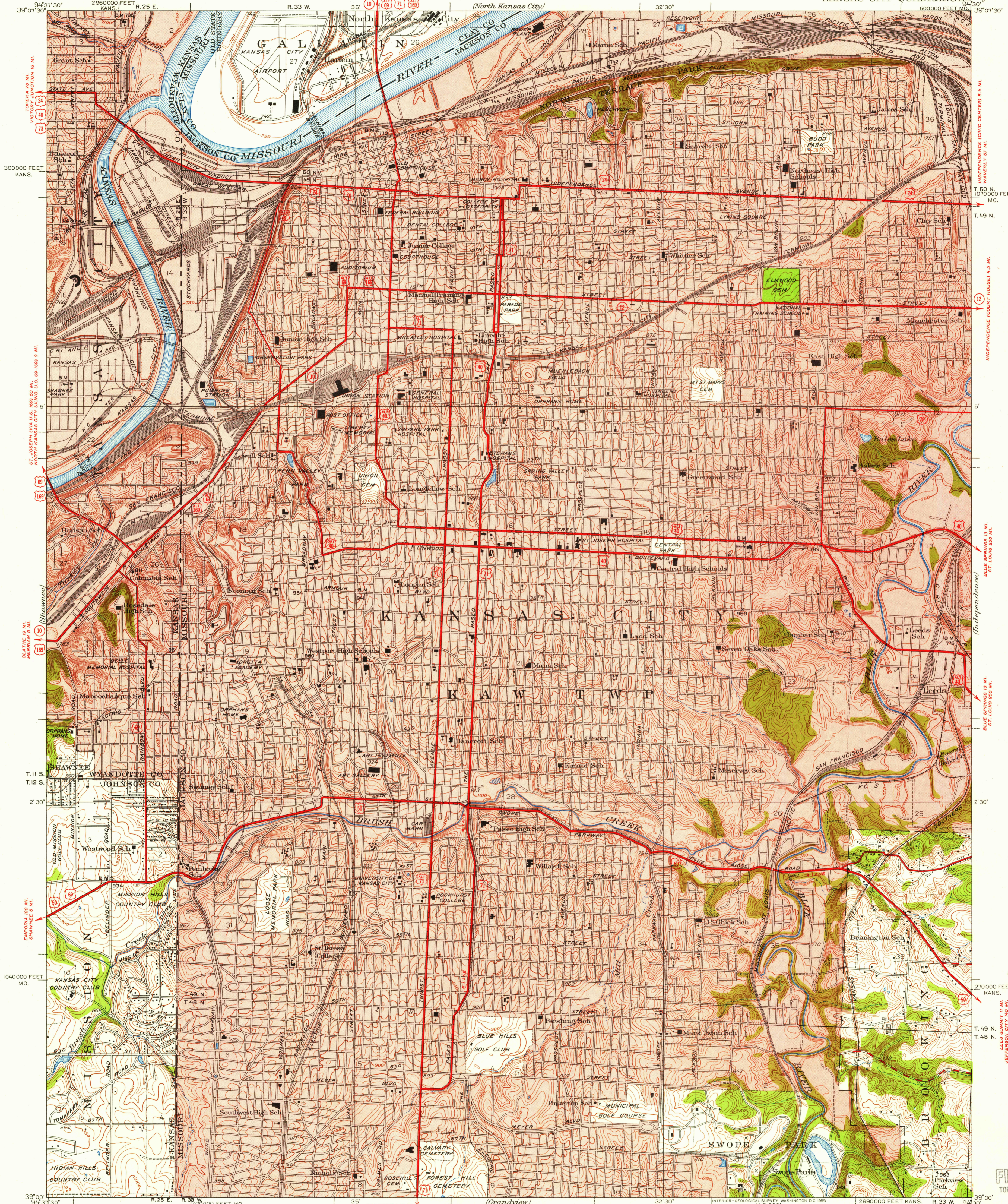


UNITED STATES  
DEPARTMENT OF THE INTERIOR  
GEOLOGICAL SURVEY

MISSOURI-KANSAS  
KANSAS CITY QUADRANGLE

U.S.G.S.  
FILE CO  
TOPOGRAPHIC DIV



ROAD CLASSIFICATION  
Heavy-duty ——— 4 LANE 6 LANE Light-duty ———  
Medium-duty ——— 4 LANE 6 LANE Unimproved dirt ———  
U. S. Route      State Route

SCALE 1:24000  
Contour interval 10 feet  
Datum is mean sea level

Topography by F.W. Hughes and C.A. Killian  
Surveyed in 1934-1935  
Red tint indicates areas in which only  
landmark buildings are shown

KANSAS CITY, MO-KANS.  
N3900-W9430/15  
1935

FOR SALE BY U.S. GEOLOGICAL SURVEY, FEDERAL CENTER, DENVER, COLORADO OR WASHINGTON 25, D.C.  
THE MISSOURI GEOLOGICAL SURVEY, ROLLA, MISSOURI  
AND BY THE STATE GEOLOGICAL SURVEY, LAWRENCE, KANSAS  
A FOLDER DESCRIBING TOPOGRAPHIC MAPS AND SYMBOLS IS AVAILABLE ON REQUEST

USGS Library  
Reston, VA  
Topo Archive

U.S.G.S.  
FILE COPY  
TOPOGRAPHIC DIVISION

JUN 11 1955

1535