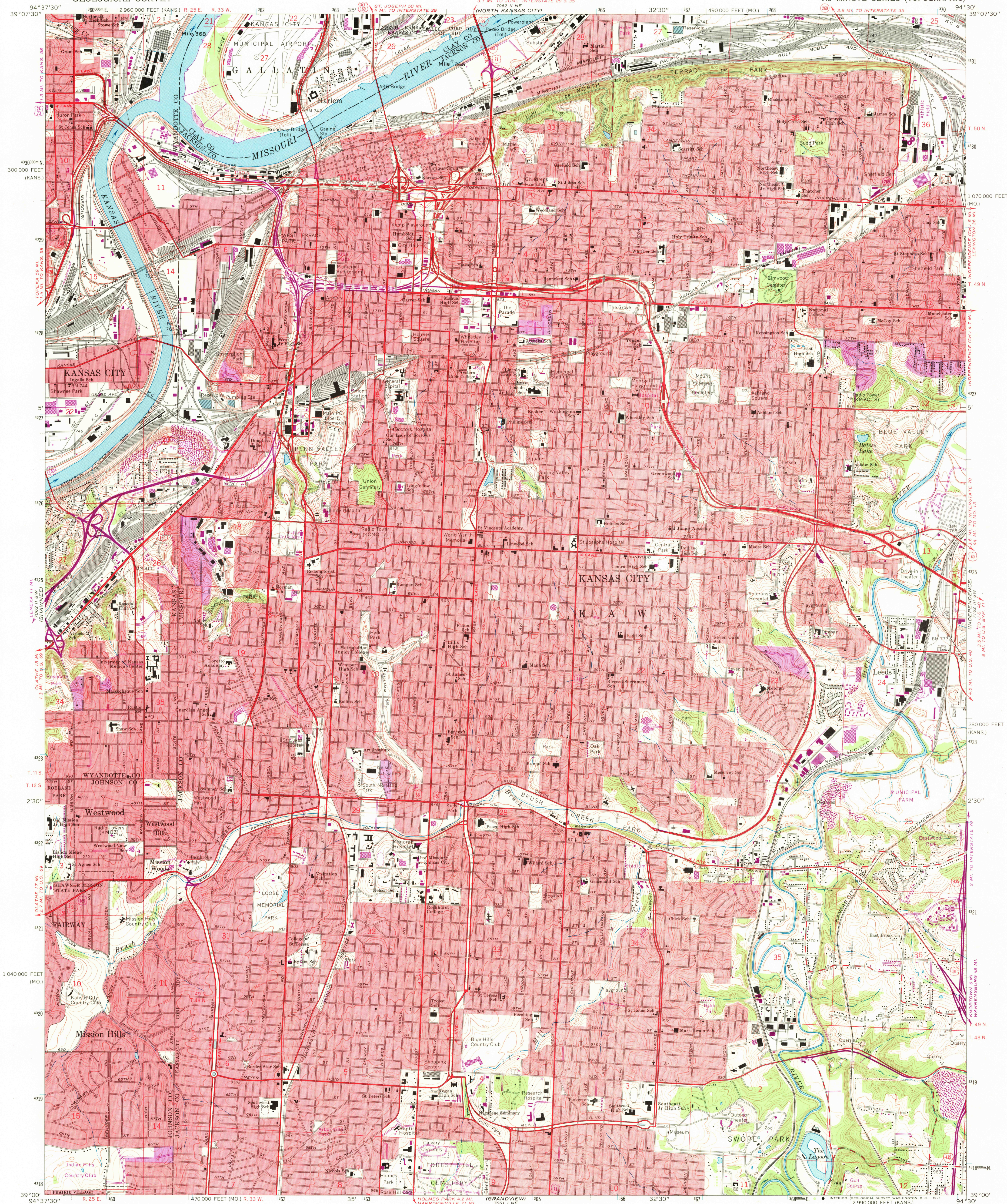


UNITED STATES
DEPARTMENT OF THE INTERIOR
GEOLOGICAL SURVEY

KANSAS CITY QUADRANGLE
MISSOURI-KANSAS
7.5 MINUTE SERIES (TOPOGRAPHIC)



Maped, edited, and published by the Geological Survey

Control by USGS, USC&GS, and USCE

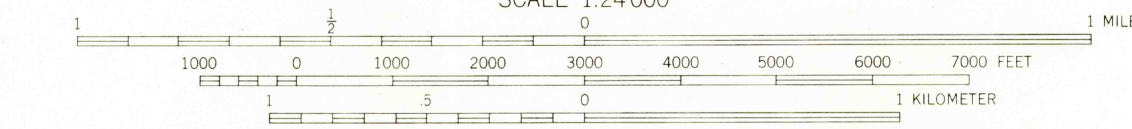
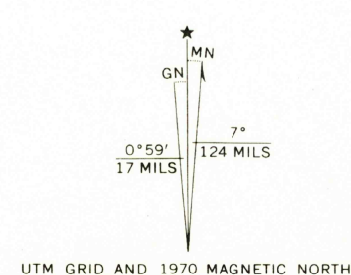
Planimetry by photogrammetric methods from aerial photographs taken 1955. Topography by planimetric surveys 1934-35. Revised 1964

Polyconic projection. 1927 North American datum 10,000-foot grids based on Missouri coordinate system, west zone and Kansas coordinate system, north zone 1000-meter Universal Transverse Mercator grid ticks, zone 15, shown in blue

Red tint indicates areas in which only landmark buildings are shown

Revisions shown in purple compiled from aerial photographs taken 1970. This information not field checked

Purple tint indicates extension of urban areas

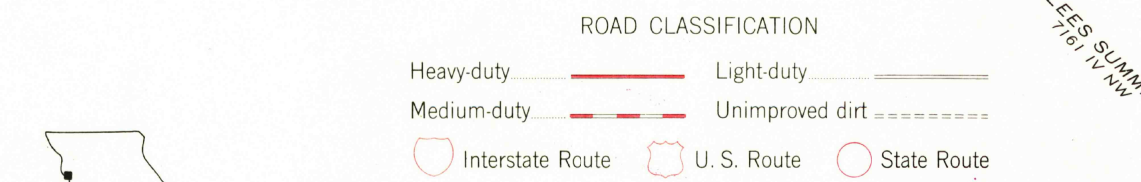


CONTOUR INTERVAL 10 FEET
DATUM IS MEAN SEA LEVEL

THIS MAP COMPLIES WITH NATIONAL MAP ACCURACY STANDARDS
FOR SALE BY U.S. GEOLOGICAL SURVEY, DENVER, COLORADO 80225, OR WASHINGTON, D.C. 20242.

MISSOURI GEOLOGICAL SURVEY, ROLLA, MISSOURI 65401
AND STATE GEOLOGICAL SURVEY, LAWRENCE, KANSAS 66044

A FOLDER DESCRIBING TOPOGRAPHIC MAPS AND SYMBOLS IS AVAILABLE ON REQUEST



ROAD CLASSIFICATION
Heavy-duty Medium-duty Light-duty Unimproved dirt
Interstate Route U.S. Route State Route

MISSOURI
QUADRANGLE LOCATION

KANSAS CITY, MO.-KANS.
N3900-W9430/7.5

1964
PHOTOREVISED 1970
AMS 7062 II SE-SERIES V879

NOV 1 1971