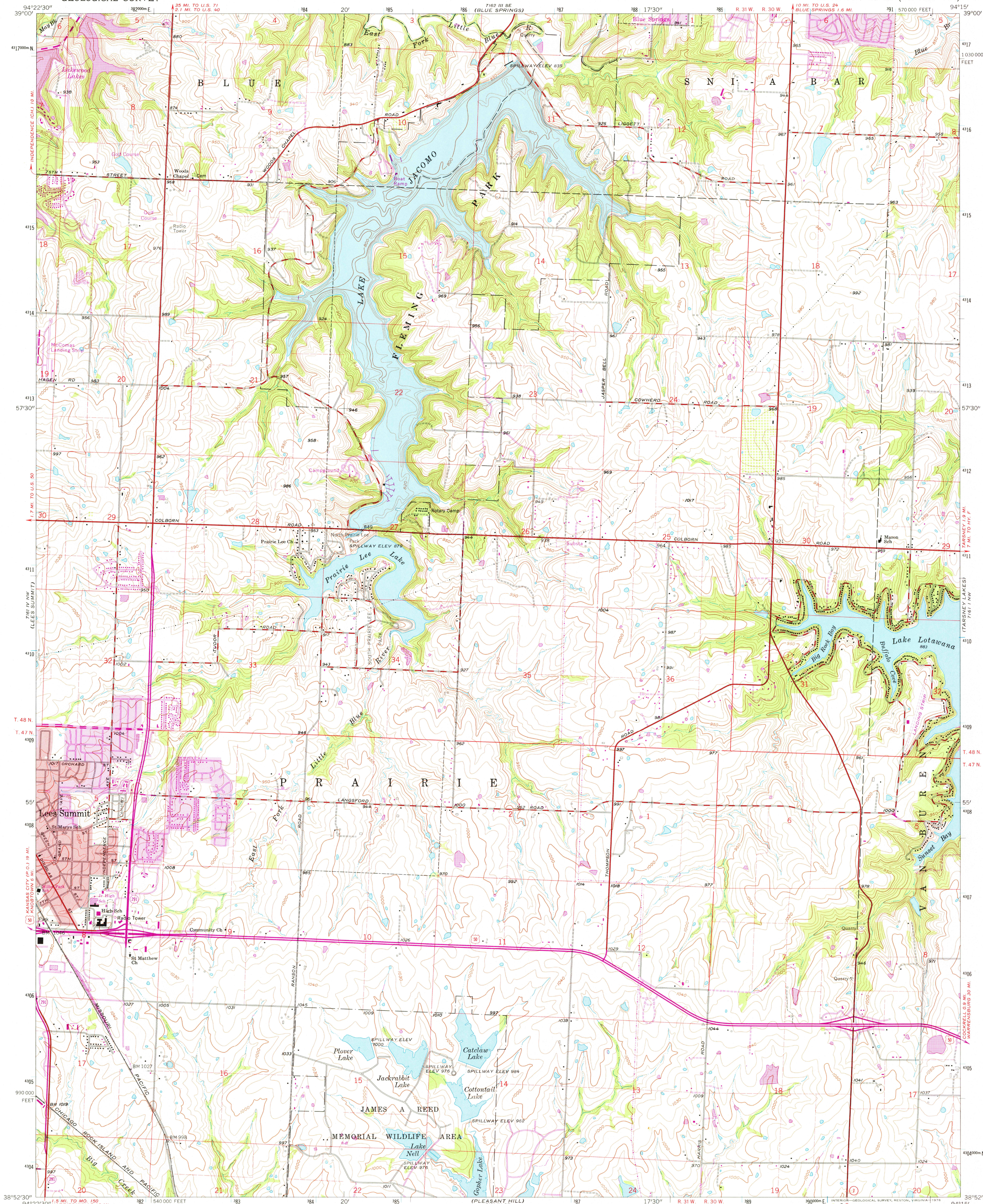
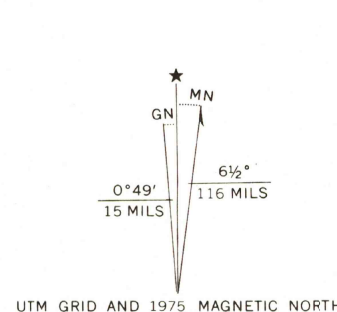


UNITED STATES
DEPARTMENT OF THE INTERIOR
GEOLOGICAL SURVEY

LAKE JACOMO QUADRANGLE
MISSOURI-JACKSON CO.
7.5 MINUTE SERIES (TOPOGRAPHIC)



Maped, edited, and published by the Geological Survey
in cooperation with State of Missouri, Geological Survey
and Water Resources
Control by USGS and USC&GS
Planimetry by photogrammetric methods from aerial photographs
taken 1955. Topography by planetable surveys 1934. Revised 1963
Polyconic projection. 1927 North American datum
10,000-foot grid based on Missouri coordinate system, west zone
1000 metre Universal Transverse Mercator grid ticks,
zone 15, shown in blue
Red tint indicates area in which only landmark buildings are shown
Fine red dashed lines indicate selected fence and field lines where
generally visible on aerial photographs. This information is unchecked



CONTOUR INTERVAL 10 FEET
NATIONAL GEODETIC VERTICAL DATUM OF 1929
THIS MAP COMPLIES WITH NATIONAL MAP ACCURACY STANDARDS
FOR SALE BY U.S. GEOLOGICAL SURVEY, DENVER, COLORADO 80225, OR RESTON, VIRGINIA 22092
AND BY THE DIVISION OF RESEARCH AND TECHNICAL INFORMATION
MISSOURI DEPARTMENT OF NATURAL RESOURCES, ROLLA, MISSOURI 65401
A FOLDER DESCRIBING TOPOGRAPHIC MAPS AND SYMBOLS IS AVAILABLE ON REQUEST

ROAD CLASSIFICATION
Heavy-duty ——— Light-duty ———
Medium-duty ——— Unimproved dirt ———
U.S. Route ——— State Route ———
U.S.S. Historical File
Topographic Division
LAKE JACOMO, MO.
N3852.5-W9415.75
1963
PHOTOREVISED 1970 AND 1975
AMS 7161 IV NE-SERIES V879

JUN 13 1977
3300