

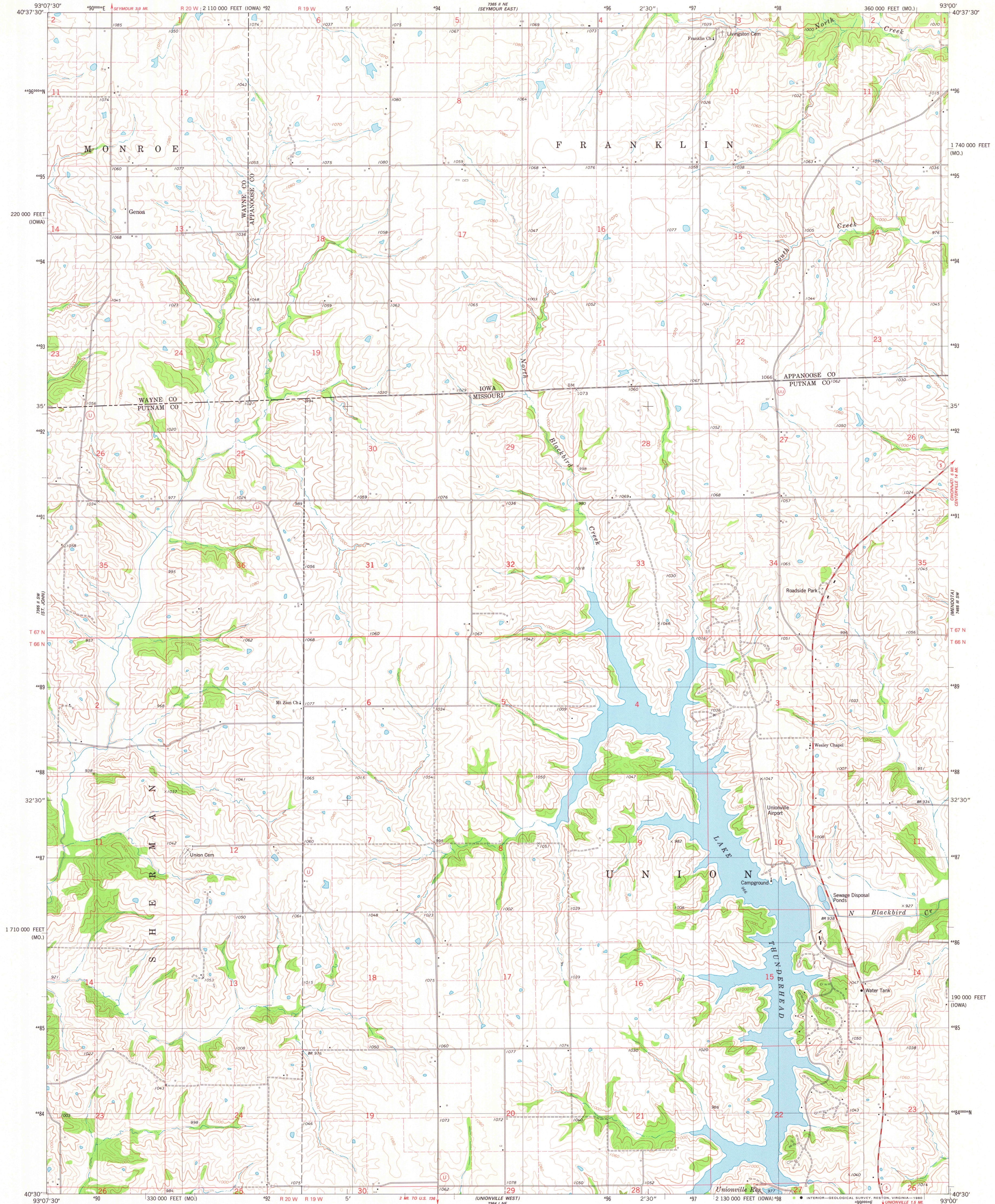
746 III NW
(SEYMOUR WEST)

UNITED STATES
DEPARTMENT OF THE INTERIOR
GEOLOGICAL SURVEY

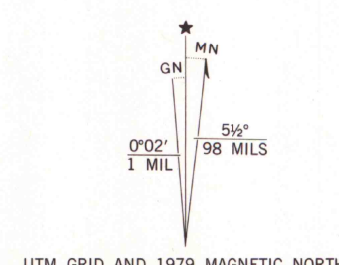


LAKE THUNDERHEAD QUADRANGLE
MISSOURI-IOWA
7.5 MINUTE SERIES (TOPOGRAPHIC)
SE 1/4 SEYMOUR 15' QUADRANGLE

746 III NE
(CENTERVILLE WEST)



Mapped, edited, and published by the Geological Survey
Control by USGS and NOS/NOAA
Topography by photogrammetric methods from aerial photographs
taken 1974. Field checked 1976. Map edited 1979
Projection: Missouri coordinate system, central zone
(transverse Mercator)
10,000-foot grid ticks based on Missouri coordinate
system, central zone and Iowa coordinate system, south zone
1000-meter Universal Transverse Mercator grid, zone 15
1927 North American datum
To place on the predicted North American Datum 1983
move the projection lines 2 meters north and
16 meters east as shown by dashed corner ticks
Fine red dashed lines indicate selected fence and field lines where
generally visible on aerial photographs. This information is unchecked



SCALE 1:24 000
1 000 0 1000 2000 3000 4000 5000 6000 7000 FEET
1 KILOMETER
CONTOUR INTERVAL 20 FEET
DOTTED LINES REPRESENT 10-FOOT CONTOURS
NATIONAL GEODETIC VERTICAL DATUM OF 1929
THIS MAP COMPLIES WITH NATIONAL MAP ACCURACY STANDARDS
FOR SALE BY U. S. GEOLOGICAL SURVEY, DENVER, COLORADO 80225, OR RESTON, VIRGINIA 22092,
AND THE DIVISION OF GEOLOGY AND LAND SURVEY
MISSOURI DEPARTMENT OF NATURAL RESOURCES, ROLLA, MISSOURI 65401
AND IOWA GEOLOGICAL SURVEY, IOWA CITY, IOWA 52240
A FOLDER DESCRIBING TOPOGRAPHIC MAPS AND SYMBOLS IS AVAILABLE ON REQUEST



ROAD CLASSIFICATION
Primary highway, hard surface ———— Light-duty road, hard or improved surface ————
Secondary highway, hard surface ———— Unimproved road ————
Interstate Route U. S. Route State Route
LAKE THUNDERHEAD, MO.-IOWA
SE 1/4 SEYMOUR 15' QUADRANGLE
N4030-W9300/7.5
1979
DMA 7365 II SE-SERIES V879

MAP AND AIR PHOTO
LIBRARY
FEB 20 1980
University of Wisconsin
Madison