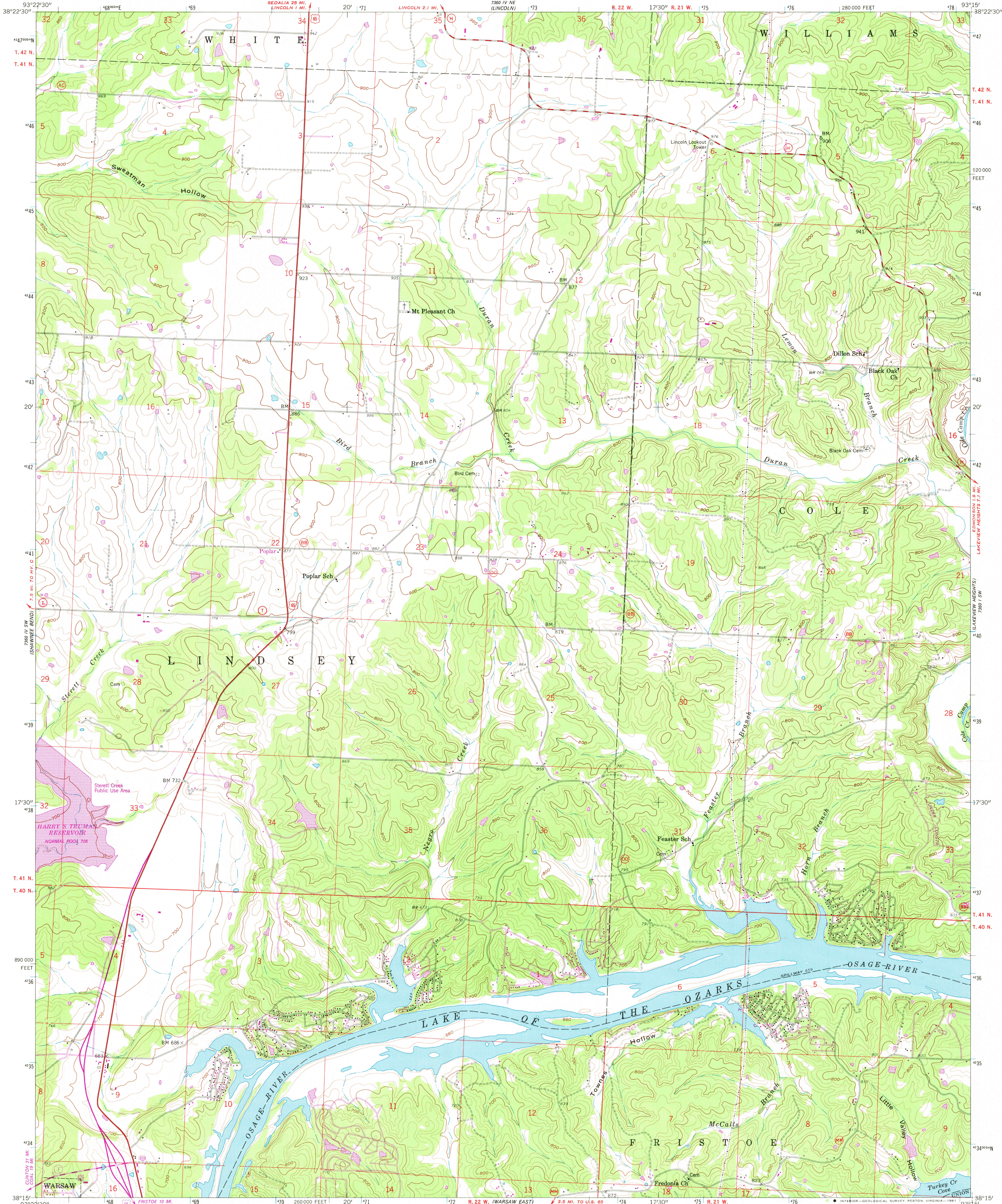


UNITED STATES
DEPARTMENT OF THE INTERIOR
GEOLOGICAL SURVEY

LINCOLN SE QUADRANGLE
MISSOURI—BENTON CO.
7.5 MINUTE SERIES (TOPOGRAPHIC)



Mapped, edited, and published by the Geological Survey

Control by USGS and USC&GS

Culture and drainage in part compiled from aerial photographs taken 1958. Topography by planetable surveys 1935-1936. Revised 1959

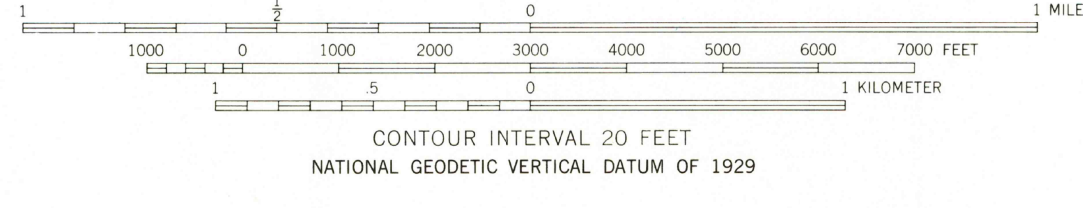
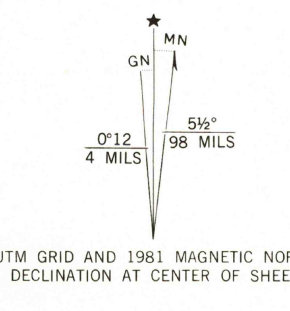
Polyconic projection. 1927 North American datum

10,000-foot grid based on Missouri coordinate system, central zone

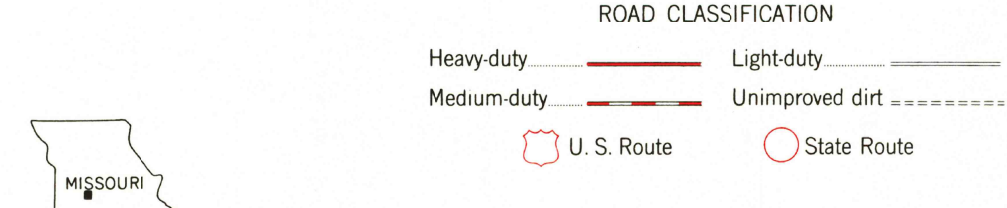
1000-meter Universal Transverse Mercator grid ticks, zone 15, shown in blue

To place on the predicted North American Datum 1983 move the projection lines 17 meters east as shown by dashed corner ticks

Revisions shown in purple compiled from aerial photographs taken 1979-80. Map edited 1981. This information not field checked



THIS MAP COMPLIES WITH NATIONAL MAP ACCURACY STANDARDS
FOR SALE BY U. S. GEOLOGICAL SURVEY, DENVER, COLORADO 80225, OR RESTON, VIRGINIA 22092,
AND THE DIVISION OF GEOLOGY AND LAND SURVEY
MISSOURI DEPARTMENT OF NATURAL RESOURCES, ROLLA, MISSOURI 65401
A FOLDER DESCRIBING TOPOGRAPHIC MAPS AND SYMBOLS IS AVAILABLE ON REQUEST



USGS
HISTORICAL FILE
NATIONAL MAPPING DIVISION

LINCOLN SE, MO.

N 3815-W 9315/7.5

1959
PHOTOREVISED 1981
DMA 7560 IV SE—SERIES V679

JUL 23 1981
1950