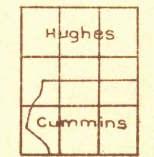


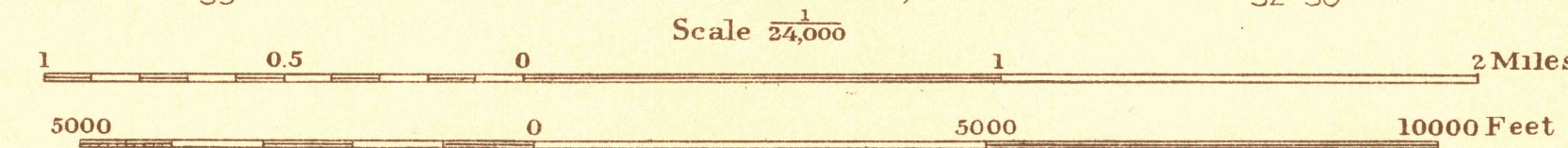
Advance sheet
Subject to correction



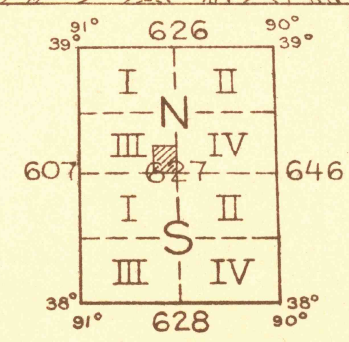
Glenn S. Smith, Division Engineer
Topography by F.W. Hughes and T.V. Cummins
Culture and drainage in part compiled from aerial photographs
taken by Air Corps, U. S. Army
Control by U. S. Geological Survey and
U. S. Coast and Geodetic Survey
Surveyed in 1931



APPROXIMATE MEAN
DECLINATION, 1931



Contour interval 20 feet
10 foot contours added in dashed lines
Datum is mean sea level



Polygonic projection, North American datum

USGS
Historical File
Topographic Division

MANCHESTER SE 1/4, MO.