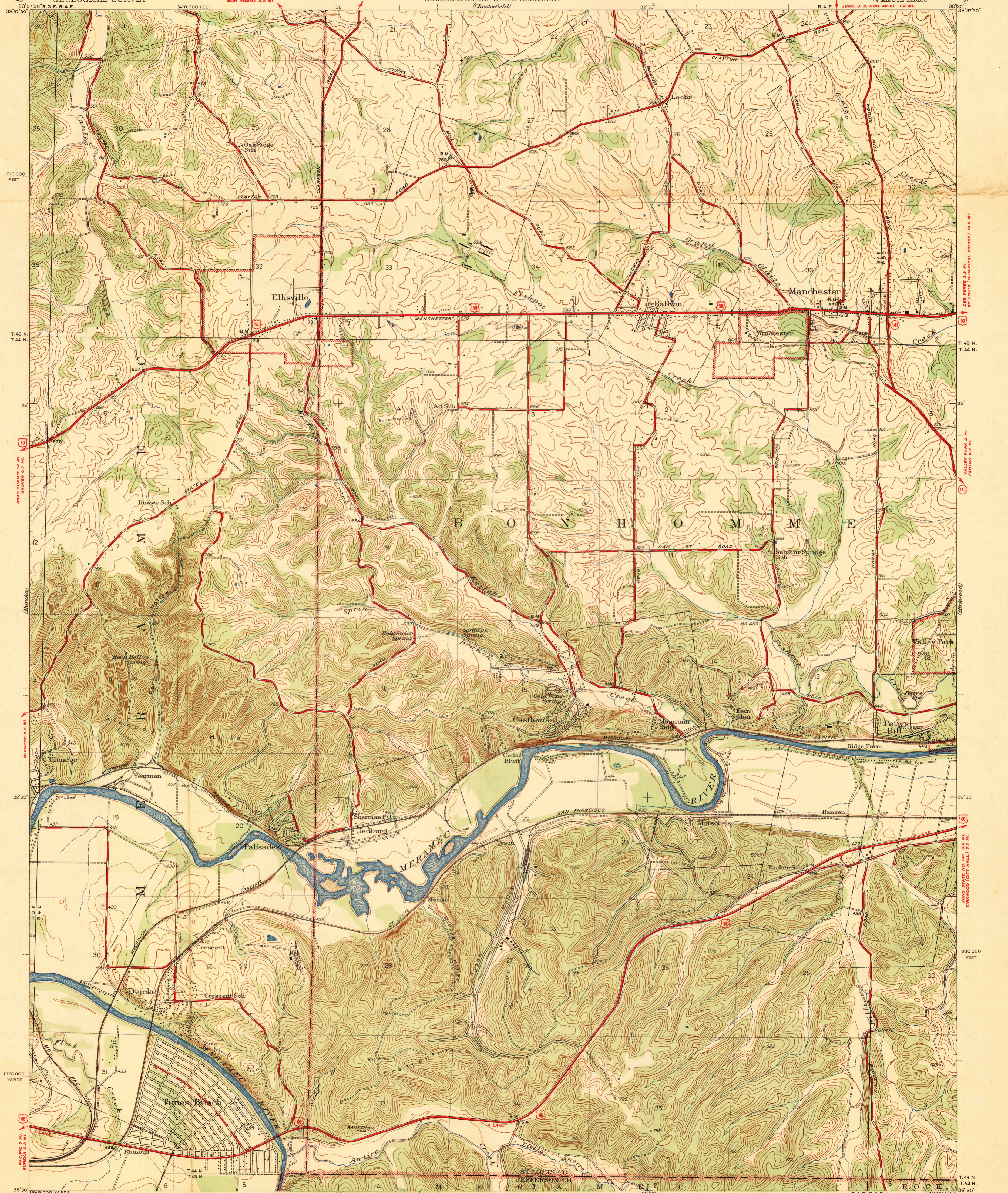


U.S.G.S.
FILE COPY
Inspection and Editing.

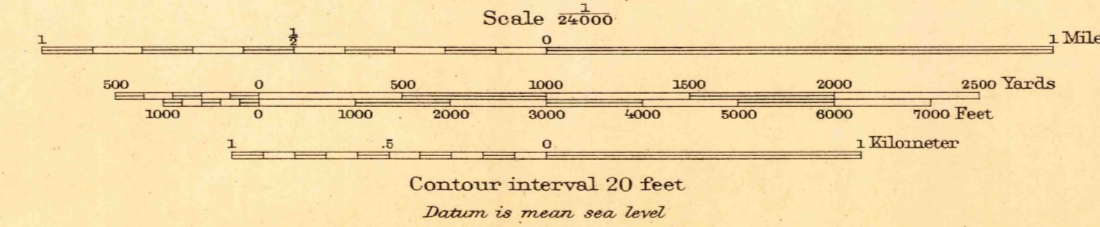


Mapped by the Geological Survey
1931 and 1945

ROAD CLASSIFICATION

Dependable hard surface	1042	By weather roads	U.S. Route (11)
Heavy-duty road	1043	Loose-surface graded	State Route (12)
Secondary hard surface	1044	Unimproved, graded	State Route (13)
At weather road	1045	Dirt road	State Route (14)
More than two lanes indicated along road with tick at point of change	1046	1 Lane & 2 Lane	

APPROXIMATE MEAN DECLINATION, 1945



USGS
Historical File
U.S.G.S. Topographic Division
FILE COPY
Inspection and Editing.

Polyconic projection 1927 North American datum
5000 yard grid based on U.S. zone system, C
10000 foot grid based on Missouri (East)
rectangular coordinate system

JUNC. STATE NO. 30 1.8 MI.
MANCHESTER, MO.
Edition of 1947
N3830-W9030/75