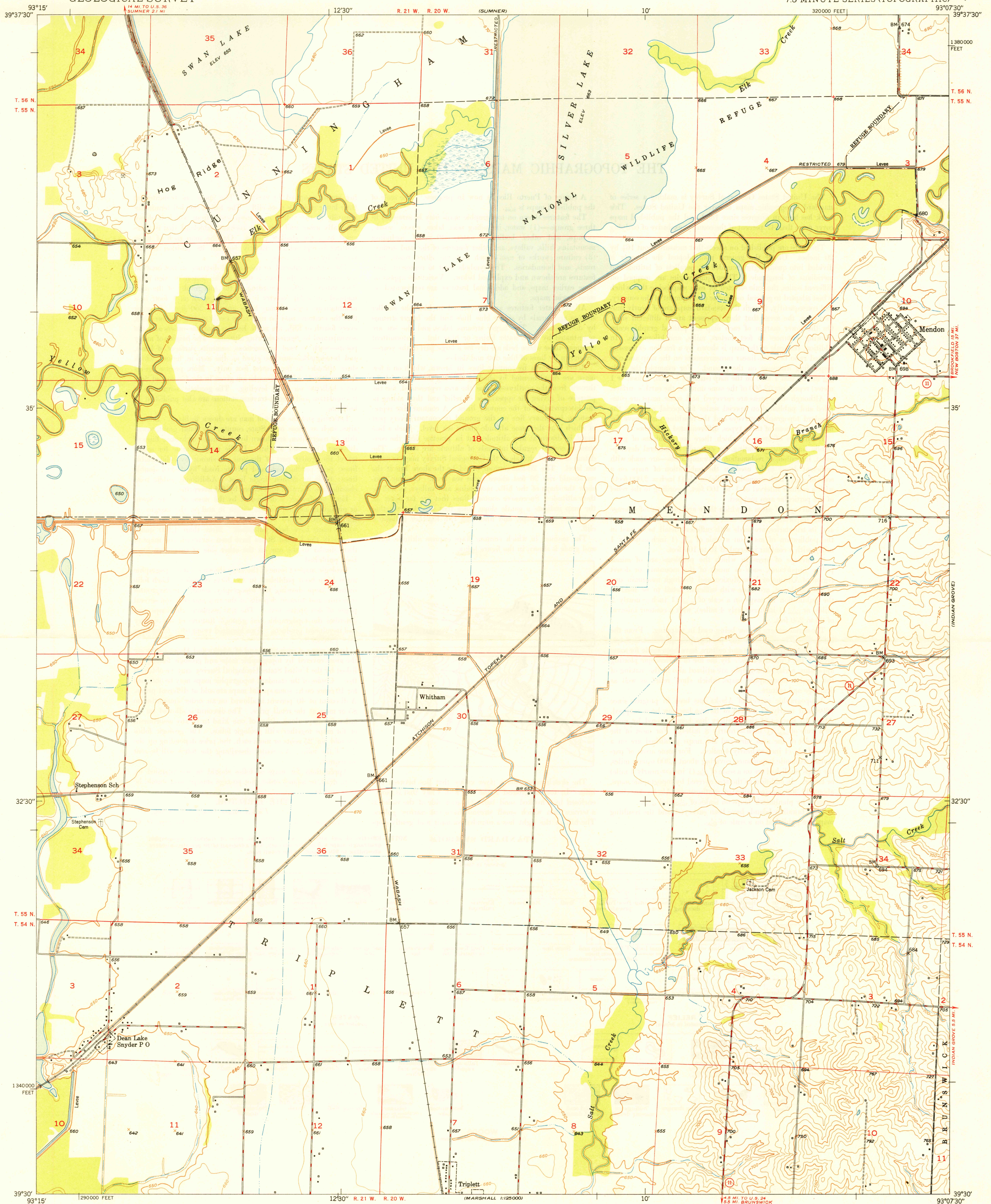


UNITED STATES
DEPARTMENT OF THE INTERIOR
GEOLOGICAL SURVEY

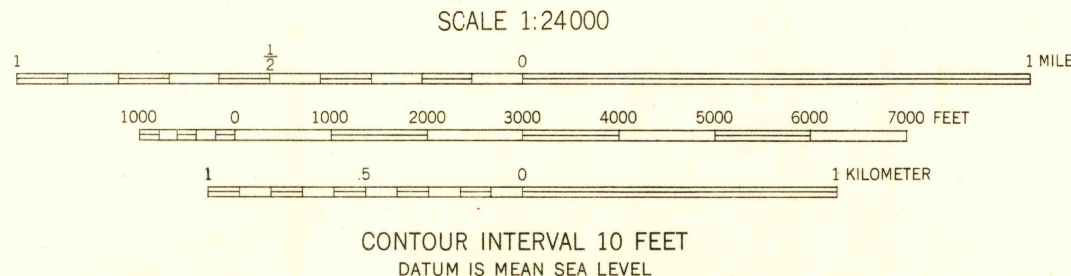
U.S.G.S.
FILE COPY
Inspection and Editing

MENDON QUADRANGLE
MISSOURI-CHARITON CO.
7.5 MINUTE SERIES (TOPOGRAPHIC)



Maped, edited and published by the Geological Survey
as part of the Department of the Interior program
for the development of the Missouri River Basin
Control by USGS and USC&GS
Culture and drainage in part compiled from
aerial photographs taken 1940
Topography by plane-table methods 1949
Polyconic projection. 1927 North American datum
10,000-foot grid based on Missouri coordinate system,
central zone

TRUE NORTH
MAGNETIC NORTH
APPROXIMATE MEAN
DECLINATION, 1949



USGS
Historical File
Topographic Division

ROAD CLASSIFICATION
HARD-SURFACE ALL WEATHER ROADS DRY WEATHER ROADS
Heavy-duty... LANE LANE Improved dirt...
Medium-duty... LANE LANE Unimproved dirt...
Loose-surface, graded, or narrow hard-surface...
U. S. Route State Route

U.S.G.S.
FILE COPY
Inspection and Editing

MENDON, MO.
N3930-W9307.5/7.5
EDITION OF 1949

THIS MAP COMPLIES WITH NATIONAL MAP ACCURACY STANDARDS
FOR SALE BY U. S. GEOLOGICAL SURVEY, DENVER, COLORADO OR WASHINGTON 25, D. C.

DEC 14 1949

2130