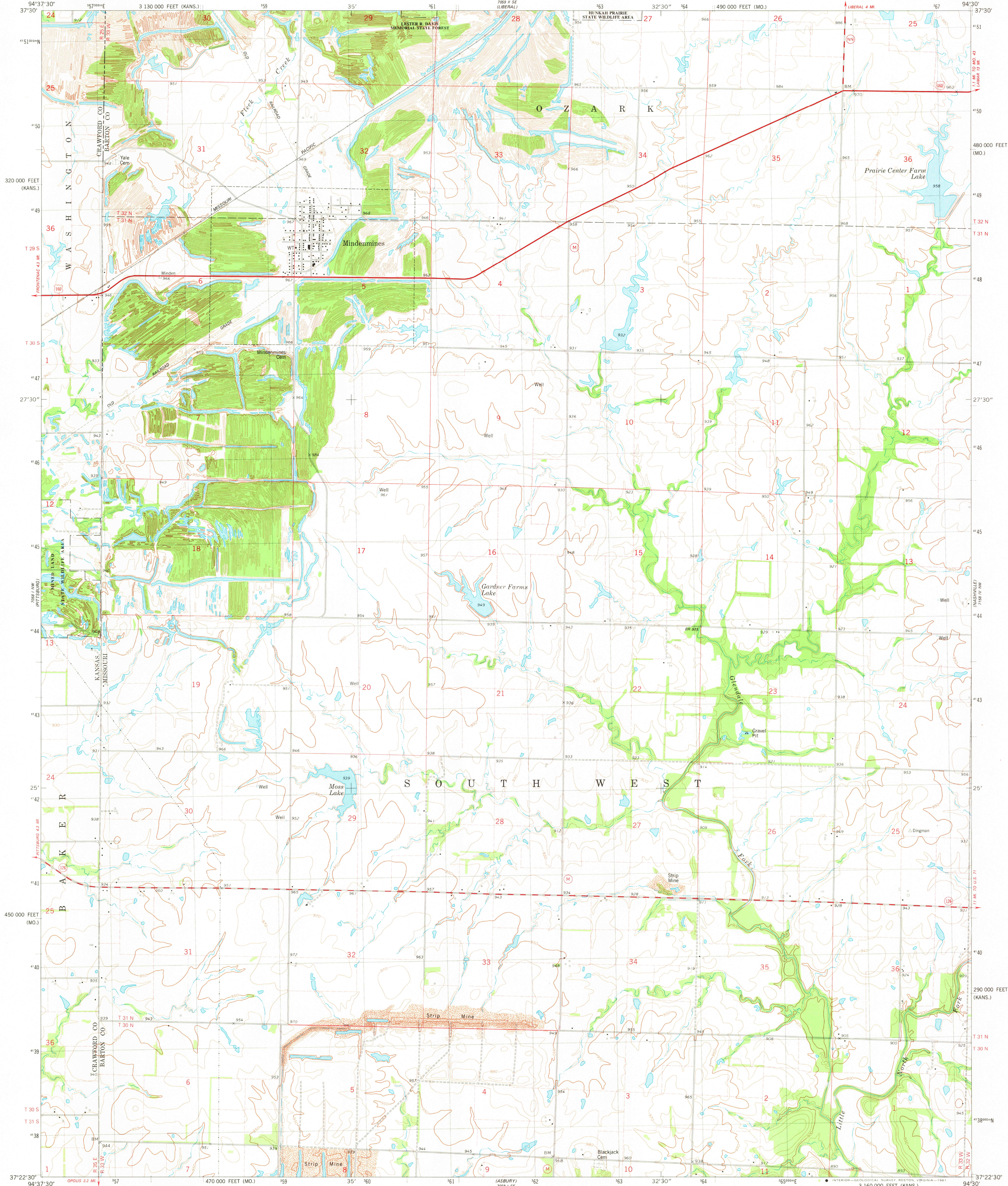


UNITED STATES  
DEPARTMENT OF THE INTERIOR  
GEOLOGICAL SURVEY

MINDENMINES QUADRANGLE  
MISSOURI-KANSAS  
7.5 MINUTE SERIES (TOPOGRAPHIC)  
NE 4 PITTSBURG 15' QUADRANGLE



Mapped, edited, and published by the Geological Survey

Control by USGS and NOS/NOAA

Topography by photogrammetric methods from aerial photographs taken 1978. Field checked 1979. Map edited 1981

Projection: Missouri coordinate system, west zone (transverse Mercator)

10,000-foot grid ticks based on Missouri coordinate system, west zone and Kansas coordinate system, south zone

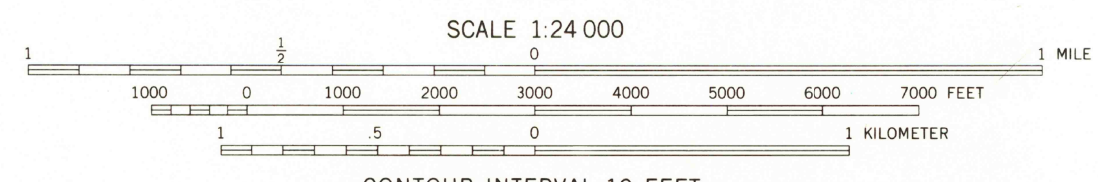
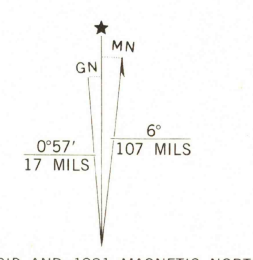
1000-meter Universal Transverse Mercator grid, zone 15

1927 North American Datum

To place on the predicted North American Datum 1983

move the projection lines 2 meters south and 20 meters east as shown by dashed corner ticks

There may be private inholdings within the boundaries of the National or State reservations shown on this map



THIS MAP COMPLIES WITH NATIONAL MAP ACCURACY STANDARDS  
FOR SALE BY U. S. GEOLOGICAL SURVEY, DENVER, COLORADO 80225, OR RESTON, VIRGINIA 22092,  
AND THE DIVISION OF GEOLOGY AND LAND SURVEY  
MISSOURI DEPARTMENT OF NATURAL RESOURCES, ROLLA, MISSOURI 65401  
AND STATE GEOLOGICAL SURVEY, LAWRENCE, KANSAS 66044  
A FOLDER DESCRIBING TOPOGRAPHIC MAPS AND SYMBOLS IS AVAILABLE ON REQUEST



Primary highway, hard surface	Light duty road, hard or improved surface
Secondary highway, hard surface	Unimproved road
Interstate Route	U. S. Route
	State Route

MINDENMINES, MO.-KANS.  
NE 4 PITTSBURG 15' QUADRANGLE  
N3722.5-W94307.5

USGS  
HISTORICAL FILE  
NATIONAL MAPPING DIVISION

1981  
DMA 7058 I NE-SERIES V879

JUN 29 1981  
2800