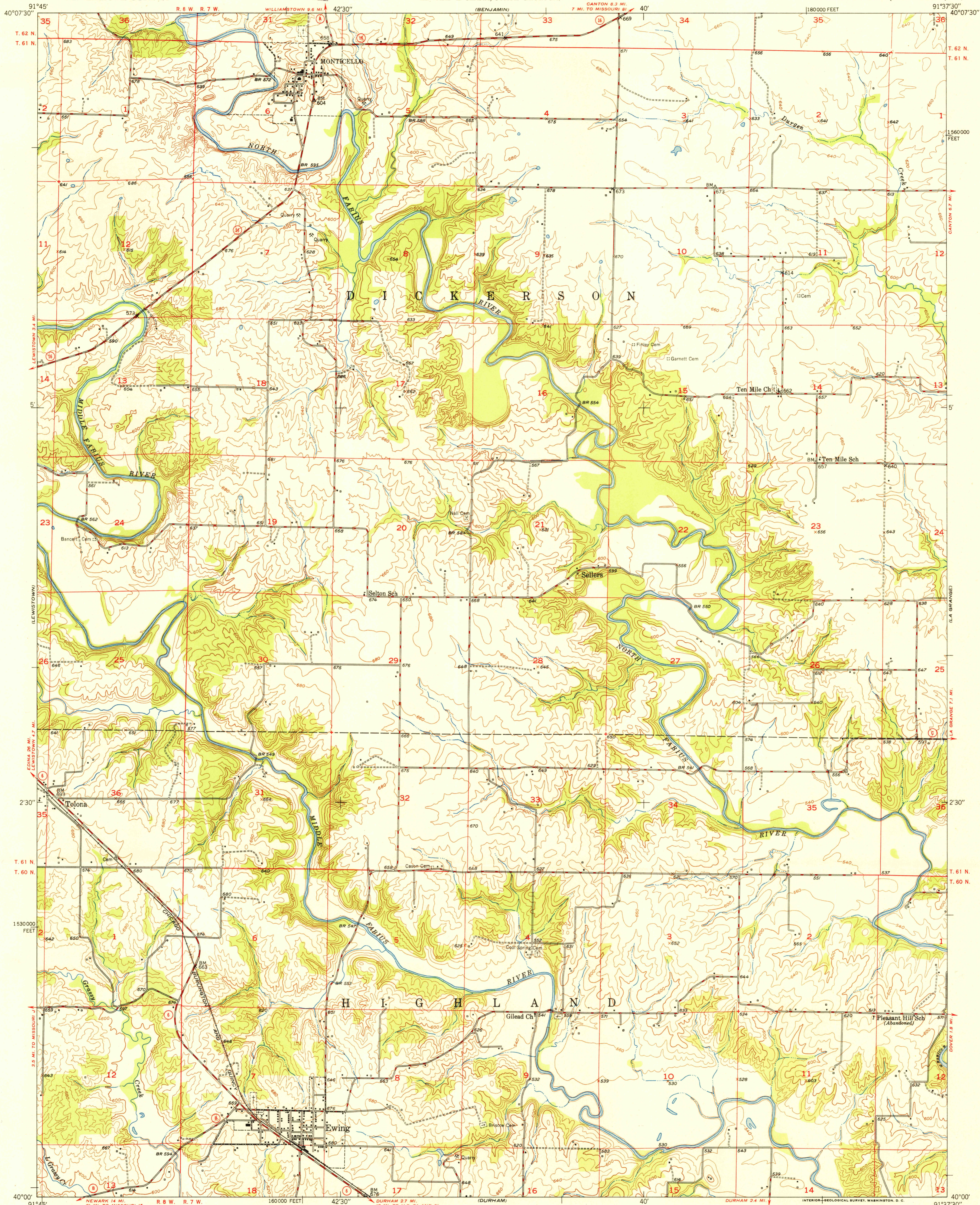
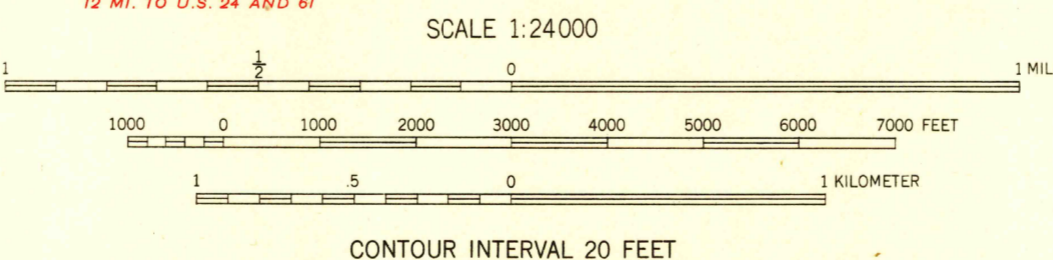


U.S.G.S.  
FILE COPY  
Impressions and Mappings



Mapped, edited, and published by the Geological Survey  
Control by USGS and USC&GS  
Topography from aerial photographs by multiplex methods  
Aerial photographs taken 1947. Field check 1950  
Polyconic projection. 1927 North American datum  
10,000-foot grid based on Missouri coordinate system,  
east zone



USGS  
Historical File  
Topographic Division

ROAD CLASSIFICATION  
HEAVY-DUTY ALL WEATHER ROADS DRY WEATHER ROADS  
Medium-duty 4 LANE IS LANE Improved dirt  
Loose-surface, graded, or narrow hard-surface  
U. S. Route State Route

THIS MAP COMPLIES WITH NATIONAL MAP ACCURACY STANDARDS  
FOR SALE BY U. S. GEOLOGICAL SURVEY, FEDERAL CENTER, DENVER, COLORADO OR WASHINGTON 25, D. C.  
AND BY THE MISSOURI GEOLOGICAL SURVEY, ROLLA, MISSOURI  
A FOLDER DESCRIBING TOPOGRAPHIC MAPS AND SYMBOLS IS AVAILABLE ON REQUEST

U.S.G.S.  
FILE COPY  
Impressions and Mappings

MONTECELLO, MO.  
N4000-W9137.5/7.5  
EDITION OF 1951