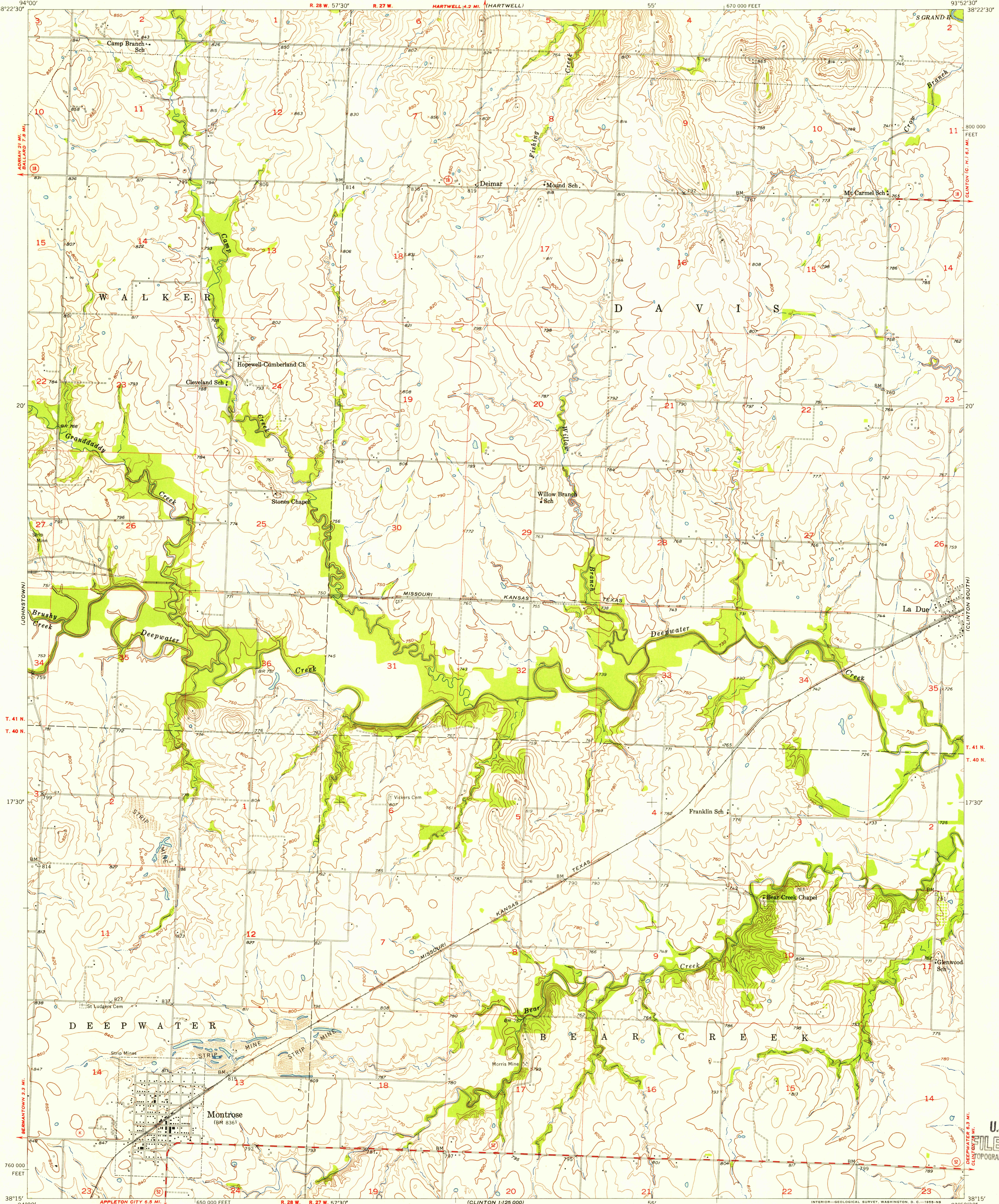


U.S.G.S.
FILE COPY
TOPOGRAPHIC DIVISION

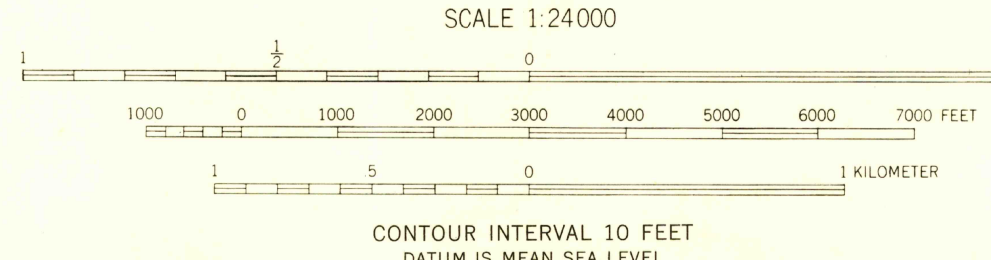
UNITED STATES
DEPARTMENT OF THE INTERIOR
GEOLOGICAL SURVEY

MONTROSE QUADRANGLE
MISSOURI-HENRY CO.
7.5 MINUTE SERIES (TOPOGRAPHIC)



Mapped, edited, and published by the Geological Survey as part of the Department of the Interior program for the development of the Missouri River Basin Control by USGS and USC&GS
Topography from aerial photographs by Kelsh plotter
Aerial photographs taken 1951. Field check 1953
Polyconic projection. 1927 North American datum
10,000-foot grid based on Missouri coordinate system, west zone

TRUE NORTH
MAGNETIC NORTH
APPROXIMATE MEAN DECLINATION, 1953



USGS
Historical File
Topographic Division

ROAD CLASSIFICATION
Heavy-duty 4 LANE 1 LANE Light-duty
Medium-duty 4 LANE 1 LANE Unimproved dirt
U. S. Route State Route



MONTROSE, MO.
N3815-W9352.5/7.5

THIS MAP COMPLIES WITH NATIONAL MAP ACCURACY STANDARDS
FOR SALE BY U. S. GEOLOGICAL SURVEY, FEDERAL CENTER, DENVER, COLORADO OR WASHINGTON 25, D. C.
AND BY THE MISSOURI GEOLOGICAL SURVEY, ROLLA, MISSOURI
A FOLDER DESCRIBING TOPOGRAPHIC MAPS AND SYMBOLS IS AVAILABLE ON REQUEST