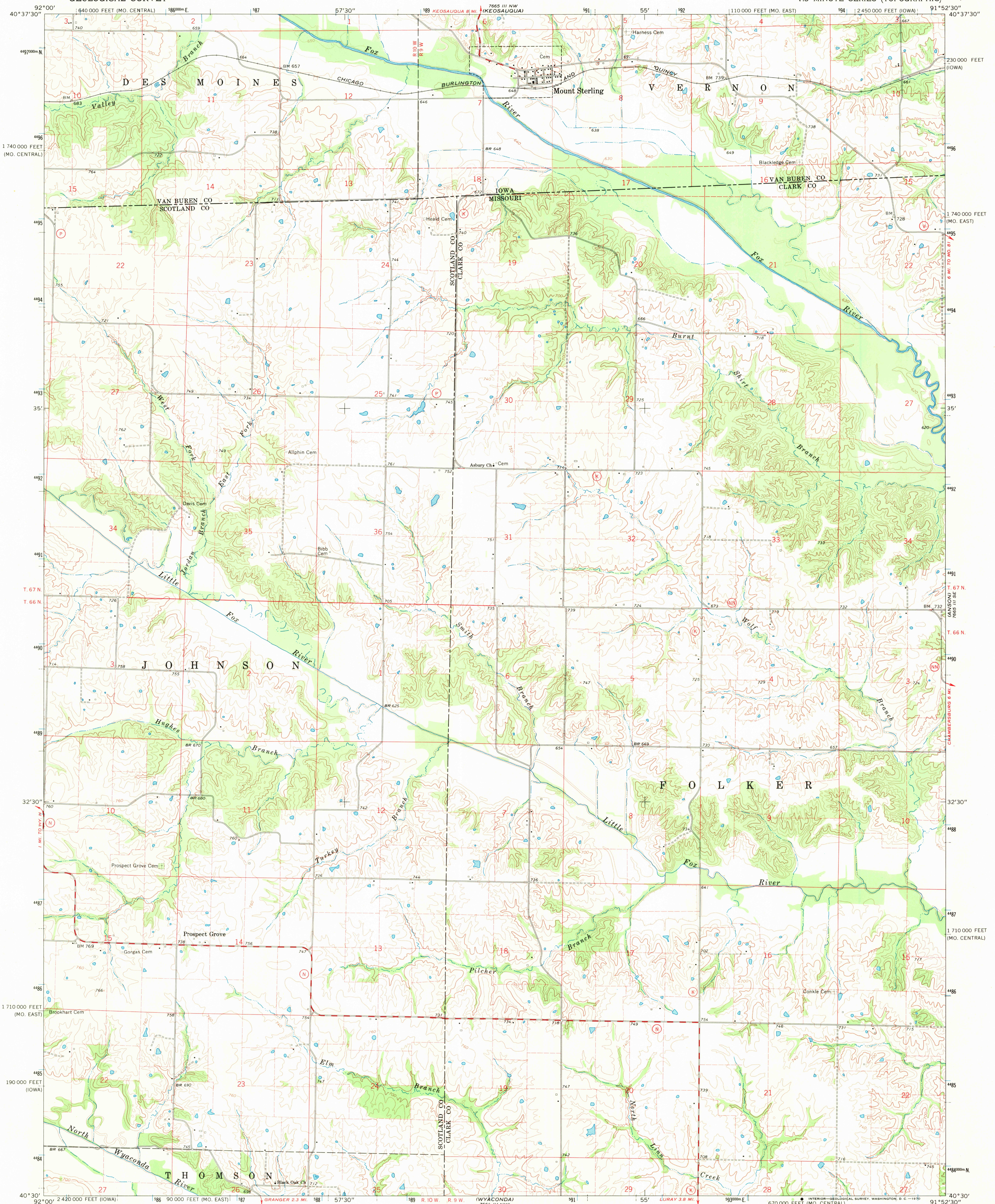


UNITED STATES  
DEPARTMENT OF THE INTERIOR  
GEOLOGICAL SURVEY

MOUNT STERLING QUADRANGLE  
MISSOURI-IOWA  
7.5 MINUTE SERIES (TOPOGRAPHIC)



Maped, edited, and published by the Geological Survey  
Control by USGS and USC&GS  
Topography by photogrammetric methods from aerial  
photographs taken 1965. Field checked 1968  
Polyconic projection. 1927 North American datum  
10,000-foot grids based on Missouri coordinate system, east and  
central zones, and Iowa coordinate system, south zone  
1000-meter Universal Transverse Mercator grid ticks,  
zone 15, shown in blue  
Fine red dashed lines indicate selected fence and field lines where  
generally visible on aerial photographs. This information is unchecked

UTM GRID and 1968 MAGNETIC NORTH  
DECLINATION AT CENTER OF SHEET

SCALE 1:24,000  
CONTOUR INTERVAL 20 FEET  
DOTTED LINES REPRESENT 10-FOOT CONTOURS  
DATUM IS MEAN SEA LEVEL

THIS MAP COMPLIES WITH NATIONAL MAP ACCURACY STANDARDS  
FOR SALE BY U.S. GEOLOGICAL SURVEY, DENVER, COLORADO 80225, OR WASHINGTON, D.C. 20242,  
MISSOURI GEOLOGICAL SURVEY, ROLLA, MISSOURI 65401,  
AND IOWA GEOLOGICAL SURVEY, IOWA CITY, IOWA 52240  
A FOLDER DESCRIBING TOPOGRAPHIC MAPS AND SYMBOLS IS AVAILABLE ON REQUEST

USGS  
Historical File  
Topographic Division



ROAD CLASSIFICATION  
Secondary highway, all weather, light-duty road, all weather,  
hard surface  
Unimproved road, fair or dry  
weather  
State Route

U.S.G.S. MOUNT STERLING, MO.-IOWA  
N4030-W9152.5/7.5

FILE COPY  
TOPOGRAPHIC DIVISION

1968  
AMS 7665 III SW-SERIES V879

OCT 23 1970