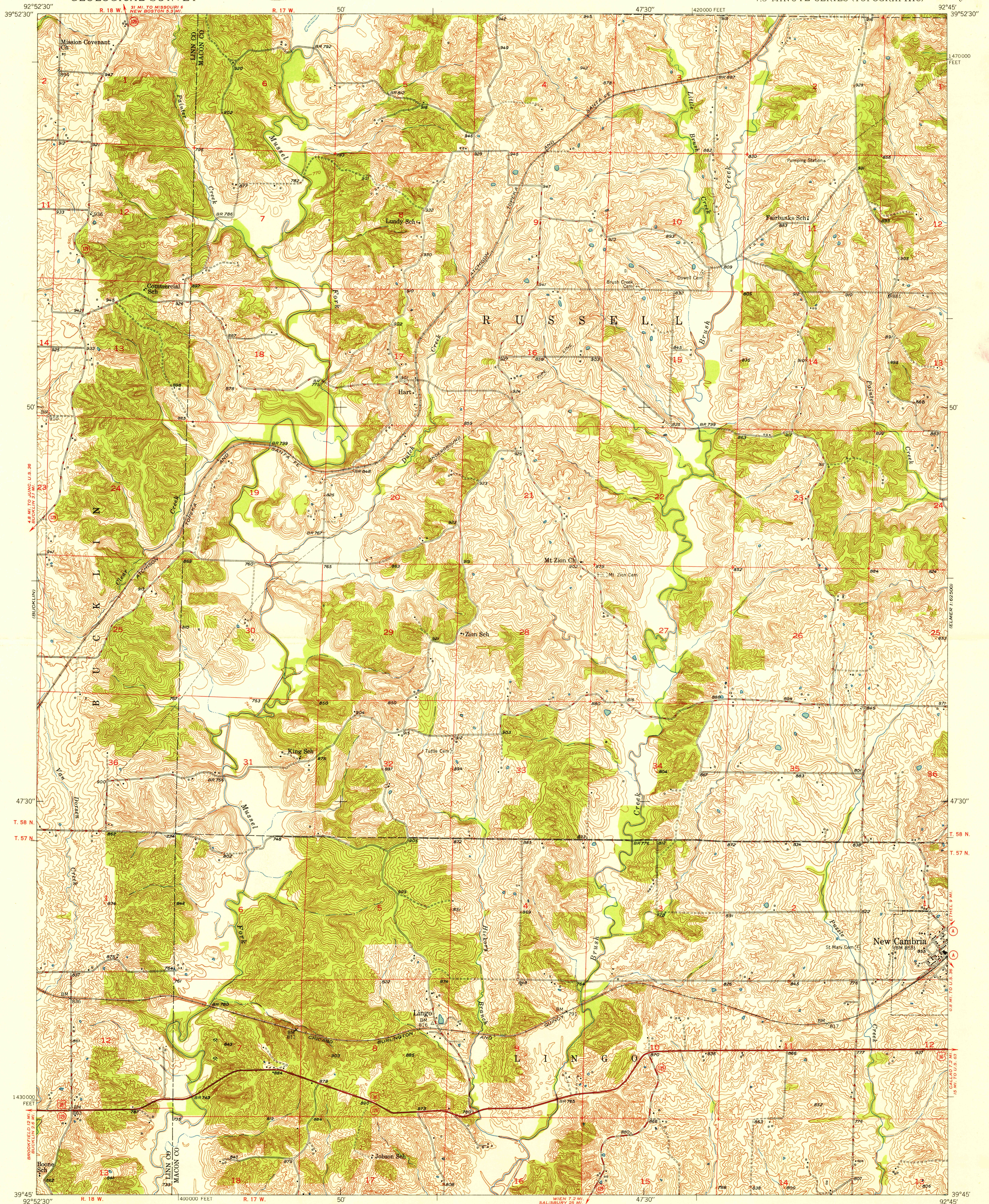


UNITED STATES
DEPARTMENT OF THE INTERIOR
GEOLOGICAL SURVEY

U. S. G. S.
FILE COPY
Inspection and Editing.

NEW CAMBRIA WEST QUADRANGLE
MISSOURI
7.5 MINUTE SERIES (TOPOGRAPHIC)



Mapped, edited, and published by the Geological Survey as part of the Department of the Interior program for the development of the Missouri River Basin.

Control by USGS and USC&GS

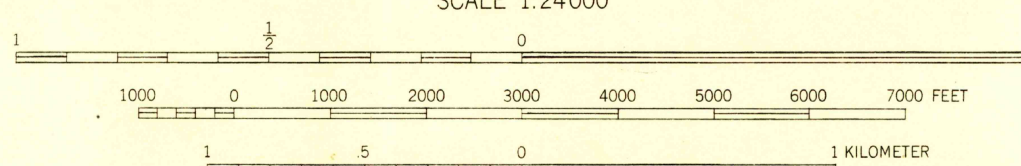
Culture and drainage in part compiled from aerial photographs taken 1939

Topography by plane-table methods 1949

Polyconic projection. 1927 North American datum

10,000-foot grid based on Missouri coordinate system, central zone

APPROXIMATE MEAN DECLINATION, 1949



CONTOUR INTERVAL 10 FEET
DATUM IS MEAN SEA LEVEL

THIS MAP COMPLIES WITH NATIONAL MAP ACCURACY STANDARDS
FOR SALE BY U. S. GEOLOGICAL SURVEY, FEDERAL CENTER, DENVER, COLORADO OR WASHINGTON 25, D. C.
A FOLDER DESCRIBING TOPOGRAPHIC MAPS AND SYMBOLS IS AVAILABLE ON REQUEST

ROAD CLASSIFICATION

HARD-SURFACE ALL WEATHER ROADS DRY WEATHER ROADS

Heavy-duty — 4 LANE 16 LANE Improved dirt —

Medium-duty — 4 LANE 16 LANE Unimproved dirt —

Loose-surface, graded, or narrow hard-surface —

U. S. Route State Route

NEW CAMBRIA WEST, MO.
N3945-W9245/7.5

EDITION OF 1950

U. S. G. S.
FILE COPY
Inspection and Editing.

SEP 8 1950 2075