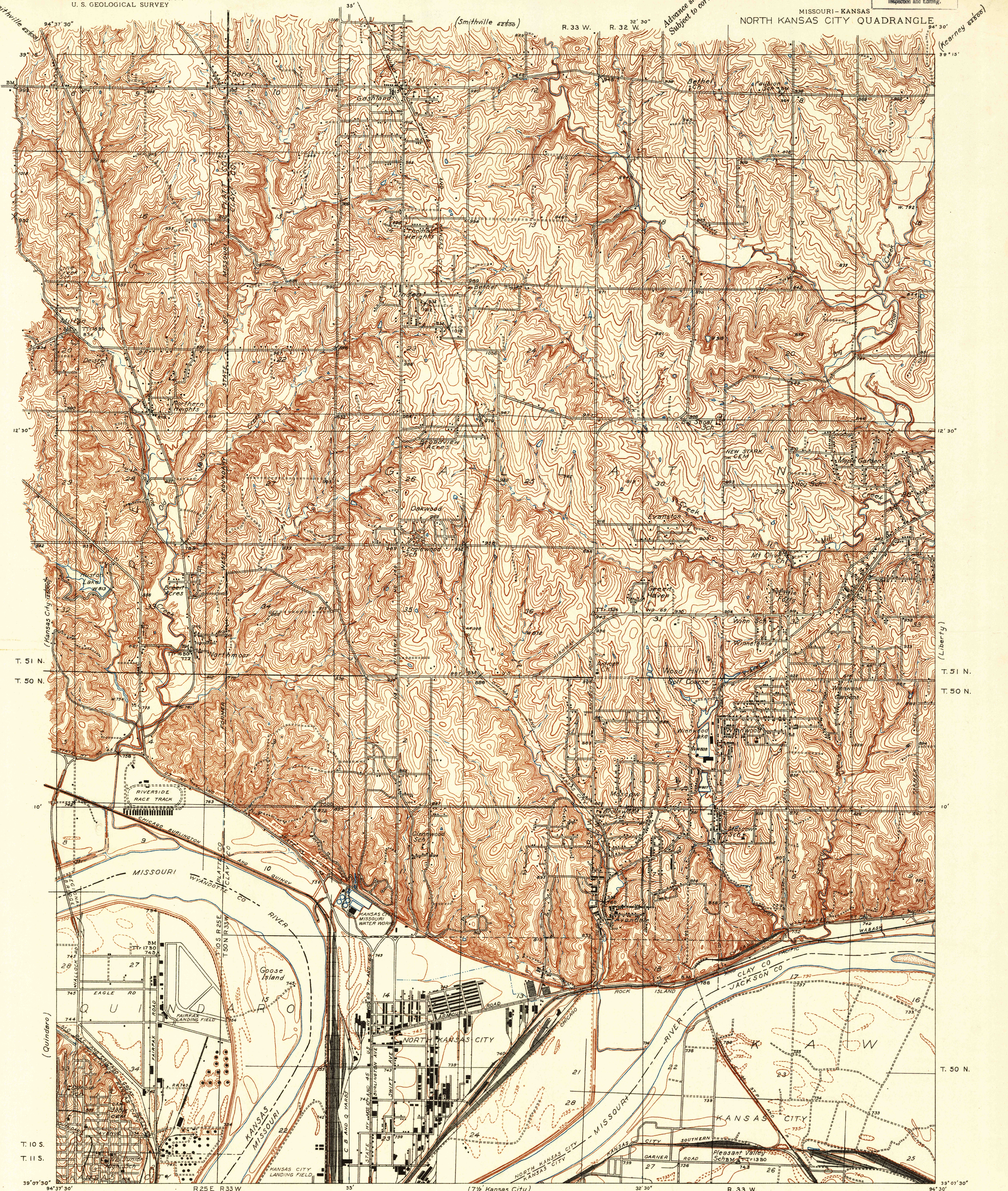


Advance sheet.
Subject to correction.

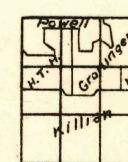


Glenn S. Smith, Division Engineer
Topography by J.G. Groninger,
C.A. Killian, H.T. Heimberger
and H.T. Powell
Control by U.S. Geological Survey,
U.S. Coast and Geodetic Survey,
and Missouri River Commission
Surveyed in 1934-35

TRUE NORTH
MAGNETIC NORTH
APPROXIMATE MEAN
DECLINATION, 1985

Scale 24,000
0 5,000 10,000 Feet

Contour interval 10 feet
5 foot contours added in dashed lines
Datum is mean sea level



USGS
Historical File
Topographic Division

NORTH KANSAS CITY, MO-KANS.