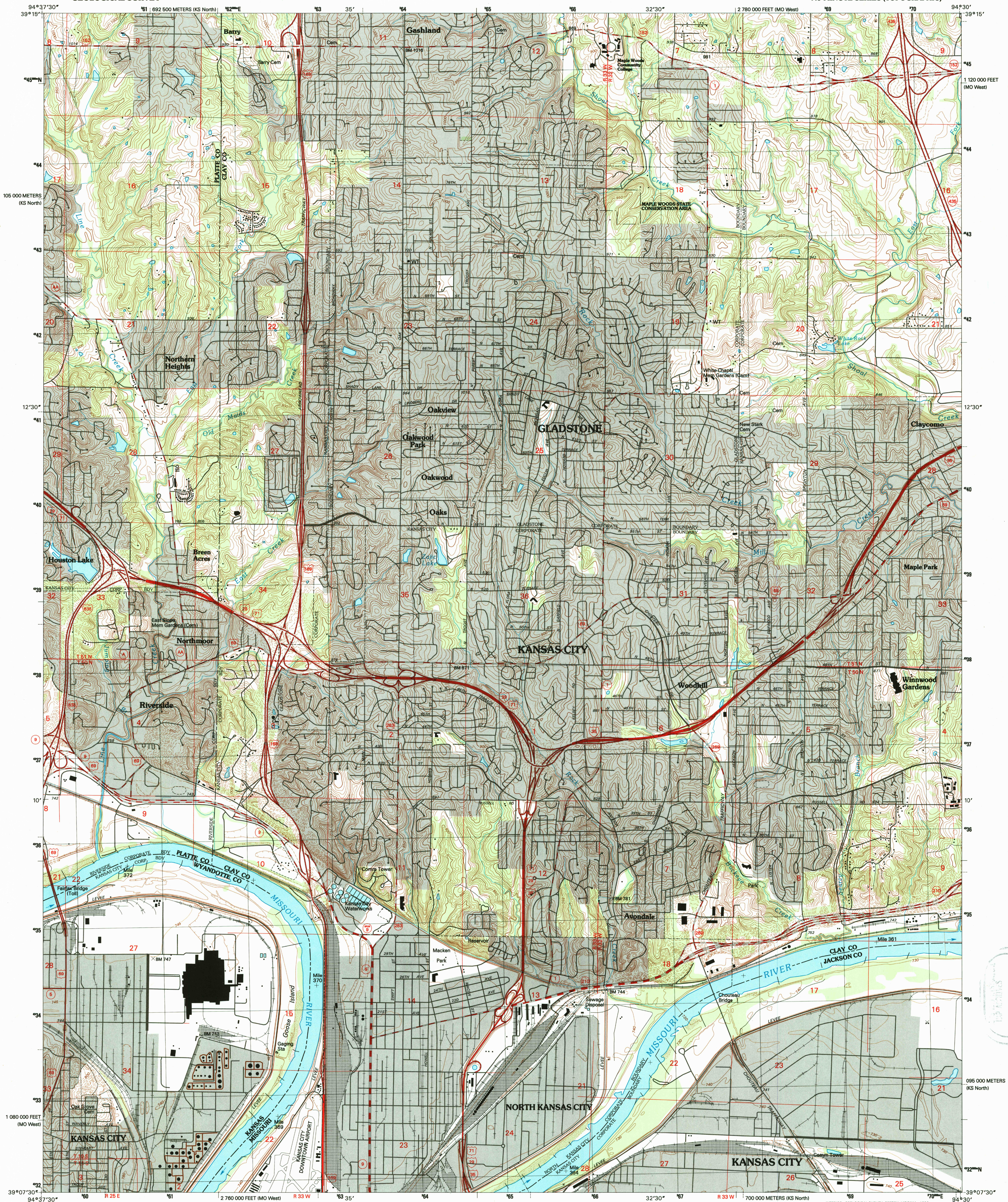


UNITED STATES
DEPARTMENT OF THE INTERIOR
GEOLOGICAL SURVEY

NORTH KANSAS CITY QUADRANGLE
MISSOURI-KANSAS
7.5-MINUTE SERIES (TOPOGRAPHIC)



Produced by the United States Geological Survey
Planimetry by photogrammetric methods from imagery dated 1947
Topography by planimetric surveys 1934-55. Revised from imagery
dated 1963. Field checked 1964. Revised from imagery dated
1950. PLSS and survey control current as of 1964
Map edited 1996. Contours not revised. Contours that conflict
with revised planimetry are dashed
North American Datum of 1983 (NAD 83). Projection and
1 000-meter grid: Universal Transverse Mercator, zone 15
10 000-foot ticks: Missouri Coordinate System of 1983 (west zone)
2 500-meter ticks: Kansas Coordinate System of 1983 (north zone)
North American Datum of 1927 (NAD 27) is shown by dashed
corner ticks. The values of the shift between NAD 83 and NAD 27
for 7.5-minute intersections are obtainable from National Geodetic
Survey NADCON software
There may be private holdings within the boundaries of
the National or State reservations shown on this map

UTM GRID AND 1996 MAGNETIC NORTH
DECLINATION AT CENTER OF SHEET

SCALE 1:24 000
CONTOUR INTERVAL 10 FEET
SUPPLEMENTARY CONTOUR INTERVAL 5 FEET
NATIONAL GEODETIC VERTICAL DATUM OF 1929
THIS MAP COMPLETES WITH NATIONAL MAP ACCURACY STANDARDS
FOR SALE BY U.S. GEOLOGICAL SURVEY, DENVER, COLORADO 80225, OR RESTON, VIRGINIA 22092
DIVISION OF GEOLOGY AND LAND SURVEY
MISSOURI DEPARTMENT OF NATURAL RESOURCES, ROLLA, MISSOURI 65401
AND KANSAS GEOLOGICAL SURVEY, LAWRENCE, KANSAS 66044
A FOLDER DESCRIBING TOPOGRAPHIC MAPS AND SYMBOLS IS AVAILABLE ON REQUEST



1	2	3	1 Fernside
4	5	2 Maple	3 Kearney SW
6	7	8	4 Parkville
			5 Liberty
			6 Shawnee
			7 Kansas City
			8 Independence

ROAD CLASSIFICATION
Primary highway
Secondary highway
Light-duty road, hard or
Improved surface
Unimproved road
Interstate Route
U.S. Route
State Route

NORTH KANSAS CITY, MO-KS
39094-B5-TF-024

1990

DMA 7062 II NE-SERIES V879

100% REPRODUCIBLE
JAN 9 1997
REC'D FILE COPY

ISBN 0-607-65707-2
9 780607 657078