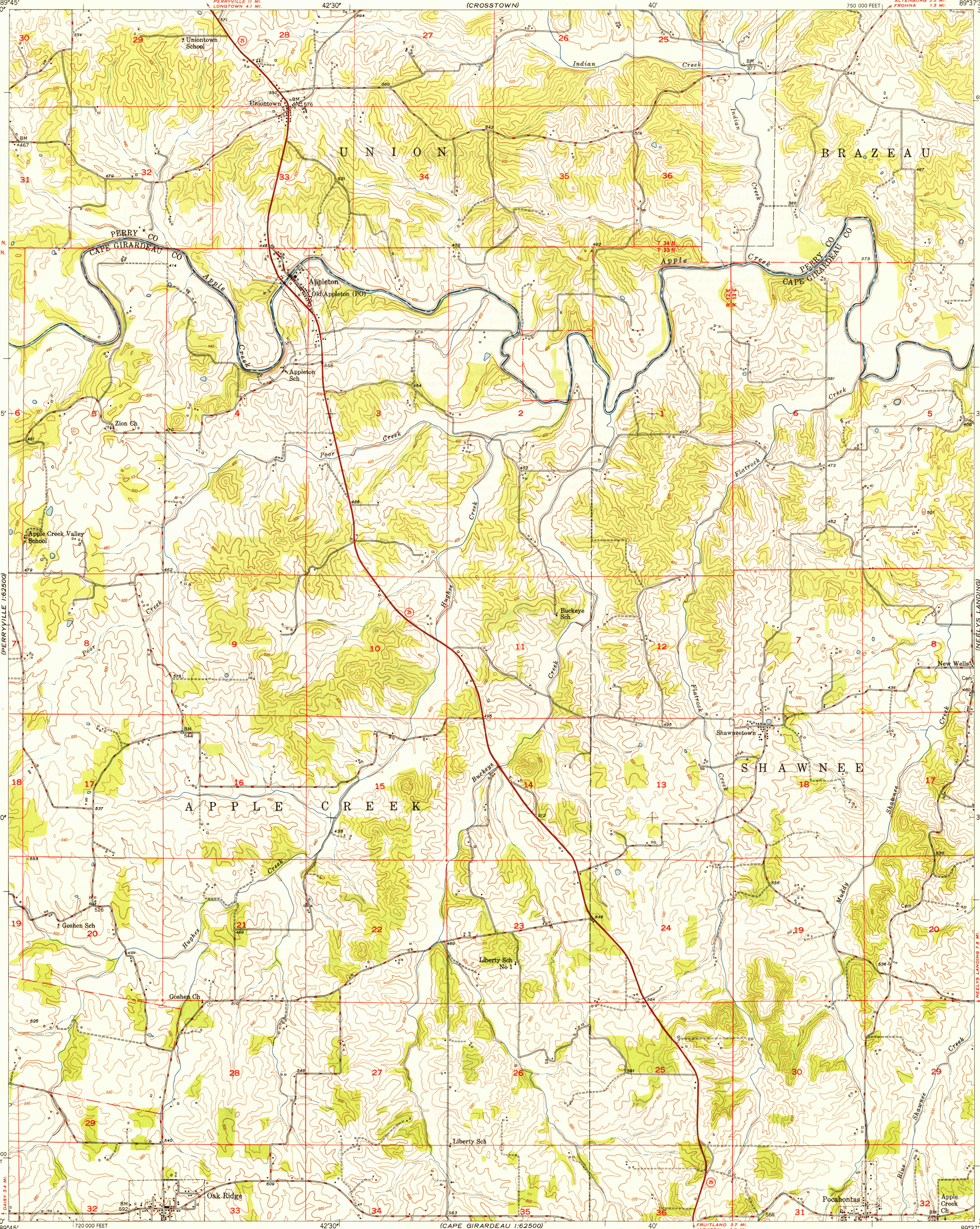


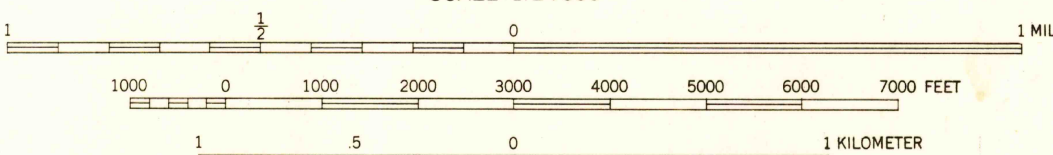
U. S. G. S.
FILE COPY
Inspection and Editing

U. S. G. S.
FILE COPY
Inspection and Editing



Mapped, edited, and published by the Geological Survey
Control by USC&GS and USGS
Topography from aerial photographs by multiplex methods
and by plane-table surveys 1947
Aerial photographs taken 1946
Polyconic projection, 1927 North American Datum
10,000 foot grid based on Missouri Coordinate System,
East Zone

TRUE NORTH
MAGNETIC NORTH
APPROXIMATE MEAN
DECLINATION, 1947



CONTOUR INTERVAL 20 FEET
DATUM IS MEAN SEA LEVEL

THIS MAP COMPLIES WITH NATIONAL MAP ACCURACY STANDARDS

FOR SALE BY U. S. GEOLOGICAL SURVEY, WASHINGTON 25, D. C.

USGS
Historical File
Topographic Division
WOODLAND

Woods—Brushwood
Orchard

ROAD CLASSIFICATION
HARD-SURFACE ALL WEATHER ROADS DRY WEATHER ROADS
Heavy-duty 4 LANE LANE Improved dirt
Medium-duty 4 LANE LANE Unimproved dirt
Loose-surface or narrow hard-surface

U. S. G. S.
FILE COPY
Inspection and Editing

OAK RIDGE, MO.
N 3730-W 8937.5/7.5

PRINTED 1948
SEP 27 1948