

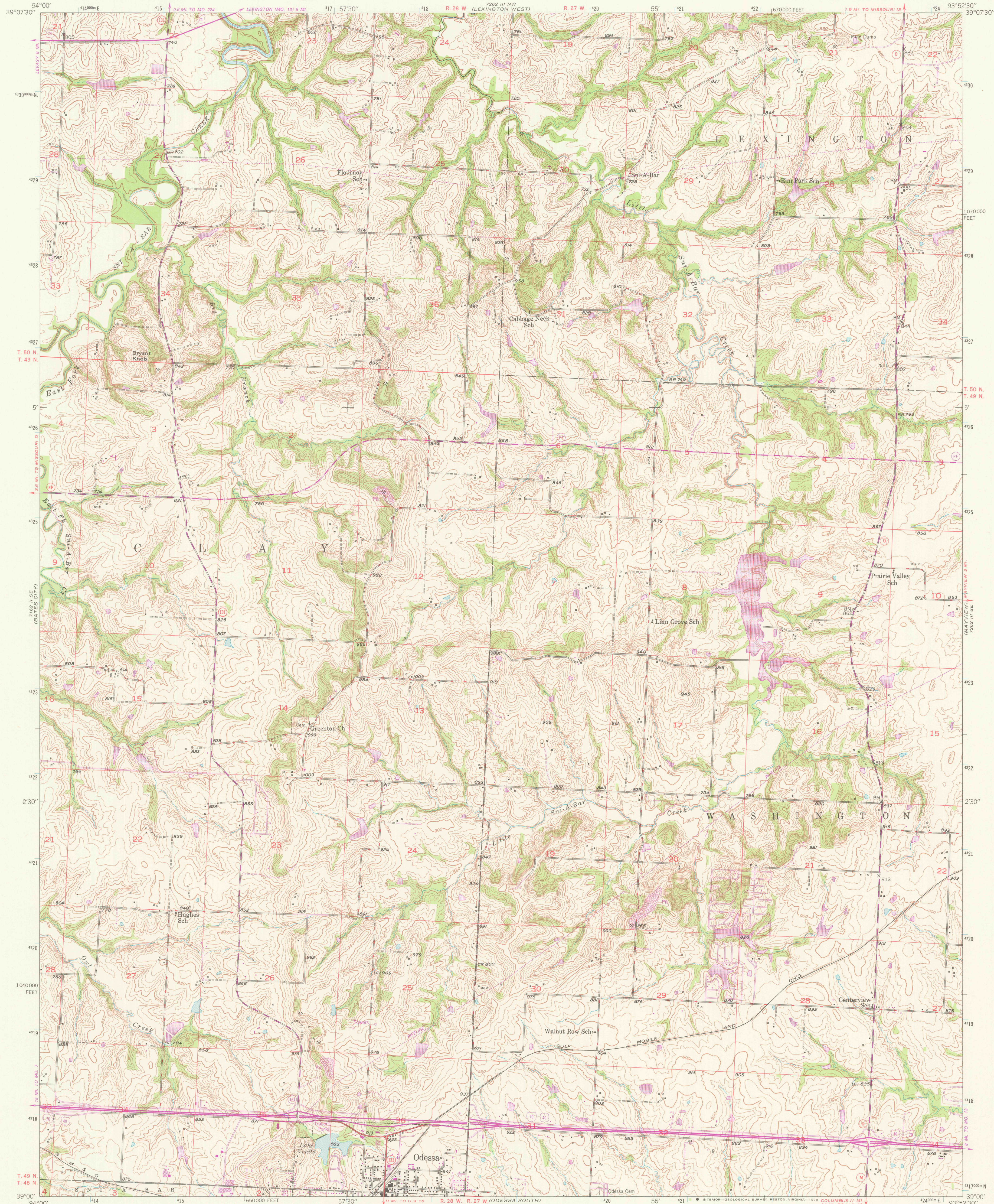
7 59 10 N
7 59 10 E

UNITED STATES
DEPARTMENT OF THE INTERIOR
GEOLOGICAL SURVEY



ODESSA NORTH QUADRANGLE
MISSOURI-LAFAYETTE CO
7.5 MINUTE SERIES (TOPOGRAPHIC)

7 59 10 N
7 59 10 E



Maped, edited, and published by the Geological Survey

Control by USGS and USC&GS

Topography from aerial photographs by multiplex methods

Aerial photographs taken 1947. Field check 1949

Polyconic projection. 1927 North American datum

10,000-foot grid based on Missouri coordinate system,

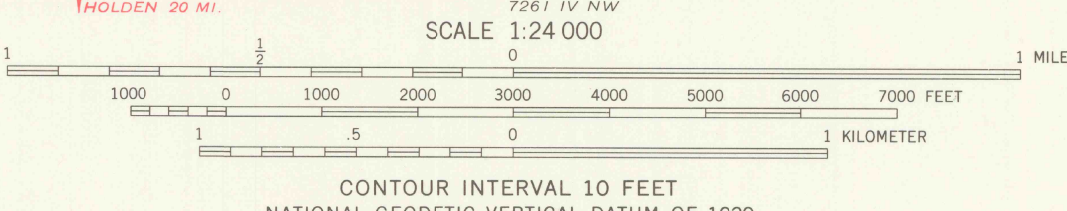
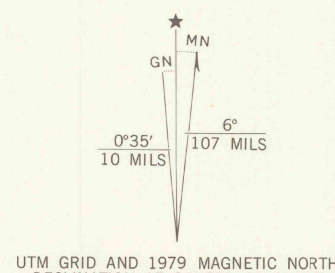
west zone

1000-meter Universal Transverse Mercator grid ticks,

zone 15, shown in blue

Revisions shown in purple compiled from aerial photographs taken

1977. Map edited 1979. This information not field checked



THIS MAP COMPLIES WITH NATIONAL MAP ACCURACY STANDARDS
FOR SALE BY U.S. GEOLOGICAL SURVEY, DENVER, COLORADO 80225, OR RESTON, VIRGINIA 22092
AND BY THE DIVISION OF RESEARCH AND TECHNICAL INFORMATION
MISSOURI DEPARTMENT OF NATURAL RESOURCES, ROLLA, MISSOURI 65401
A FOLDER DESCRIBING TOPOGRAPHIC MAPS AND SYMBOLS IS AVAILABLE ON REQUEST



ROAD CLASSIFICATION	
HARD SURFACE ALL WEATHER ROADS	DRY WEATHER ROADS
Heavy-duty	Improved dirt
Medium-duty	Unimproved dirt
Loose surface, graded, or narrow hard surface	
U. S. Route	State Route
Interstate Route	

ODESSA NORTH, MO
N3900-W9352.5/7.5

1949
PHOTOREVISED 1978
AMS 7262 III SW-SERIES 7879

