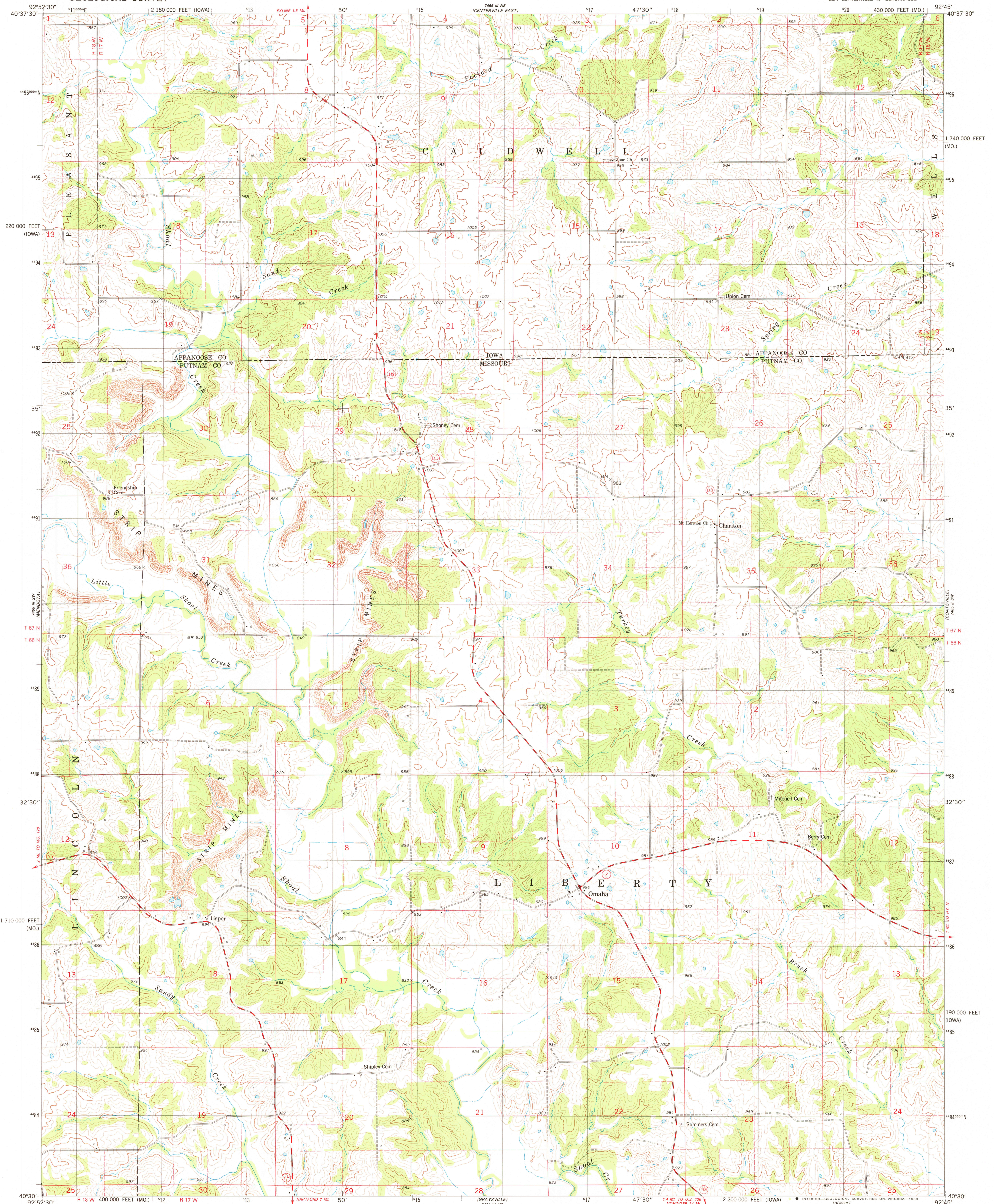


UNITED STATES
DEPARTMENT OF THE INTERIOR
GEOLOGICAL SURVEY

OMAHA QUADRANGLE
MISSOURI-IOWA
7.5 MINUTE SERIES (TOPOGRAPHIC)
SE/4 CENTERVILLE 15' QUADRANGLE



Mapped, edited, and published by the Geological Survey
Control by USGS and NOS/NOAA

Topography by photogrammetric methods from aerial photographs
taken 1974. Field checked 1976. Map edited 1980

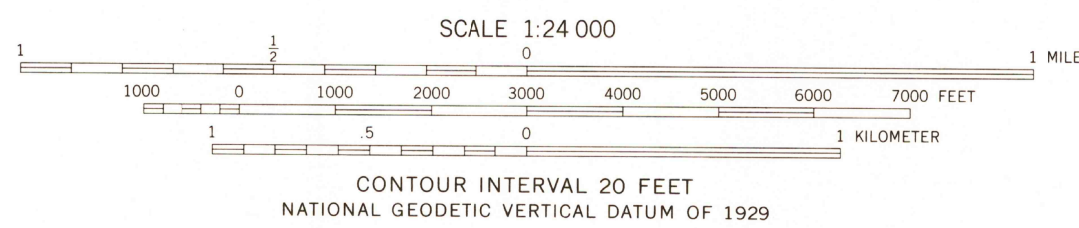
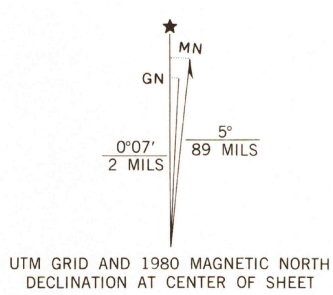
Projection: Missouri coordinate system, central zone
(transverse Mercator)

10,000-foot grid ticks based on Missouri coordinate
system, central zone and Iowa coordinate system, south zone

1000-meter Universal Transverse Mercator grid, zone 15
1927 North American Datum

To place on the predicted North American Datum 1983
move the projection lines 2 meters north and
16 meters east as shown by dashed corner ticks

Fine red dashed lines indicate selected fence and field lines where
generally visible on aerial photographs. This information is unchecked



THIS MAP COMPLIES WITH NATIONAL MAP ACCURACY STANDARDS
FOR SALE BY U. S. GEOLOGICAL SURVEY, DENVER, COLORADO 80225, OR RESTON, VIRGINIA 22092,
AND THE DIVISION OF GEOLOGY AND LAND SURVEY
MISSOURI DEPARTMENT OF NATURAL RESOURCES, ROLLA, MISSOURI 65401
AND IOWA GEOLOGICAL SURVEY, IOWA CITY, IOWA 52240
A FOLDER DESCRIBING TOPOGRAPHIC MAPS AND SYMBOLS IS AVAILABLE ON REQUEST



ROAD CLASSIFICATION
Primary highway, hard surface
Secondary highway, hard surface
Unimproved road
Interstate Route
U. S. Route
State Route

USGS
Historical File
Topographic Division

OMAHA, MO.-IOWA
SE/4 CENTERVILLE 15' QUADRANGLE
N4030-W9245/7.5

1980
DMA 7465 III SE-SERIES V879

JUN - 5 1980

2000