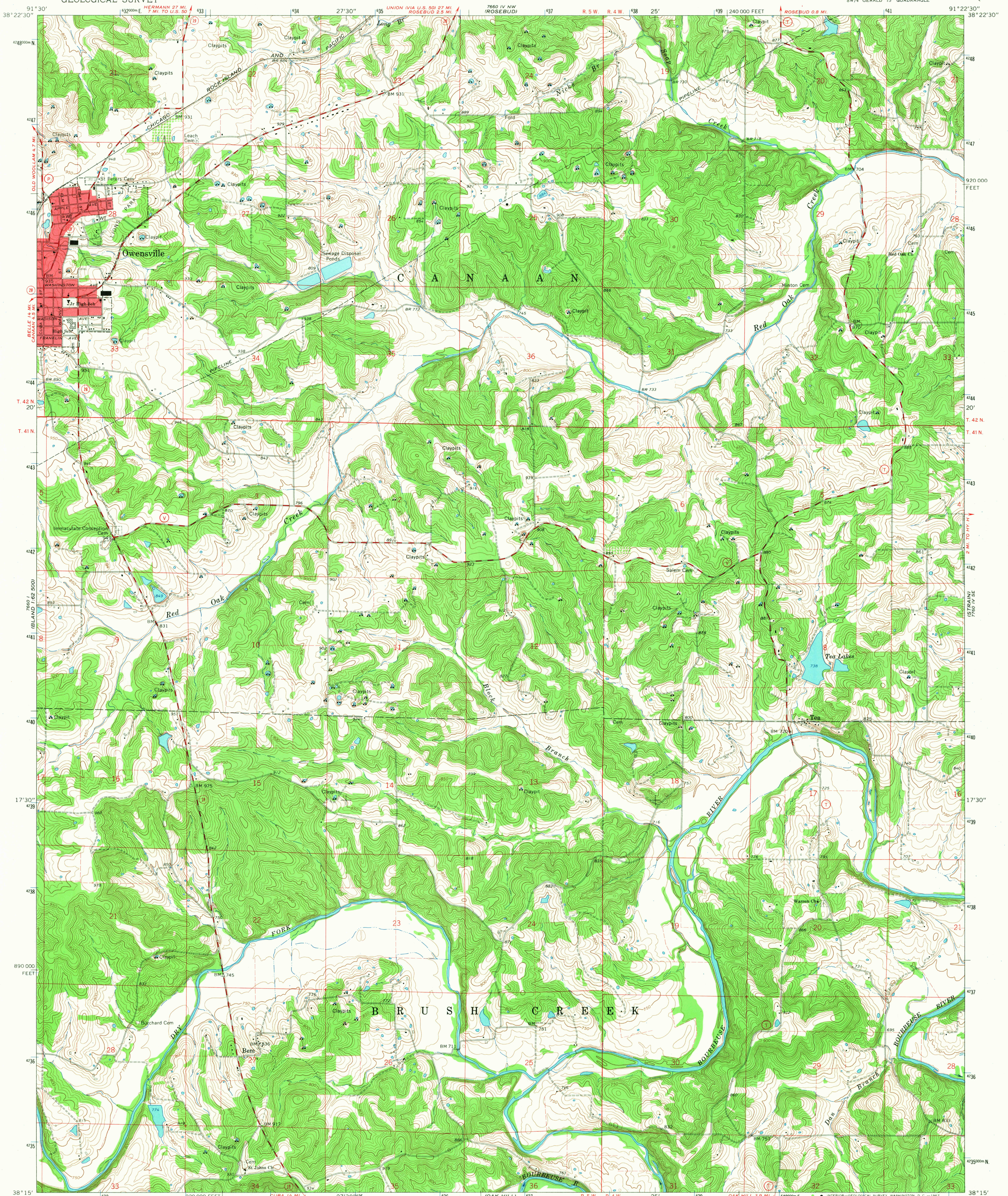
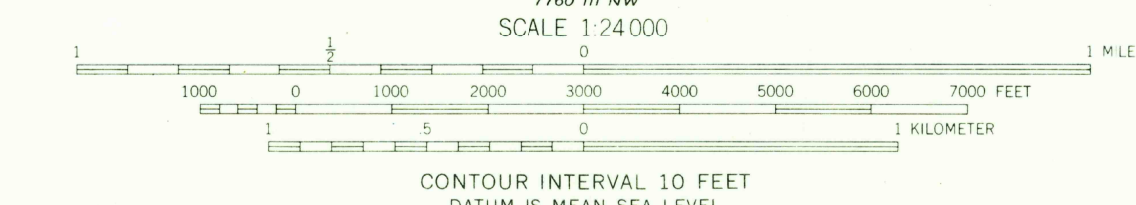
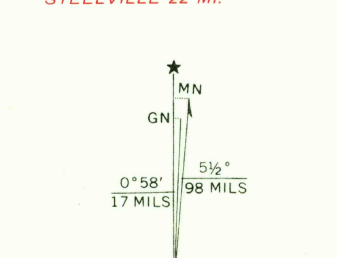


UNITED STATES
DEPARTMENT OF THE INTERIOR
GEOLOGICAL SURVEY

OWENSVILLE EAST QUADRANGLE
MISSOURI—GASCONADE CO.
7.5 MINUTE SERIES (TOPOGRAPHIC)
SW 1/4 GERALD 15 QUADRANGLE



Mapped, edited, and published by the Geological Survey
Control by USGS and USC&GS
Topography by photogrammetric methods from aerial
photographs taken 1964. Field checked 1966
Polyconic projection. 1927 North American datum
10,000-foot grid based on Missouri coordinate system, east zone
1000-meter Universal Transverse Mercator grid ticks,
zone 15, shown in blue
Red tint indicates area in which only landmark buildings are shown
Fine red dashed lines indicate selected fence and field lines where
generally visible on aerial photographs. This information is unchecked



USGS
Historical File
Topographic Division

ROAD CLASSIFICATION
Medium-duty ——— Light-duty ———
Unimproved dirt ———
State Route



U.S.G.S.
FILE COPY
TOPOGRAPHIC DIVISION

OWENSVILLE EAST, MO.
SW 1/4 GERALD 15 QUADRANGLE
N 3815—W 9122.5/7.5
1966

AMS 7760 IV SW—SERIES V879

3135
AUG 7 1967