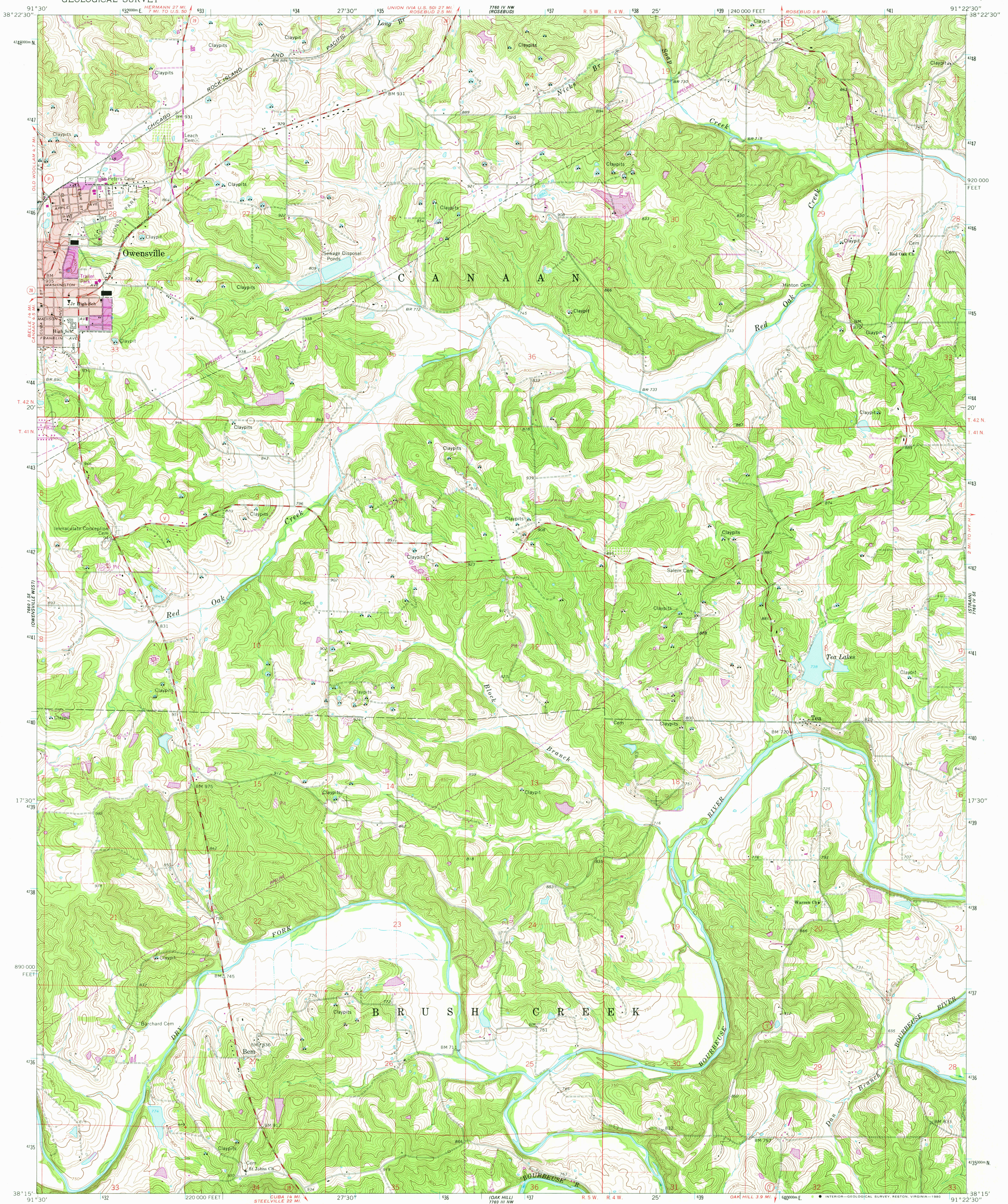
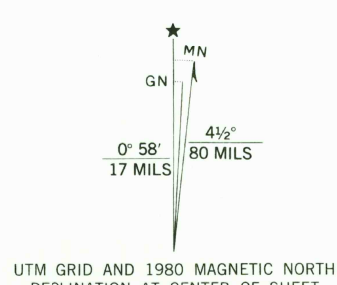


UNITED STATES  
DEPARTMENT OF THE INTERIOR  
GEOLOGICAL SURVEY

OWENSVILLE EAST QUADRANGLE  
MISSOURI—GASCONADE CO.  
7.5 MINUTE SERIES (TOPOGRAPHIC)



Mapped, edited, and published by the Geological Survey  
Control by USGS and USC&GS  
Topography by photogrammetric methods from aerial  
photographs taken 1964. Field checked 1966  
Polyconic projection. 1927 North American datum  
10,000-foot grid based on Missouri coordinate system, east zone  
1000-meter Universal Transverse Mercator grid ticks,  
zone 15, shown in blue  
Red tint indicates area in which only landmark buildings are shown  
Fine red dashed lines indicate selected fence and field lines where  
generally visible on aerial photographs. This information is unchecked  
To place on the predicted North American Datum 1983  
move the projection lines 2 meters south and  
12 meters east as shown by dashed corner ticks



SCALE 1:24 000  
CONTOUR INTERVAL 10 FEET  
NATIONAL GEODETIC VERTICAL DATUM OF 1929

THIS MAP COMPLIES WITH NATIONAL MAP ACCURACY STANDARDS  
FOR SALE BY U. S. GEOLOGICAL SURVEY, DENVER, COLORADO 80225, OR RESTON, VIRGINIA 22092,  
AND THE DIVISION OF GEOLOGY AND LAND SURVEY  
MISSOURI DEPARTMENT OF NATURAL RESOURCES, ROLLA, MISSOURI 65401  
A FOLDER DESCRIBING TOPOGRAPHIC MAPS AND SYMBOLS IS AVAILABLE ON REQUEST



USGS  
Historical File  
Topographic Division

Revisions shown in purple compiled from aerial  
photographs taken 1978. Map edited 1980  
This information not field checked  
Purple tint indicates extension of urban areas

ROAD CLASSIFICATION  
Medium-duty ——— Light-duty ———  
Unimproved dirt ———

State Route

OWENSVILLE EAST, MO.

N 3815—W 9122.5/7.5

1966  
PHOTOREVISED 1980  
DMA 7760 IV SW—SERIES V 879

JUN - 3 1980

1550