

U.S.G.S. FILE COPY Inspection and Editing

DEPARTMENT OF THE INTERIOR
U. S. GEOLOGICAL SURVEY

627-5-1-E/2-NE/4
STATE OF MISSOURI
BUREAU OF GEOLOGY AND MINES
H. A. BUEHLER, DIRECTOR AND STATE GEOLOGIST
(Manchester SE)

Advance sheet
Subject to correction

MISSOURI
PACIFIC QUADRANGLE
NE QUARTER
R 4 E R 5 E

(St. Louis 67-500)



(De Soto 725-500)

(De Soto 725-500)

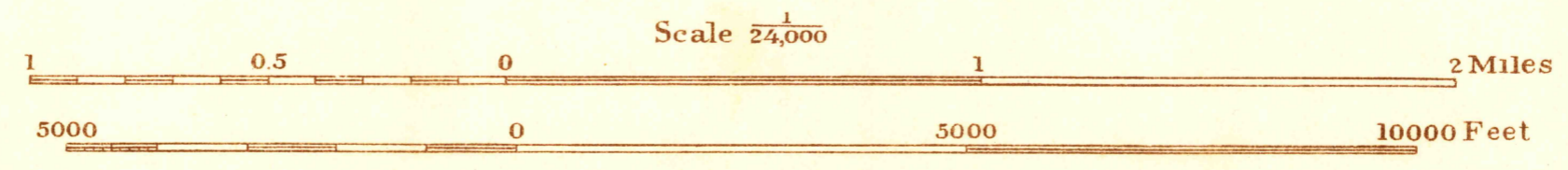
(De Soto 725-500)

(Winnemuck 67-500)

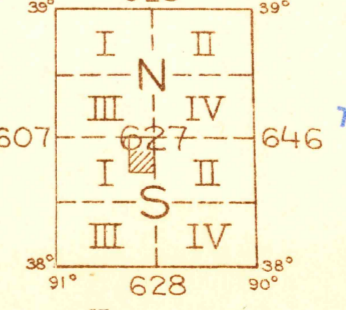
Glenn S. Smith, Division Engineer
Topography by M. J. Harden and E. J. Fennell
Control by U. S. Geological Survey and
U. S. Coast and Geodetic Survey
Surveyed in 1931

Fennell
Harden

TRUE NORTH
MAGNETIC NORTH
APPROXIMATE MEAN
DECLINATION, 1931



Contour interval 20 feet
10 foot contours added in dashed lines
Datum is mean sea level



USGS
Historical File
Topographic Division

PACIFIC NE, MO