

Advance sheet  
Subject to correction



U.S.G.S.  
FILE COPY  
TOPOGRAPHIC DIVISION

5 Miles

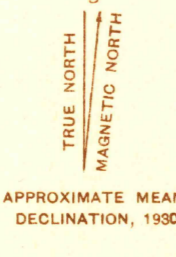
Hillsboro 1:62,500

Hillsboro 1:62,500

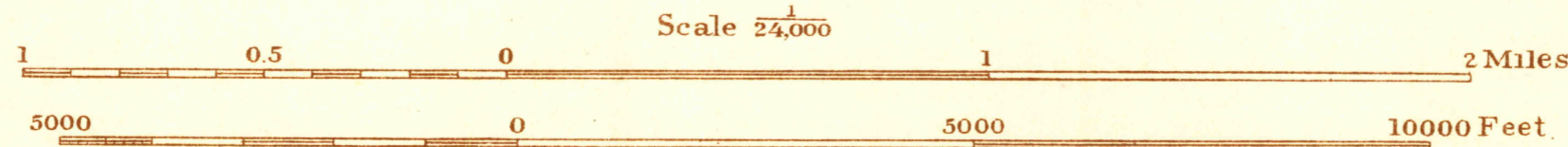
Hillsboro 1:62,500

U.S.G.S.  
FILE COPY  
TOPOGRAPHIC DIVISION

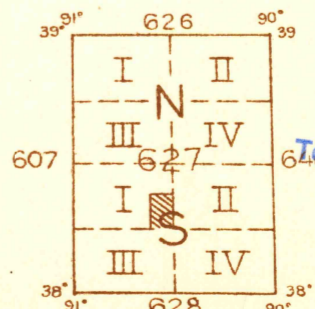
Glenn S. Smith Division Engineer  
Topography by S. T. Penick, T. F. Murphy, S. B. O'Hara,  
M. J. Harden, J. L. Buckmaster, and S. S. Evans  
Culture and drainage in part compiled from aerial photographs  
taken by Air Corps, U. S. Army  
Control by U. S. Geological Survey  
Surveyed in 1930



APPROXIMATE MEAN  
DECLINATION, 1930



Scale 24,000  
Contour interval 20 feet  
10 foot contours added in dashed lines  
Datum is mean sea level



Polyconic projection, North American datum  
5000 yard grid based upon U. S. zone system, C  
U.S.G.S.  
Historical File  
Topographic Division  
PACIFIC SE 1/4, MO.

Hillsboro 1:62,500  
(Crystal City)